



Boat seats

Seat pedestals

Tables

Deck equipment

Fittings

Anodes

and more

The best equipment for your boat!

- High quality and reliability
- Complementary to the VETUS systems
- 3 Year warranty

With the V-Quipment line, VETUS offers a number of products which makes its range of boat equipment more complete. VETUS focuses on creating boat systems such as waste water, exhaust, manoeuvring and drinking water systems. For anchor windlasses, custom made windows, VETUS carries the brands Maxwell and Marex. In addition to these brands there is the V-Quipment program. A range of carefully selected products that is needed by all boat owners/builders and that is above all affordable. VETUS does not develop these products - which is the case for most of the others systems - but purchases and markets them under the brand name V-Quipment. All V-Quipment products meet VETUS high quality requirements.

For all products from the V-Quipment range VETUS standard 3 year warranty is valid.

The V-Quipment range is divided into a number of different themes.

Comfort

Within this section you will find an attractive range of boat seats and tables. These comfortable seats are upholstered in marine grade materials which are designed to withstand all weathers. To complement these, we also supply a choice of seat and table pedestals and a range of cockpit tables.

Deck equipment

Here you will find a series of stainless steel deck fittings, as well as horns, boarding ladders, stanchions, and a range of rubbing strakes.

Locks and stays

In this section there are our gas struts, hatch adjusters as well as push-button locks.

Accessories

Looking for Binoculars? This is the right spot.

Marine fittings

Every boat needs fittings of one type or another. Examples from this range include: breather nipples, skin fittings, hose connections, water scoops, ball valves and hose clamps. These are available in various sizes, designs and materials to suit most applications.

Pumps

In this section there is our series of submersible electric bilge pumps. Available in various sizes with practical design features. Also available is a manual membrane pump and a sturdy single action plunger pumps.

Outboard

Within this section of the V- Quipment brand there is a range of premium outboard steering cables. There are various models and kits available.

Materials

In this section you will find non-slip deck coverings and the versatile polymer sheet Poly-wood.

Anodes

To protect your under water metal parts we provide a wide range of anodes. The materials (zinc and aluminium) of these anodes is of the highest possible standard. The program consists of a wide range of types and applications, think of hull- rudder-, shaft- or stern anodes.

Boat seats

All seats and benches in this range are finished in maintenance free, water and UV resistant skai imitation leather and stainless steel (AISI 304) staples, which is ideal for marine use. The skai imitation leather can also be ordered in rolls of 5 m to match the complete boat interior to your boat seats. See page 407 for more information.



Which pedestal?

Seats are supplied without pedestal. Please find the pedestal of your choice on page 409. The hole patterns (R or S) in the specification tables of the seat and pedestal should match. See the table on the right for the dimensions of the hole patterns.

Seat dimensions (mm)	Hole pattern (threaded) (mm)
	R= (for slides)
	S= (for swivels)

ABYC-H-31 - Seat structure recommendations

The ABYC-H-31 - Seat structure recommendations applies to permanently installed seats in cockpits, deck areas and all helm positions, including their fastenings and structures to which they are attached. It is a guide for the design, testing, construction and installations of these products.

These recommendations are divided into the so called type "A" and type "B" system.



Type "A" system

A seating system (seat and pedestal) designed for occupancy while vessel is underway at any boat speed.



Type "B" system

A seating system (seat and pedestal) designed for occupancy only at boat speed not exceeding 8 km/h (5 miles per hour, 4.3 knots).

The type "A" system is sub-divided into



Type "AO" operators system

Seat mounts must have a positive locking mechanism which shall withstand a torque of 205Nm (150 foot pounds). (Positive locking = by means of a pin lock)



Type "A" system

Seat mounts shall withstand a torque of 41Nm (30 foot pounds).



VETUS has symbolized these recommendations into the below mentioned classification logos, which are shown next to each individual seat mount within the V-Equipment comfort section of this catalogue.



Source: ABYC-H-31

Note: All seats are classified as type "A", a seat combined with a type "AO" seat mount is therefore usable as an operators system. A seat combined with a type "B" seat mount, has the above mentioned usage restrictions.

Comfort


CHCOMW

CHCOMB

CHCOMDBB

CHCOMCB

FOLDED

Commander

The Commander seat is designed for long cruising days, offering excellent back support and comfort. It features a flip-up front section for more space when standing or maneuvering.

Key features:

- High-back design for comfort during longer use
- Flip-up seat for flexible positioning
- Available in luxury and classic upholstery
- Bare version allows full custom upholstery
- Mounting hardware included
- Optional UV-resistant seat cover (CCDS or CCSB)
- The same skai imitation leather is available in rolls for other interior design purposes (see page 407)

Type	Upholstery	Texture (upholstery)	Colour*	RAL
CHCOMW	Yes	Classic	Grey white	9002
CHCOMB	Yes	Classic	Cobalt blue	5013
CHCOMDBB	Yes	Luxury	Brown beige	1011
CHCOMCB	Yes	Classic	Orange brown (cognac)	8023
CHCOMU	No	-	-	-

* Corresponding to RAL

D1 (mm)	D2 (mm)	H1 (mm)	H2 (mm)	W1 (mm)	W2 (mm)	ØT (mm)	Mounting hole pattern	Weight (kg)
684	485	715	610	610	415	720	R	15

Queen

The Queen seat is a practical and comfortable helm seat with a fold-up front section for easier standing or leaning.

Key features:

- Flip-up seat base for extra room
- Durable marine-grade materials
- Optional without upholstery for custom finishes
- Including mounting hardware
- UV and weather-resistant seat cover (CCDS or CCSB) available
- The same skai imitation leather is available in rolls for other interior design purposes (see page 407)

Type	Upholstery	Texture (upholstery)	Colour*	RAL
CHFUS	Yes	Classic	Grey white	9002
CHFUSBL	Yes	Classic	Cobalt blue	5013
CHFUSQU	No	-	-	-

* Corresponding to RAL

D1 (mm)	D2 (mm)	H1 (mm)	H2 (mm)	W1 (mm)	W2 (mm)	ØT (mm)	Mounting hole pattern	Weight (kg)
715	490	600	510	560	460	800	R	12


CHFUS

CHFUSBL

FOLDED

A seat in a different colour? See page 407 for more information.

Comfort


CHFUSW

CHFUSB


FOLDED

CHFUSC

King

The King seat offers excellent comfort and flexibility, ideal for long hours at the helm. It features a built-in headrest and a flip-up front section, allowing for easy transition between sitting and standing positions.

Key features:

- Integrated headrest for added comfort
- Flip-up seat for steering while standing or leaning
- Bare version available for full custom upholstery
- Mounting hardware compatible with slides
- Optional UV-resistant seat cover (CCDS or CCSB)
- The same skai imitation leather is available in rolls for other interior design purposes (see page 407)

Type	Upholstery	Texture (upholstery)	Colour*	RAL
CHFUSW	Yes	Classic	Grey white	9002
CHFUSB	Yes	Classic	Cobalt blue	5013
CHFUSC	Yes	Classic	Light ivory	1015
CHFUSKU	No	-	-	-

* Corresponding to RAL

D1 (mm)	D2 (mm)	H1 (mm)	H2 (mm)	W1 (mm)	W2 (mm)	ØT (mm)	Mounting hole pattern	Weight (kg)
720	490	620	500	570	450	800	R	13

Master

The Master seat is a high-quality helm seat designed for both comfort and durability. With integrated armrests and a strong stainless steel frame, it's ideal for skippers who demand support during longer trips.

Key features:

- Integrated armrests for enhanced comfort
- Stainless steel frame (AISI 304)
- Available in classic and luxury upholstery options
- A bare version allows for full custom upholstery
- Mounting hardware included
- Optional UV-resistant seat cover (CCMS or CCMB)
- The same skai imitation leather is available in rolls for other interior design purposes (see page 407)

Type	Upholstery	Texture (upholstery)	Colour*	RAL
CHFASDPW	Yes	Luxury	Pure white	9010
CHFASC	Yes	Classic	Light ivory	1015
CHFASB	Yes	Classic	Cobalt blue	5013
CHFASW	Yes	Classic	Grey white	9002
CHFASCB	Yes	Classic	Orange brown (cognac)	8023
CHFASU	No	-	-	-

* Corresponding to RAL

D1 (mm)	D2 (mm)	H1 (mm)	H2 (mm)	W1 (mm)	W2 (mm)	ØT (mm)	Mounting hole pattern	Weight (kg)
690	500	630	510	595	510	760	R	15


CHFASDPW

CHFASC

CHFASB

CHFASW

CHFASCB

A seat in a different colour? See page 407 for more information.

Comfort



CHSAILW2



CHSAILB2

Sailor

The Sailor seat combines classic looks with durable materials, making it a reliable choice for any helm station. With stainless steel (AISI 304) armrests and marine-grade upholstery, it provides comfort for long days on the water.

Key features:

- Classic design with clean lines
- Stainless steel armrests (AISI 304) for durability
- Optional UV-resistant seat cover (CCDS or CCSB)
- The same skai imitation leather is available in rolls for other interior design purposes (see page 407)

Type	Upholstery	Texture (upholstery)	Colour*	RAL
CHSAILW2	Yes	Classic	Grey white	9002
CHSAILB2	Yes	Classic	Cobalt blue	5013

* Corresponding to RAL

D1 (mm)	D2 (mm)	H1 (mm)	H2 (mm)	W1 (mm)	W2 (mm)	ØT (mm)	Mounting hole pattern	Weight (kg)
600	440	620	540	585	430	700	R	8,2



CHCASW



CHCASB

Skipper

The Skipper seat combines a timeless look with comfort. Its sturdy aluminum frame and cushioned armrests provide solid support, ideal for various helm positions. Designed to fit all pedestal types, the Skipper is a practical and reliable choice for both new builds and refits.

Key features:

- Classic design with anodized aluminum frame
- Comfortable armrests for relaxed steering
- Optional UV-resistant seat cover (CCDS or CCSB)
- The same skai imitation leather is available in rolls for other interior design purposes (see page 407)

Type	Upholstery	Texture (upholstery)	Colour*	RAL
CHCASW	Yes	Classic	Grey white	9002
CHCASB	Yes	Classic	Cobalt blue	5013

* Corresponding to RAL

D1 (mm)	D2 (mm)	H1 (mm)	H2 (mm)	W1 (mm)	W2 (mm)	ØT (mm)	Mounting hole pattern	Weight (kg)
590	420	535	415	595	430	680	R / S	9,5

A seat in a different colour? See page 407 for more information.

Comfort



FOLDED

CHLIEUTW

CHLIEUTB

Lieutenant

The Lieutenant seat is ideal for comfortable steering, offering support whether seated, standing, or leaning. The foldable front section provides more room and flexibility at the helm.

Key features:

- Flip-up front for standing or leaning positions
- Streamlined and supportive seat shape
- Optional UV-resistant seat cover (CCDS or CCSB)
- The same skai imitation leather is available in rolls for other interior design purposes (see page 407)

Type	Upholstery	Texture (upholstery)	Colour*	RAL
CHLIEUTW	Yes	Classic	Grey white	9002
CHLIEUTB	Yes	Classic	Cobalt blue	5013

* Corresponding to RAL

D1 (mm)	D2 (mm)	H1 (mm)	H2 (mm)	W1 (mm)	W2 (mm)	ØT (mm)	Mounting hole pattern	Weight (kg)
710	510	540	410	585	430	710	R	8


CHSPORTTB

CHSPORTW


FOLDED

CHSPORTWB

Pilot

The Pilot seat is built for performance and style, offering excellent lateral support and comfort for fast cruising. Its flip-up front section allows for flexible use while steering, either seated or in a leaning position.

Key features:

- Sporty design with lateral support for dynamic handling
- Flip-up seat front for standing or leaning positions
- Available in multiple colors and stitching patterns
- Option without upholstery for full custom finish
- Optional UV-resistant seat cover (CCDS or CCSB)
- The same skai imitation leather is available in rolls for other interior design purposes (see page 407)

Type	Upholstery	Texture (upholstery)	Colour*	RAL
CHSPORTTB	Yes	Classic	Traffic black	9002
CHSPORTW	Yes	Classic	Grey white	5013
CHSPORTWB	Yes	Classic	Grey white with black	-
CHSPORTCB	Yes	Classic	Orange brown (cognac)	8023
CHSPORTU	No	-	-	-

* Corresponding to RAL

D1 (mm)	D2 (mm)	H1 (mm)	H2 (mm)	W1 (mm)	W2 (mm)	ØT (mm)	Mounting hole pattern	Weight (kg)
670	475	600	510	500	403	720	R	8,7


CHSPORTCB

A seat in a different colour? See page 407 for more information.



Comfort



CHDRIVEW



CHDRIVEWB



CHDRIVECB

Driver

The Driver seat offers solid lateral support and design, making it ideal for dynamic cruising or fast maneuvering. Its compact form provides comfort without sacrificing space at the helm.

Key features:

- Sporty appearance with ergonomic side supports
- Designed for compact helm stations
- Optional UV-resistant seat cover (CCDS or CCSB)
- The same skai imitation leather is available in rolls for other interior design purposes (see page 407)

Type	Upholstery	Texture (upholstery)	Colour*	RAL
CHDRIVEW	Yes	Classic	Grey white	9002
CHDRIVEWB	Yes	Classic	Grey white with black	-
CHDRIVECB	Yes	Classic	Orange brown (cognac)	8023

* Corresponding to RAL

D1 (mm)	D2 (mm)	H1 (mm)	H2 (mm)	W1 (mm)	W2 (mm)	ØT (mm)	Mounting hole pattern	Weight (kg)
640	450	600	510	520	405	670	R	7

Admiral

The Admiral seat combines style and comfort with practical functionality. Designed for active boaters, it provides strong lateral support and a fold-up front section for optimal space while steering in a standing or leaning position.

Key features:

- Sporty design with side support for stability
- Flip-up seat for versatile steering positions
- Marine-grade upholstery in two classic colors
- Optional UV-resistant seat cover (CCDS or CCSB)
- The same skai imitation leather is available in rolls for other interior design purposes (see page 407)

Type	Upholstery	Texture (upholstery)	Colour*	RAL
CHADMW	Yes	Classic	Grey white	9002
CHADMB	Yes	Classic	Cobalt blue	5013

* Corresponding to RAL

D1 (mm)	D2 (mm)	H1 (mm)	H2 (mm)	W1 (mm)	W2 (mm)	ØT (mm)	Mounting hole pattern	Weight (kg)
730	510	620	550	580	430	730	R	8,5

A seat in a different colour? See page 407 for more information.

Comfort



FOLDED

CHMAJORW**CHMAJORB**

Major

The Major seat provides a practical and comfortable solution for both seated and standing steering positions. With a foldable front section, it offers additional freedom of movement and versatility when maneuvering. Ideal for helmsmen who value comfort without compromising on functionality.

Key features:

- Flip-up front for standing or leaning positions
- Comfortable back and seat support
- Marine-grade upholstery for durability
- Optional UV-resistant seat cover (CCDS or CCSB)
- The same skai imitation leather is available in rolls for other interior design purposes (see page 407)

Type	Upholstery	Texture (upholstery)	Colour*	RAL
CHMAJORW	Yes	Classic	Grey white	9002
CHMAJORB	Yes	Classic	Cobalt blue	5013

* Corresponding to RAL

D1 (mm)	D2 (mm)	H1 (mm)	H2 (mm)	W1 (mm)	W2 (mm)	ØT (mm)	Mounting hole pattern	Weight (kg)
730	510	660	555	585	400	730	R	9,5

**CHSEAMPW**

FOLDED

CHSEAMC

Seaman

The Seaman seat offers a spacious and comfortable design with a classic look. Perfect for long journeys or relaxed cruising, this seat allows flexibility with its flip-up front and armrests. Made with marine-grade materials and corrosion-resistant components, it delivers both elegance and durability.

Key features:

- Classy, roomy design for all-day comfort
- Flip-up front for steering while standing or leaning
- Flip-up armrests for added versatility
- Corrosion-resistant aluminum hinges
- Optional UV-resistant seat cover (CCDS or CCSB)
- The same skai imitation leather is available in rolls for other interior design purposes (see page 407)

Type	Upholstery	Texture (upholstery)	Colour*	RAL
CHSEAMPW	Yes	Classic	Pure white	9010
CHSEAMC	Yes	Classic	Light ivory	1015
CHSEAMMB	Yes	Classic	Mahogany brown	8016
CHSEAMCB	Yes	Classic	Orange brown (cognac)	8023

* Corresponding to RAL

D1 (mm)	D2 (mm)	H1 (mm)	H2 (mm)	W1 (mm)	W2 (mm)	ØT (mm)	Mounting hole pattern	Weight (kg)
590	530	610	490	590	435	730	R	13,7

**CHSEAMMB****CHSEAMCB**

A seat in a different colour? See page 407 for more information.

Comfort



CHFLAGDGW



CHFLAGDCB

Flag Officer

Flag Series chairs are ergonomically designed, foldable seats crafted for easy helm access and maximum comfort during long journeys. These compact chairs combine luxury and durability in elegant luxury grey-white or cobalt blue skai upholstery with a diamond-pressed pattern. They come ready to install with the necessary mounting hardware included.

Key features:

- Forward-folding mechanism with integrated locking system
- High ergonomic backrest
- The same skai imitation leather is available in rolls for other interior design purposes (see page 407)

Type	Upholstery	Texture (upholstery)	Colour*	RAL
CHFLAGDGW	Yes	Luxury	Cobalt blue	5013
CHFLAGDCB	Yes	Luxury	Grey white	9002

* Corresponding to RAL

D1 (mm)	D2 (mm)	H1 (mm)	H2 (mm)	W1 (mm)	W2 (mm)	ØT (mm)	Mounting hole pattern	Weight (kg)
580	427	600	480	480	480	620	R / S	6,6



CHCR



CHCRDGW



CHCRDDG

Captain's rest

This boat seat is designed for comfort and everyday use on the water. The sturdy shell design provides good support and is resistant to water and sunlight. The seat comes with soft seat and back cushions for added comfort, but is also available without cushions - useful for applications where less seating comfort is required.

Key features:

- Compact and lightweight design
- Durable molded shell
- Made from high-quality plastic, resistant to impact, UV rays, and marine conditions
- Easy to clean and designed to withstand frequent exposure to water and sunlight
- The same skai imitation leather is available in rolls for other interior design purposes (see page 407)

Type	Upholstery	Texture (upholstery)	Colour*	RAL	Mounting hole pattern
CHCR	No	-	Light grey	-	R
CHCRDGW	Yes	Luxury	Grey white	9002	R
CHCRDDG	Yes	Luxury	Dust grey	7037	R

* Corresponding to RAL

Type	D1 (mm)	D2 (mm)	H1 (mm)	H2 (mm)	W1 (mm)	W2 (mm)	ØT (mm)	Weight (kg)
CHCR	545	420	430	400	480	420	620	3,6
CHCRD..	545	400	430	350	480	420	620	4,3

A seat in a different colour? See page 407 for more information.

Comfort


CAPTSEAT3

CAPTCSL

CAPTCSB

Captain

The Captain seat is a popular, ergonomically shaped base seat designed for durable comfort and versatility. Delivered without upholstery, upgrade with optional cushion sets. Ideal for boat owners who want a modular solution with flexibility in styling and comfort.

Key features:

- Ergonomic shell for all-day comfort
- Optional cushion sets in two classic color combinations
- Lightweight and compact design
- Optional UV-resistant seat cover (CCDS or CCSB)
- The same skai imitation leather is available in rolls for other interior design purposes (see page 407)

Type	Upholstery	Texture (upholstery)	Colour*	RAL
CAPTSEAT3	No	-	Grey white	-
CAPTCSL	Yes	Classic	Signal grey	7004
CAPTCSB	Yes	Classic	Cobalt blue	5013

* Corresponding to RAL

D1 (mm)	D2 (mm)	H1 (mm)	H2 (mm)	W1 (mm)	W2 (mm)	ØT (mm)	Mounting hole pattern	Weight (kg)
485	430	500	450	530	430	530	R	4,2


CHCS

CHCW

CHCBWB

CHCG


Crew

The Crew seat is a practical, lightweight seating solution designed for flexibility and ease of use. Ideal for a variety of marine applications, it offers the option of use with or without cushions and includes a foldable backrest to optimize space when needed.

Key features:

- Foldable backrest for space-saving storage
- Versions with or without cushions
- Available in multiple durable upholstery finishes
- Optional UV-resistant seat cover (CCDS or CCSB)
- The same skai imitation leather is available in rolls for other interior design purposes (see page 407)

Type	Upholstery	Texture (upholstery)	Colour*	RAL
CHCS	No	-	Light grey	-
CHCW	Yes	Classic	Grey white	9002
CHCBWB	Yes	Classic	Grey white with cobalt blue	9002 5013
CHCG	Yes	Classic	Traffic grey	7043

* Corresponding to RAL

D1 (mm)	D2 (mm)	H1 (mm)	H2 (mm)	W1 (mm)	W2 (mm)	ØT (mm)	Mounting hole pattern	Weight (kg)
482	435	45	405	470	470	630	S	3

A seat in a different colour? See page 407 for more information.

Comfort



CHFSWW



CHFSBW

Fisherman

The Fisherman seat is a simple and practical solution for small boats or casual marine use. Its classic design includes a folding backrest for better access and flexibility on board. Built with anodized aluminum hinges, the Fisherman is lightweight yet durable, making it ideal for both saltwater and freshwater use.

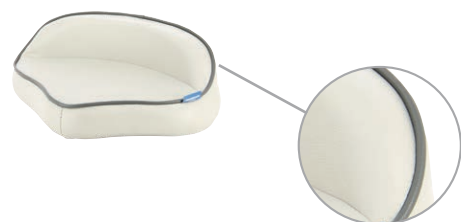
Key features:

- Classic and compact design for smaller vessels
- Folding backrest for easier access or storage
- Durable anodized aluminum hinges
- Optional UV-resistant seat cover (CCDS or CCSB)
- The same skai imitation leather is available in rolls for other interior design purposes (see page 407)

Type	Upholstery	Texture (upholstery)	Colour*	RAL
CHFSWW	Yes	Classic	Grey white	9002
CHFSBW	Yes	Classic	Cobalt blue	5013

* Corresponding to RAL

D1 (mm)	D2 (mm)	H1 (mm)	H2 (mm)	W1 (mm)	W2 (mm)	ØT (mm)	Mounting hole pattern	Weight (kg)
480	350	450	360	400	400	575	R / S	3,3



CHPRIVEL

Private seat

This seat is your trusted companion for fishing. Its compact and lightweight design offers just the right support when needed, while being easy to clean and maintain. Ideal for boats where space is limited but comfort is still important.

Key features:

- Compact and lightweight for smaller boats
- Designed to support during fishing or short cruising
- The same skai imitation leather is available in rolls for other interior design purposes (see page 407)

Type	Upholstery	Texture (upholstery)	Colour*	RAL
CHPRIVEL	Yes	Classic	Light grey with dark grey seam	-

* Corresponding to RAL

D1 (mm)	D2 (mm)	H1 (mm)	H2 (mm)	W1 (mm)	W2 (mm)	ØT (mm)	Mounting hole pattern	Weight (kg)
285	220	137	90	397	370	400	S	1,2

Comfort


CHFSW

CHFSB

CHFSL

CHFSD

CHFDGW

CHFDCB

First Mate

The First Mate seat delivers a blend of style and comfort, ideal for leisure cruising or calm fishing trips. Its foldable backrest and sturdy anodized aluminum hinges make it a practical and reliable choice for a wide variety of boat setups.

Key features:

- Comfortable deluxe design for extended use
- Available in classic and luxury upholstery options
- Folding backrest for flexible cockpit layout
- Anodized aluminum hinges for durability
- Optional UV-resistant seat cover (CCDS or CCSB)
- The same skai imitation leather is available in rolls for other interior design purposes (see page 407)

Type	Upholstery	Texture (upholstery)	Colour*	RAL
CHFSW	Yes	Classic	Grey white	9002
CHFSB	Yes	Classic	Cobalt blue	5013
CHFSL	Yes	Classic	Light grey	-
CHFSD	Yes	Classic	Grey with light grey seams	-
CHFDGW	Yes	Luxury	Grey white	9002
CHFDCB	Yes	Luxury	Cobalt blue	5013

* Corresponding to RAL

D1 (mm)	D2 (mm)	H1 (mm)	H2 (mm)	W1 (mm)	W2 (mm)	ØT (mm)	Mounting hole pattern	Weight (kg)
480	350	450	360	400	400	575	R / S	3,3


DCHFSW

DCHFSB


First Class

Comfortable deluxe double seat with folding back rest. Anodised aluminium hinges.

Available colours:

- Grey white with cobalt blue seams (DCHFSW)
- Cobalt blue with grey white seams (DCHFSB)

The same skai imitation leather is available in rolls for other interior design purposes (see page 407).

Supplied without pedestal. Fits on two pedestals.

D1 (mm)	D2 (mm)	H1 (mm)	H2 (mm)	W1 (mm)	W2 (mm)	ØT (mm)	Mounting hole pattern	Weight (kg)
480	350	450	360	900	900	-	2xR	13

A seat in a different colour? See page 407 for more information.



Comfort



CHTBSW



CHTBSB

Ferry

Seat with moveable double sided backrest.
Anodised aluminium hinges.

Available colours:

- Grey white with cobalt blue seams (CHTBSW)
- Cobalt blue with grey white seams (CHTBSB)

The same skai imitation leather is available in rolls for other interior design purposes (see page 407).

Supplied without pedestal. Fits all pedestals. Use seat cover CCDS or CCSB to keep the seat clean and protected against UV.

D1 (mm)	D2 (mm)	H1 (mm)	H2 (mm)	W1 (mm)	W2 (mm)	ØT (mm)	Mounting hole pattern	Weight (kg)
570	375	460	380	420	420	706	R / S	6



DCHTBSW



DCHTBSB

Ferry Bench

Double seat with moveable double sided backrest.
Anodised aluminium hinges.

Available colours:

- Grey white with cobalt blue seams (DCHTBSW)
- Cobalt blue with grey white seams (DCHTBSB)

The same skai imitation leather is available in rolls for other interior design purposes (see page 407).

Supplied without pedestal. Fits on two pedestals (with or without slide).

D1 (mm)	D2 (mm)	H1 (mm)	H2 (mm)	W1 (mm)	W2 (mm)	ØT (mm)	Mounting hole pattern	Weight (kg)
570	375	460	380	900	900	-	2xR / 2xS	15

A seat in a different colour?
See page 407 for more information.

Seat cover - weather proof

To keep the seat dry and clean and protected against UV. Made of nylon with PU coating. A drawstring is included.

Type	Description	D (mm)	H (mm)	W (mm)	Suitable for
CCDS	Seat cover silver*	500	830	640	All single seats
CCSB	Seat cover blue	500	830	640	All single seats
CCMS	Seat cover silver*	580	700	580	Master seats
CCMB	Seat cover blue	580	700	580	Master seats

*We advise to use the silver cover for light colored seats and use the blue cover for dark seats.



CCDS



CCSB



CCMS



CCMB

Comfort

Custom seat program - CHSKAI Stand out with style

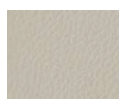
Want a unique look or matching upholstery? V-Quipment's custom seat program offers eighteen marine-grade skai imitation leather colours. Just choose two or more un-upholstered seats, select your colours, and we'll do the rest - even add your logo if desired. The marine grade skai imitation leather is UV- and water-resistant, maintenance-free, and also available (as special to order) by the roll (1.37 m wide, 5 m long).

Classic skai, special to order rolls

Type	Colour	RAL code
CHSKAIB	Cobalt blue	5013
CHSKAIW	Grey white	9002
CHSKAIC	Light ivory	1015
CHSKAITG	Traffic grey	7043
CHSKAILG	Signal grey	7004
CHSKAIPW	Pure white	9010
CHSKAIRR	Ruby red	3003
CHSKAIGB	Graphite black	9011
CHSKAIGY	Golden yellow	1004
CHSKAIEG	Emerald green	6001
CHSKAIMB	Mahogany brown	8016
CHSKAISB	Sapphire blue	5003
CHSKAISG	Slate grey	7015
CHSKIAIW	Aluminium white	9006
CHSKAITB	Traffic black	9017
CHSKAICB	Orange (cognac) brown	8023
CHSKAIBB	Beige brown	8024
CHSKAIGRB	Grey beige	1019



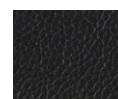
CHSKAIB
Cobalt blue
RAL 5013



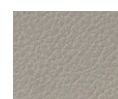
CHSKAIW
Grey white
RAL 9002



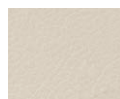
CHSKAIC
Light ivory
RAL 1015



CHSKAITG
Traffic grey
RAL 7043



CHSKAILG
Signal grey
RAL 7004



CHSKAIPW
Pure white
RAL 9010



CHSKAIRR
Ruby red
RAL 3003



CHSKAIGB
Graphite black
RAL 9011



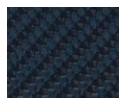
CHSKAIGY
Golden yellow
RAL 1004



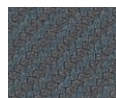
CHSKAIEG
Emerald green
RAL 6001



CHSKAIMB
Mahogany brown
RAL 8016



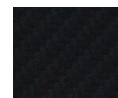
CHSKAISB
Sapphire blue
RAL 5003



CHSKAISG
Slate grey
RAL 7015



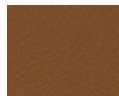
CHSKIAIW
Aluminium white
RAL 9006



CHSKAITB
Traffic black
RAL 9017



CHSKAICB
Orange brown
RAL 8023

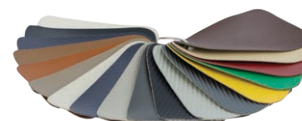


CHSKAIBB
Beige brown
RAL 8024



CHSKAIGRB
Grey beige
RAL 1019

S.CHSKAI



Already have a boat? Order skai by the roll to match your current interior. A sample set is available as well.

Custom seat program - A touch of elegance, luxury and refinement

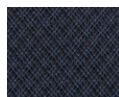
The marine grade skai imitation leather custom seat program now features a sophisticated new addition: diamond texture and diamond-stitched pattern, available in eleven colours. This remarkable combination brings a touch of elegance and refinement, making it a perfect upgrade for your interior.

Luxury skai, special to order rolls

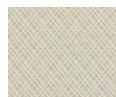
Type	Colour	RAL code
CHSKAIDBR	Brown red	3011
CHSKAIDCB	Cobalt blue	5013
CHSKAIDGW	Grey white	9002
CHSKAIDSG	Silk grey	7044
CHSKAIDLB	Light blue	5012
CHSKAIDGB	Graphite black	9011
CHSKAIDDG	Dust grey	7037
CHSKAIDBB	Brown beige	1011
CHSKAIDPW	Pure white	9010
CHSKAIDBG	Beige grey	1019
CHSKAIDTG	Traffic grey	7043



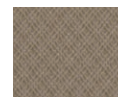
CHSKAIDBR
Brown red
RAL 3011



CHSKAIDCB
Cobalt blue
RAL 5013



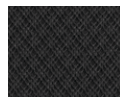
CHSKAIDGW
Grey white
RAL 9002



CHSKAIDSG
Silk grey
RAL 7044



CHSKAIDLB
Light blue
RAL 5012



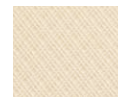
CHSKAIDGB
Graphite black
RAL 9011



CHSKAIDDG
Dust grey
RAL 7037



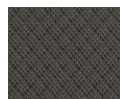
CHSKAIDBB
Brown beige
RAL 1011



CHSKAIDPW
Pure white
RAL 9010



CHSKAIDBG
Beige grey
RAL 1019



CHSKAIDTG
Traffic grey
RAL 7043

S.CHSKAID



Comfort

All seats can be customized, but the following un-upholstered models are in stock: Commander (CHCOMU), Queen (CHFUSQU), King (CHFUSKU), Master (CHFASU), and Pilot (CHSPORTU). Each comes with a pattern sheet for easy DIY upholstery.

Colour combinations are possible as well. V-Quipment custom made seat program is available to special order. Minimum order quantities for custom made upholstery are two of any seat type. Price on request.

We can even embroider your logo if you wish.



Special order



Comfort

Seat pedestals

All pedestals are made of high grade aluminium and have a 360° rotatable swivel on top. Gas adjustable pedestals are operated with a handle. Manually adjustable pedestals have both a lock-pin with a locking position every 25 mm and a clamping knob for complete security. The sliding mechanism can be moved through 135 mm in total and locked in one of seven positions.

Note: An explanation of the classification logo which is shown next to each seat mount can be found on page 395 of the catalogue.

Pedestal dimensions (mm)	Mounting hole pattern (mm)
	<p>R= 127 (for slides) 300</p> <p>S= 127 (for swivels)</p>


PCM3040
PCM3547
PCM4363

Pedestal (height adjustable)

Manually height adjustable aluminium seat pedestal with 360° swivel only. Anodised base.

Type	Height (H) (mm)	Mounting hole pattern	Post Ø (D1 / D2) (mm)	Base Ø (D3) (mm)	Weight (kg)
PCM3040	300 - 400	S	60 / 73	228	4
PCM3547	350 - 470	S	60 / 73	228	5
PCM4363	435 - 635	S	60 / 73	228	5,8


PCMS3040
PCMS3547
PCMS4363

Pedestal (height adjustable)

Manually height adjustable aluminium seat pedestal with slide and 360° swivel. Polished base.

Type	Height (H) (mm)	Mounting hole pattern	Post Ø (D1 / D2) (mm)	Base Ø (D3) (mm)	Weight (kg)
PCMS3040	300 - 400	R / S	73 / 87	228	6
PCMS3547	350 - 470	R / S	73 / 87	305	7
PCMS4363	435 - 635	R / S	73 / 87	305	7,8


PCG3040
PCG3547
PCG4363
PCG5680

Pedestal (height adjustable)

For optimum enjoyment of your seat. Gas spring height adjustable aluminium seat pedestal with slide and 360° swivel. Polished base.

Type	Height (H) (mm)	Mounting hole pattern	Post Ø (D1 / D2) (mm)	Base Ø (D3) (mm)	Weight (kg)
PCG3040	300 - 400	R / S	73 / 87	228	6
PCG3547	350 - 470	R / S	73 / 87	305	7
PCG4363	435 - 605	R / S	73 / 87	305	7,8
PCG5680	560 - 800	R / S	73 / 87	305	9

Comfort


PCG4363B
PCG5680B

Pedestal (height adjustable)

These sturdy, gas-assisted height-adjustable seat pedestals are built for marine environments. Made from high-quality aluminum with a (fully black) anodized finish, they offer excellent protection against UV and harsh weather conditions ensuring long-lasting durability. Both models feature a 360° swivel and sliding mechanism for easy seat adjustment and added comfort on board.

Type	Height (H) (mm)	Mounting hole pattern	Post Ø (D1 / D2) (mm)	Base Ø (D3) (mm)	Weight (kg)
PCG4363B	435 - 605	R / S	73 / 87	305	7,8
PCG5680B	560 - 800	R / S	73 / 87	305	9


PCFS33

PCF33

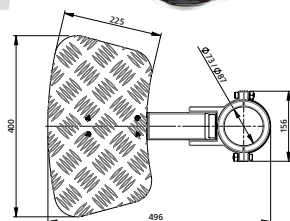
PCFS45

PCF45

Pedestal (fixed height)

With 360° swivel, available with or without slide. Anodised base.

Type	Slide	Height (H) (mm)	Mounting hole pattern	Post Ø (D2) (mm)	Base Ø (D3) (mm)	Weight (kg)
PCFS33	✓	330	R / S	73	228	4,2
PCF33	-	330	S	73	228	
PCFS45	✓	457	R / S	73	228	4,8
PCF45	-	457	S	73	228	


FTREST..


Footrest

Rotatable and foldable footrest for pedestals. Made from a marine grade aluminium with stainless steel fastenings. For extra grip the aluminium base plate has a diamond profile.

Type	Description	For post Ø (D2) (mm)	Suits pedestal type	Weight (kg)
FTREST73	Footrest	73	PCM, PCF	3,5
FTREST87	Footrest	87	PCMS, PCG	3,5

Does not fit type PCR nor PCQ pedestals.


PCBELL

Pedestal (height adjustable)

A seat pedestal with a friction lock 360° swivel. The height is manually adjustable. Made from a marine grade aluminium. The large bell shaped base is grey powder coated.

Type	Height (H) (mm)	Mounting hole pattern	Post Ø (D1) (mm)	Base Ø (D3) (mm)	Weight (kg)	Load static (kg)	Load dynamic (kg)
PCBELL	330 - 430	S	60	254	2,3	204	102

Comfort



PC13



Base (fixed height)

Low profile anodised base with 360° swivel.

Type	Height (H) (mm)	Mounting hole pattern	Post Ø (D1) (mm)	Base Ø (D3) (mm)	Weight (kg)	Load static (kg)	Load dynamic (kg)
PC13	134	S	73	228	2	204	102



PCS15



Base (fixed height)

Low profile anodised base with 360° swivel and slide.

Type	Height (H) (mm)	Mounting hole pattern	Post Ø (D1) (mm)	Base Ø (D3) (mm)	Weight (kg)	Load static (kg)	Load dynamic (kg)
PCS15	153	R / S	73	228	4	204	102



PCBS



Swivel with slide

Aluminium 360° swivel with slide with seven locking positions. For direct mounting.

Type	Height (H) (mm)	Mounting hole pattern	Base Ø (D3)	Weight (kg)	Load static (kg)	Load dynamic (kg)
PCBS*	70	R / S	S	2,5	204	102
PCBSR**	70	R / S	S	2,5	204	102

* The lever controls positioned at left and right side.

** The lever controls positioned at one side.



PCBL



Base, rotatable with locking position

Aluminium 360° rotatable base with seven locking positions. For direct mounting.

Type	Height (H) (mm)	Mounting hole pattern	Base	Weight (kg)	Load static (kg)	Load dynamic (kg)
PCBL	51	S	S	2	204	102



PCB



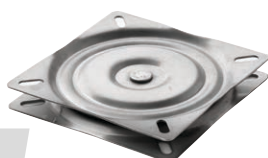
Base, rotatable and removable

Rotatable and removable synthetic 360° swivel base for direct mounting.

Type	Height (H) (mm)	Mounting hole pattern	Base	Weight (kg)	Load static (kg)	Load dynamic (kg)
PCB	55	S	S	0,7	204	102



PCBR



Base, rotatable

360° Rotatable base for direct mounting. Made from stainless steel (AISI 304).

Type	Height (H) (mm)	Mounting hole pattern	Base	Weight (kg)	Load static (kg)	Load dynamic (kg)
PCBR	23	S	S	1	204	102

Comfort



SCU

Slide

Seat slide for direct mounting. The sliding mechanism can be moved through 135 mm in total and locked in one of seven positions.

Type	Height (H) (mm)	Mounting hole pattern	Base	Weight (kg)	Load static (kg)	Load dynamic (kg)
SCU	70	R + S	S	2	204	102



PCR38



PCRS38

Pedestal, removable (fixed height)

With 360° swivel or slide and recessed anodised base. Base and pedestal fit most commonly used similar systems in the market.

Type	Swivel (hole pattern)	Height (H) (mm)	Post Ø (D2) (mm)	Base Ø (D3) (mm)	Recessed depth (mm)	Cut out deck Ø (mm)
PCR38	Swivel (S)	380	60	229	70	90
PCRS38	Slide (R)	380	60	229	70	90



PCRQ33



PCRQ38

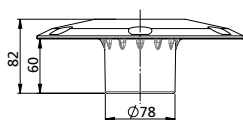
Pedestal, removable (fixed height)

With 360° swivel and recessed anodised base. Base and pedestal fit most commonly used similar systems in the market. Swivel 3° angled.

Type	Swivel (hole pattern)	Height (H) (mm)	Post Ø (D2) (mm)	Base Ø (D3) (mm)	Recessed depth (mm)	Cut out deck Ø (mm)
PCRQ33	Quick position (S)	330	60	229	70	90
PCRQ38	Quick position (S)	380	60	229	70	90



PCRBASE



Base, for pedestal

This (spare) plug-in pedestal base can be used as an extra mounting position or as replacement for existing pedestal bases. The base is made of a marine grade anodized aluminium.

Type	Height (mm)	Base Ø (D3) (mm)	Recessed depth (mm)	Cut out deck Ø (mm)
PCRBASE	82	229	70	90

Comfort

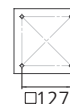
Quick positioning series seat pedestals

Pedestals in the quick positioning series are specially suitable for applications where multiple seating positions are used, such as in fishing boats. There are two positioning systems: a very quick click in system and a more sturdy threaded system. The components that form a complete pedestal can be ordered separately to offer great flexibility in seating configuration. Please make sure you order a swivel, leg and base to complete the pedestal. The quick release pedestals fit seats with hole pattern type S.



Swivel

Seat mount swivel with spring. Angled 3°. Outside dimension swivel: 168 x 168



Type	Connection	Mounting hole pattern	Height (mm)	Weight (kg)
PCQSWIV	Click	S	140	1

Post (fixed height)

Available with click or threaded connection. Anodised aluminium.

Type	Base Connection	Height (H) (mm)	Post Ø (mm)	Weight (kg)
PCQF28C	Click	280	45	0,6
PCQF28T	Threaded	280	45	0,7
PCQF33C	Click	330	45	0,65
PCQF33T	Threaded	330	45	0,75
PCQF38C	Click	380	45	0,8
PCQF38T	Threaded	380	45	0,85

Post with swivel (height adjustable)

Available with click or threaded connection. Angled 3°. 360° swivel included.

Type	Base Connection	Height (H) (mm)	Post Ø (mm)	Mounting hole pattern	Weight (kg)
PCQG5774C	Click	570 - 740	45	S	2,1
PCQG5774T	Threaded	570 - 740	45	S	2,3

This adjustable pedestal contains chromed steel parts, we advise against use on salt water.

Base

Stainless steel (AISI 316)

Type	Connection type	Base dimensions (mm)	Recessed depth (mm)	Hole Ø (mm)	Weight (kg)
PCQBASEC	Click	174 x 174	60	55	1
PCQBASET	Threaded	174 x 174	90	55	1,2



Comfort

Tables

All table tops are made from white synthetic material and have four cupholders incorporated. The table pedestals are high grade aluminium. The unique locking systems on the threaded base ensures a sturdy table. Separate base plates make various table positions on your boat possible.


PTTF68

PTF68


Table (fixed height)

Removable from the base. The screwed connection ensures a very sturdy table. Anodised aluminium.

Type	Top (mm)	Height (mm)	Base Ø (mm)	Max. load (kg)
PTTF68	Oval, 450 x 765	685	178	22
PTF68	Round, Ø 610	685	178	22


PTT5070

TPM5070


Table (height adjustable)

Removable from the base. The screwed connection ensures a very sturdy table. Polished pedestal, anodised base.

Type	Top (mm)	Height (mm)	Base Ø (mm)	Max. load (kg)
PTT5070	Oval, 450 x 765	500 - 700	178	22
TPM5070	Round, Ø 610	500 - 700	178	22


PTTR68

PTR68


Table (fixed height)

Fixed height, easy to place and remove due to the countersunk connection to the base. Anodised aluminium.

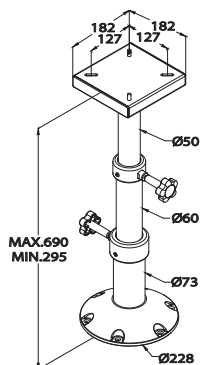
Type	Top (mm)	Height (mm)	Base Ø (mm)	Recessed depth (mm)	Cut out deck Ø (mm)	Max. load (kg)
PTTR68	Oval, 450 x 765	685	171	50	72	22
PTR68	Round, Ø 610	685	171	50	72	22

Comfort

Table pedestals



PCMS2969



Pedestal (telescopic)

Three stage, height adjustable table pedestal. Anodised aluminium.

Type	Height (mm)	Base Ø (mm)	Max. load (kg) Extended	Max. load (kg) Retracted
PCMS2969	295 - 690	228	22	102



PT68



PS68

Pedestal, removable (fixed height)

These pedestals ensure a secure connection between table and deck. The PT68 features a sturdy screw-down base but still removable, while the PS68 offers a quick-remove, countersunk base. Both allows easy table removal when space is needed. The models are compatible with standard V-Quipment table tops.

Type	Connection type	Height (mm)	Base Ø (mm)	Recessed depth (mm)	Cut out deck Ø (mm)
PT68	screwed	685	178	-	-
PS68	countersunk	685	171	50	72



PTSM2969



PTSG3269

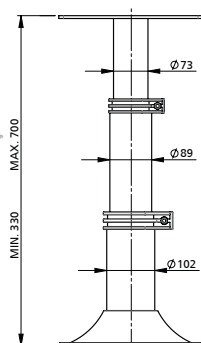
Pedestal, removable (telescopic)

The PTSM2969 and PTSG3269 are sturdy table pedestals from the V-Quipment range, made for use on board. Built from marine-grade aluminum, they are strong, adjustable, and simple to install. These pedestals offer a reliable solution for any table setup on your boat. Extra separate bases are available.

Type	Connection type	Height (mm)	Base Ø (mm)	Recessed depth (mm)	Cut out deck Ø (mm)
PTSM2969	countersunk	290 - 690	171	85	95
PTSG3269	countersunk	320 - 690	171	85	95
PTSMBASE	countersunk	90	171	85	95
PTSGBASE	countersunk	90	171	85	95



PTG3370M



Three stage table pedestal

A marine grade hand polished and anodized table pedestal. Height adjustment is assisted by a 230N gas spring. Locked by handles.

PTG3370M

The height adjustment (assisted by a gas spring) must be locked with the handles.

Type	Height (mm)	Base Ø (mm)	Max. load (kg) Extended	Max. load (kg) Retracted
PTG3370M	335 - 700	305	102	102

Comfort

Tables

These top quality parts and products in the V-Quipment table line are now available for a "mix and match to suit your needs". By having the choice to combine shape, size, options and finish we hope to cater to your needs in every possible situation. We guarantee that all choices are fit for combination and that the result will always be a sturdy, high quality product which is easy to install. The use of corrosion resistant materials will make sure that the combination of your choice will stand the test of time.

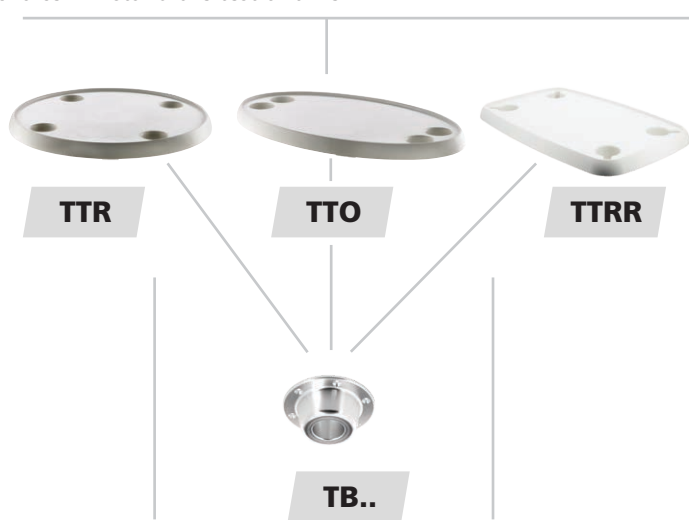


Table top

Made from white synthetic material. With four cupholders incorporated.

Type	Top (mm)
TTR	Round, Ø 610
TTO	Oval, 450 x 765
TTRR	Rectangled, 462 x 762

Swivel for table top

Type	Description
TBT	Table swivel anodised aluminium
TBTBA	Table swivel bright anodised aluminium

Table post

The table posts are made of high grade aluminium. Available in fixed- or adjustable heights.

Type	Description	Height (mm)
TCCA	Table post with tapered ends, anodized	685
TCCP	Table post with tapered ends, polished	685
TCSA	Table post with screw connection, anodized	685
TCSP	Table post with screw connection, polished and bright anodised	685
TCSPM	Table post with screw connection, polished and bright anodised, manually adjustable	500 - 700
TCSPG	Table post with screw connection, polished and bright anodised, gas adjustable	500 - 700

Base

These (spare) bases can be mounted directly on the deck. In addition to being part of the "mix and match" program they can also be used as an extra table position or as replacement for existing pedestal bases.

The bases are made of a marine grade anodized aluminium. The TBR and TBRBA have a unique locking system to ensure a sturdy table system.

Type	Description	Connection	Base Ø (mm)	Recessed depth (mm)	Cut out Ø (mm)	Weight (kg)
TBF	Anodised	Countersunk	171	50	72	0,5
TBFBA	Bright anodised	Countersunk	171	50	72	0,5
TBR	Anodised	Screw down	178	-	-	0,4
TBRBA	Bright anodised	Screw down	178	-	-	0,4

Deck equipment

**H12.****H24.****H12D****H24D**

Horns, electric

Being heard on the water is just as important as being seen. That's why we offer a range of electric horns for all types of boats. These horns are compact, reliable, and made from high-quality materials like stainless steel and chrome-plated ABS. All models are available in 12 or 24 VDC.

Type	Horns	Pitch	Freq. (Hz)	Vol. (dB)	Length (mm)	Height (mm)	Width (mm)
H12L	1	Low	310	115	465	125	100
H12H	1	High	370	115	410	125	100
H24L	1	Low	310	115	465	125	100
H24H	1	High	370	115	410	125	100
H12D	2	High + Low	370 + 310	115	465	125	200
H24D	2	High + Low	370 + 310	115	465	125	200

**C12L****C12D**

Horns, electric, compact shell

Electric horns. Stainless steel (AISI 304). Available in 12 VDC.

Type	Horns	Pitch	Freq. (Hz)	Vol. (dB)	Length (mm)	Height (mm)	Width (mm)
C12L	1	Low	440	110	83	56	104
C12D	2	High + low	500 + 440	110	205	56	85

**TNA12.****TNA24.**

Horns, electric, compact

Deluxe compact electric horns. Horn made of chromium plated ABS and stainless steel (AISI 304). Available in 12 or 24 VDC and with high pitch and/or low pitch sound. Supplied with relay.

Type	Horns	Pitch	Freq. (Hz)	Vol. (dB)	Length (mm)	Height (mm)	Width (mm)
TNA12L	1	Low	420	115	97	114	95
TNA12H	1	High	480	115	97	114	95
TNA24L	1	Low	420	115	97	114	95
TNA24H	1	High	480	115	97	114	95
TNA12D	2	High + Low	480 + 420	115	195	114	95
TNA24D	2	High + Low	480 + 420	115	195	114	95

Deck equipment



T12

Horns, electric, flush mount

Flush mounted electric horns. Synthetic housing, stainless steel (AISI 304) diaphragm. Available in 12 VDC. Includes white, black and chrome plated ABS cover.

Type	Horns	Pitch	Freq. (Hz)	Vol. (dB)	Cover length (mm)	Cover height (mm)	Build in depth (mm)
T12	1	Low	440	110	128	62	95



HORNPB

Push-button for marine horn

This push button may operate marine horns, with a current consumption of 15 A maximum. Suitable for 12 and 24 VDC electrical installations.

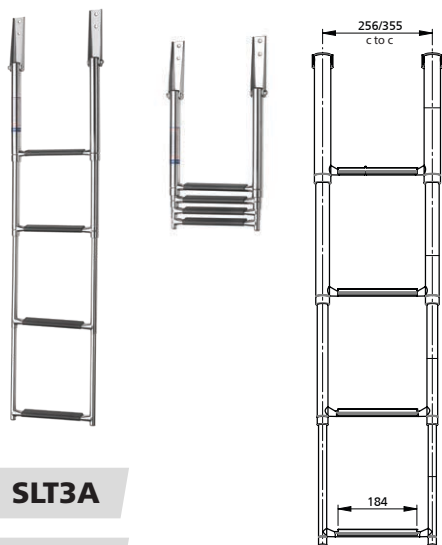
Specifications

- Cut-out diameter: Ø 31 mm
- Outside dimensions: Ø 38 mm
- Watertight to IP67

Type	Description
HORNPB	Horn push button, max 15A, 12/24 V

Ladders

Our boarding and swim ladders are made from high-quality stainless steel (AISI 316) and are designed for safe and easy use on board. Whether you choose a telescopic, folding, or luxury deck-mounted model, all ladders are built to last and offer a secure grip thanks to the black synthetic step covers. They are easy to install, compact when stored, and suitable for many types of boats. All ladders are tested for strength.



SLT3A

SLT4A

Ladder, telescopic

Stainless steel (AISI 316). Available with three or four steps and in two different widths. With synthetic black grips.

Type	Steps	L (extended) (mm)	L (retracted) (mm)	Width (c to c)* (mm)	Tube Ø (mm)	Weight (kg)	Max. load (kg)
SLT3A	3	880	375	256	19/25/32	2,7	300
SLT4A	4	1165	405	256	19/25/32/38	3,6	300
SLT3AW	3	895	375	355	19/25/32	2,9	300
SLT4AW	4	1160	415	355	19/25/32/38	4,0	300

* c to c means distance between tube centers

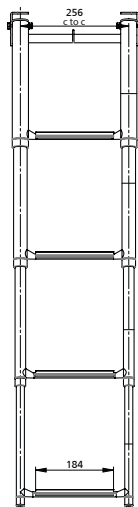
Deck equipment



SLT3PA



SLT4PA

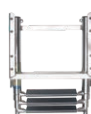


Ladder, telescopic platform

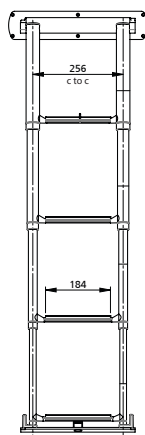
Stainless steel (AISI 316). Available with three or four steps.
With synthetic black grips.

Type	Steps	L (extended) (mm)	L (retracted) (mm)	Width (c to c)* (mm)	Tube Ø (mm)	Weight (kg)	Max. load (kg)
SLT3PA	3	875	370	256	19/25/32	3,6	300
SLT4PA	4	1165	405	256	19/25/32/38	5,1	300

* c to c means distance between tube centers



SLT4CA



Ladder, telescopic cassette

High gloss polished stainless steel (AISI 316). Available with four steps.
With black synthetic grips.

Type	Steps	L (extended) (mm)	L (retracted) (mm)	Width (c to c)* (mm)	Tube Ø (mm)	Weight (kg)	Max. load (kg)
SLT4CA	4	1160	0	256	19/25/32/38	8,0	300

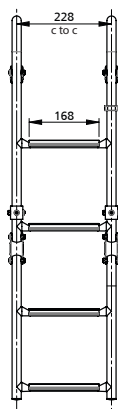
* c to c means distance between tube centers



SLFB3A



SLFB4A



Ladder, folding, deck mounted

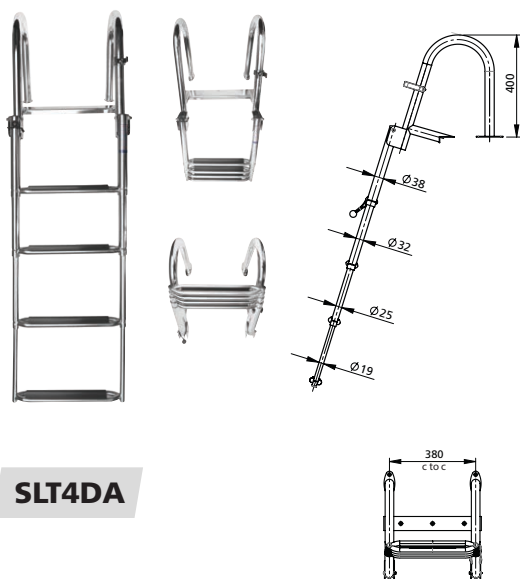
Stainless steel (AISI 316). Available with three or four steps with synthetic black grips.

Type	Steps	L (extended) (mm)	L (retracted) (mm)	Width (c to c)* (mm)	Tube Ø (mm)	Weight (kg)	Max. load (kg)
SLFB3A	3	685	375	228	22	1,8	175
SLFB4A	4	920	550	228	22	2,3	175

* c to c means distance between tube centers



Deck equipment



SLT4DA

Ladder, luxury, deck mounted

Telescopic swim ladder with four steps. Stainless steel (AISI 316). With black synthetic grips.

Heavy duty stainless steel construction with a L-angle bracket for extra support that goes across the edge of a deck. This luxury ladder extends 1120 mm below the deck when it is unfolded.

- The handrails help you to climb on board easily
- The steps are covered with black synthetic grips to give extra safety with bare feet

Type	Steps	L (extended) (mm)	L (retracted) (mm)	Width (c to c)* (mm)	Tube Ø (mm)	Weight (kg)	Max. load (kg)
SLT4DA	4	1600	480	380	19/25/32/38	8,5	300

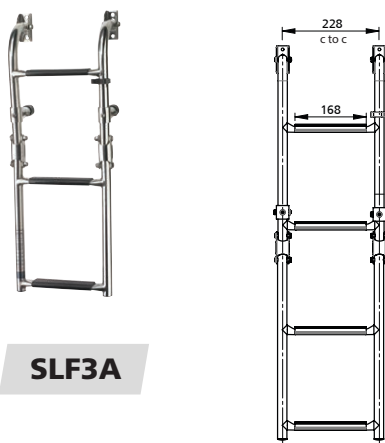
* c to c means distance between tube centers

Ladder, folding, transom mounted

Stainless steel (AISI 316). Available with three or four steps. With synthetic black grips.

Type	Steps	L (extended) (mm)	L (retracted) (mm)	Width (c to c)* (mm)	Tube Ø (mm)	Weight (kg)	Max. load (kg)
SLF3A	3	625	330	228	22	1,9	175
SLF4A	4	905	445	228	22	2,4	175

* c to c means distance between tube centers



SLF3A



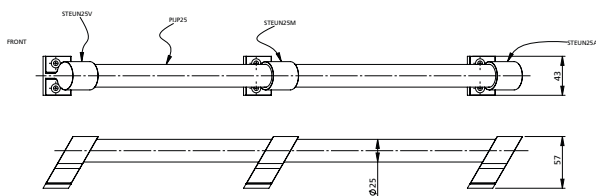
SLF4A

Deck equipment



PIJP

STEUN..



Handrail, stainless steel (AISI 316)

Rail pipe and rail support available in Ø 20 mm and Ø 25 mm. Pipe is available per metre. Supports must be ordered separately, please see price list.

Type	Tube Ø (mm)	Wall thickness (mm)	Max. pipe length (mm)
PIJP	20	1,5	6000
PIJP25	25	1,5	6000

Type	Tube Ø (mm)	Support
STEUN20V	20	Front
STEUN20A	20	Rear
STEUN20M	20	Middle
STEUN25V	25	Front
STEUN25A	25	Rear
STEUN25M	25	Middle

Stanchions, stainless steel (AISI 316)

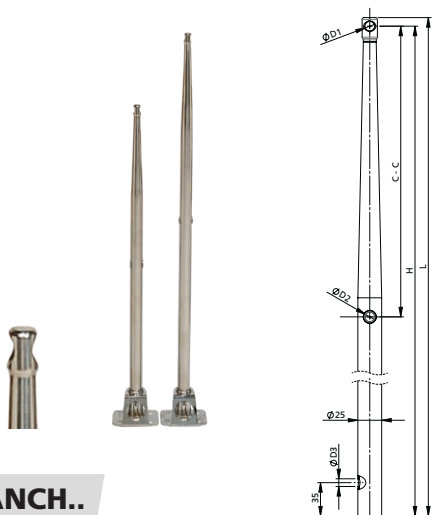
Tapered with two wire holes. Max. railing wire 9,5 mm.

Supplied without the sockets.

Type	Length (mm)	Height (mm)	C - C (mm)	D1 (mm)	D2 (mm)	D3 (mm)	Hole spacing
STANCH61	619	610	305	10,1	10,1	8	2 wire holes at 305 / 610
STANCH75	759	750	360	10,1	10,1	8	2 wire holes at 360 / 750

Suitable for STANCHPR + STANCHPS

STANCH..



Stanchion sockets, stainless steel (AISI 316)

Specifications

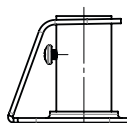
- Diameter: 25 mm
- 90° straight or with 6° angle

Type	Description
STANCHPR	Straight
STANCHPS	Angled

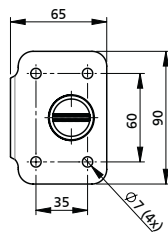
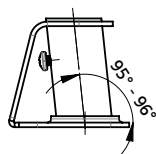
Suitable for STANCH61 + STANCH75



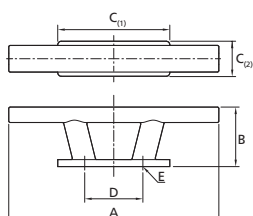
STANCHPR



STANCHPS



Deck equipment


TAURUS..


Taurus cleats

The Taurus cleats are solid, reliable, and easy to use. Made from high-gloss polished stainless steel (AISI 316), they are built to last in tough marine conditions. These cleats have smooth edges for safe line handling and clean deck installations. Most models are designed with hidden fastenings underneath for a neat look. Whether you are mooring a small boat or a larger vessel, there's a Taurus cleat to match your needs - with safe working loads from 575 kg up to 2620 kg.

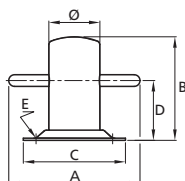
Key features:

- Made of high-quality stainless steel (AISI 316)
- Polished surface
- Safe working loads up to 2620 kg
- Hidden fastenings on most models
- Multiple sizes and mounting styles available
- Easy to install and maintain

Type	Model	SWL* (kgf)	A (mm)	B (mm)	C ₍₁₎ x C ₍₂₎ (mm)	D (mm)	E (mm)
TAURUS01	A	575	140	50	90 x 30	47	M8 (2x)
TAURUS02	A	900	195	60	121 x 35	69	M10 (2x)
TAURUS03	A	1310	255	75	150 x 40	83	M12 (2x)
TAURUS04	A	2470	300	85	160 x 50	83	M16 (2x)
TAURUS05	B	2470	300	85	200 x 85	83	M16 (2x)
TAURUS06**	C	2620	300	85	200 x 85	130 x 55	Ø 12,5 (4x)

* SWL = Safe working load

** Four holes in a rectangle as dimensioned by D. Holes are 90° countersunk.


ACHIL...


Bollard

Made of high-gloss polished stainless steel (AISI 316). Bollards type ACHILZ are suitable for direct welding to the deck. Dimensions are similar to ACHIL.

Type	SWL*	A (mm)	B (mm)	Ø (mm)	C (mm)	D (mm)	E (mm)
ACHIL080	620 kgf	120	90	40	80 x 65	52	4 x Ø6,5
ACHIL090	620 kgf	130	95	50	92 x 92	52	4 x Ø6,5
ACHIL110	1150 kgf	160	120	60	122 x 97	70	4 x Ø6,5
ACHIL130	1150 kgf	180	142	70	140 x 118	82	4 x Ø8,5
ACHIL150	1800 kgf	200	172	80	153 x 122	100	4 x Ø10,5
ACHIL160	2620 kgf	255	195	90	165 x 135	120	4 x Ø12,7
ACHIL080Z	620 kgf	120	80	40	-	42	-
ACHIL090Z	620 kgf	130	90	50	-	47	-
ACHIL110Z	1150 kgf	160	110	60	-	60	-
ACHIL130Z	1150 kgf	180	130	70	-	70	-
ACHIL150Z	1800 kgf	200	150	80	-	78	-
ACHIL160Z	2620 kgf	255	160	90	-	82	-

Type	Description
ACHIL090B	Bollard type Achilles 90, with bolt mounting

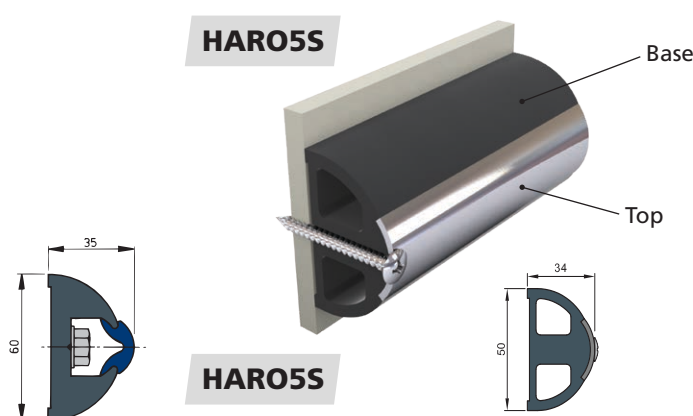
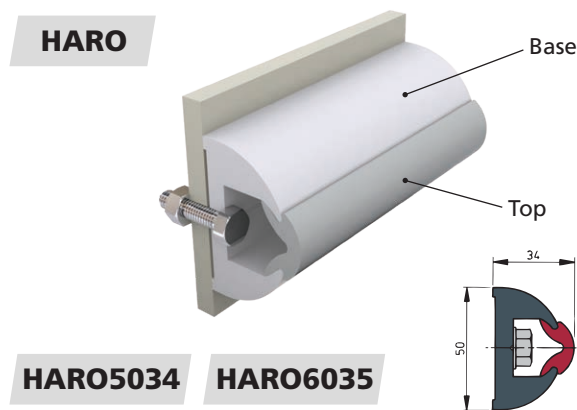
Bollard type ACHIL090B for small craft is fastened by means of two M8 bolts. Dimensions are similar to ACHIL090.

* SWL = Safe working load

Deck equipment

Rubbing strakes

Configure rubbing strakes that really suit your style and vessel. Choose the desired base profile, select your favorite top profile and cap it off with one of our stylish end caps. Personalising your boat has never been that easy!



Base profile

Type	Colour	RAL code	Dimension (mm)	Length (m)
HARO5034	Dark grey	9004	50 x 34	20
HARO5034L	Dark grey	9004	50 x 34	30
HARO50W	Signal white	9003	50 x 34	20
HARO50WL	Signal white	9003	50 x 34	30
HARO6035	Dark grey	9004	60 x 35	20
HARO6035L	Dark grey	9004	60 x 35	30
HARO60W	Signal white	9003	60 x 35	20
HARO60WL	Signal white	9003	60 x 35	30

Base profile

Type	Colour	RAL code	Dimension (mm)	Length (m)
HARO55	Dark grey	9004	50 x 34	20
HARO55L	Dark grey	9004	50 x 34	30
HARO55W	Signal white	9003	50 x 34	20
HARO55WL	Signal white	9003	50 x 34	30

Top profile PVC

Type	Colour	RAL code	Length (m)
STRIPB	Cobalt blue	5013	20
STRIPBL	Cobalt blue	5013	30
STRIPD	Dark grey	9004	20
STRIPDL	Dark grey	9004	30
STRIPG	Light grey	7035	20
STRIPGL	Light grey	7035	30
STRIPR	Wine red	3004	20
STRIPRL	Wine red	3004	30

Note: actual product colour may vary from stated RAL codes.



End caps PVC

Type	Description
EHARO50B	Set end pieces black for rubbing strake type HARO50
EHARO50W	Set end pieces white for rubbing strake type HARO50
EHARO60B	Set end pieces black for rubbing strake type HARO60
EHARO60W	Set end pieces white for rubbing strake type HARO60



Top profile stainless steel

Type	Description
HARO20S	Stainless steel inlay, 10 x 2 m lengths
HARO30S	Stainless steel inlay, 15 x 2 m lengths



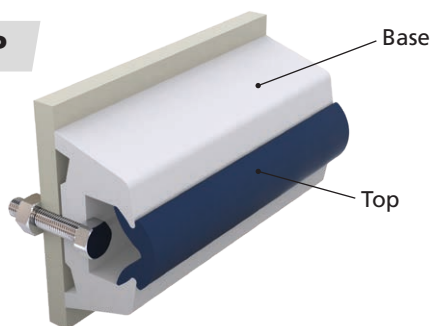
End caps stainless steel

Type	Description
HAROSE	Set of two stainless steel end pieces for rubbing strake type HARO55



Deck equipment

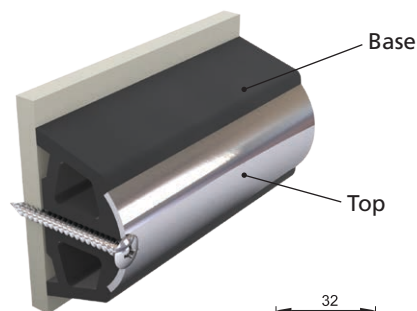
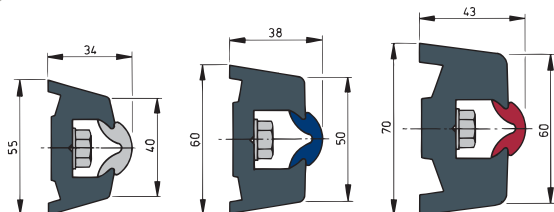
TRAP



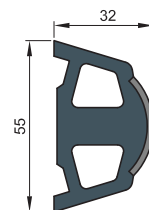
TRAP5534

TRAP6038

TRAP7043



TRAP55



Base profile

Type	Colour	RAL code	Dimension (mm)	Length (m)
TRAP5534	Dark grey	9004	55 x 34	20
TRAP5534L	Dark grey	9004	55 x 34	30
TRAP55W	Signal white	9003	55 x 34	20
TRAP55WL	Signal white	9003	55 x 34	30
TRAP6038	Dark grey	9004	60 x 38	20
TRAP6038L	Dark grey	9004	60 x 38	30
TRAP60W	Signal white	9003	60 x 38	20
TRAP60WL	Signal white	9003	60 x 38	30
TRAP7043	Dark grey	9004	70 x 43	20
TRAP7043L	Dark grey	9004	70 x 43	30
TRAP70W	Signal white	9003	70 x 43	20
TRAP70WL	Signal white	9003	70 x 43	30

Note: actual product colour may vary from stated RAL codes.

Base profile

Type	Colour	RAL code	Dimension (mm)	Length (m)
TRAP55	Dark grey	9004	55 x 34	20
TRAP55L	Dark grey	9004	55 x 34	30
TRAP55W	Signal white	9003	55 x 34	20
TRAP55WL	Signal white	9003	55 x 34	30



Top profile PVC

Type	Colour	RAL code	Length (m)
STRIPB	Cobalt blue	5013	20
STRIPBL	Cobalt blue	5013	30
STRIPD	Dark grey	9004	20
STRIPDL	Dark grey	9004	30

Type	Colour	RAL code	Length (m)
STRIPG	Light grey	7035	20
STRIPGL	Light grey	7035	30
STRIPR	Wine red	3004	20
STRIPRL	Wine red	3004	30



End caps PVC

Type	Description
ETRAP55B	Set end pieces black for rubbing strake type TRAP55
ETRAP55W	Set end pieces white for rubbing strake type TRAP55
ETRAP60B	Set end pieces black for rubbing strake type TRAP60
ETRAP60W	Set end pieces white for rubbing strake type TRAP60
ETRAP70B	Set end pieces black for rubbing strake type TRAP70
ETRAP70W	Set end pieces white for rubbing strake type TRAP70



Top profile stainless steel

Type	Description
TRAP20S	Stainless steel inlay, 10 x 2 m lengths
TRAP30S	Stainless steel inlay, 15 x 2 m lengths



End caps stainless steel

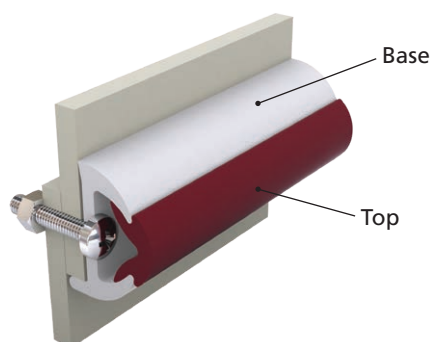
Type	Description
TRAPSE	Set of two stainless steel end pieces for rubbing strake type TRAP55



Deck equipment

Rubbing strake, ideal for GRP boats

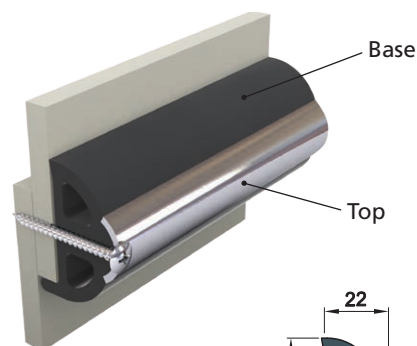
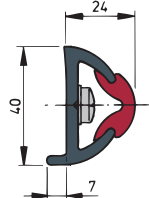
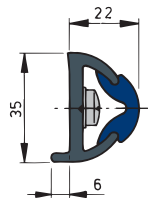
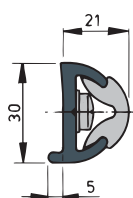
POLY



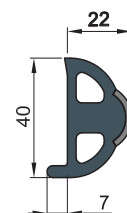
POLY3026

POLY3528

POLY4031



POLY4S



Base profile

Type	Colour	RAL code	Dimension (mm)	Length (m)
POLY3026	Dark grey	9004	30 x 26	20
POLY3026L	Dark grey	9004	30 x 26	30
POLY30W	Signal white	9003	30 x 26	20
POLY30WL	Signal white	9003	30 x 26	30
POLY3528	Dark grey	9004	35 x 28	20
POLY3528L	Dark grey	9004	35 x 28	30
POLY35W	Signal white	9003	35 x 28	20
POLY35WL	Signal white	9003	35 x 28	30
POLY4031	Dark grey	9004	40 x 31	20
POLY4031L	Dark grey	9004	40 x 31	30
POLY40W	Signal white	9003	40 x 31	20
POLY40WL	Signal white	9003	40 x 31	30

Base profile

Type	Colour	RAL code	Dimension (mm)	Length (m)
POLY4S	Dark grey	9004	40 x 31	20
POLY4SL	Dark grey	9004	40 x 31	30
POLY4SW	Signal white	9003	40 x 31	20
POLY4SWL	Signal white	9003	40 x 31	30

Top profile PVC

Type	Colour	RAL code	Length (m)
STRIPB	Cobalt blue	5013	20
STRIPBL	Cobalt blue	5013	30
STRIPD	Dark grey	9004	20
STRIPDL	Dark grey	9004	30
STRIPG	Light grey	7035	20
STRIPGL	Light grey	7035	30
STRIPR	Wine red	3004	20
STRIPRL	Wine red	3004	30

Note: actual product colour may vary from stated RAL codes.

End caps PVC

Type	Description
EPOLY40B	Set end pieces black for rubbing strake type POLY40
EPOLY40W	Set end pieces white for rubbing strake type POLY40
EPOLY30B	Set end pieces black for rubbing strake type POLY30
EPOLY30W	Set end pieces white for rubbing strake type POLY30
EPOLY35B	Set end pieces black for rubbing strake type POLY35
EPOLY35W	Set end pieces white for rubbing strake type POLY35



Top profile stainless steel

Type	Description
POLY20S	Stainless steel inlay, 10 x 2 m lengths
POLY30S	Stainless steel inlay, 15 x 2 m lengths



End caps stainless steel

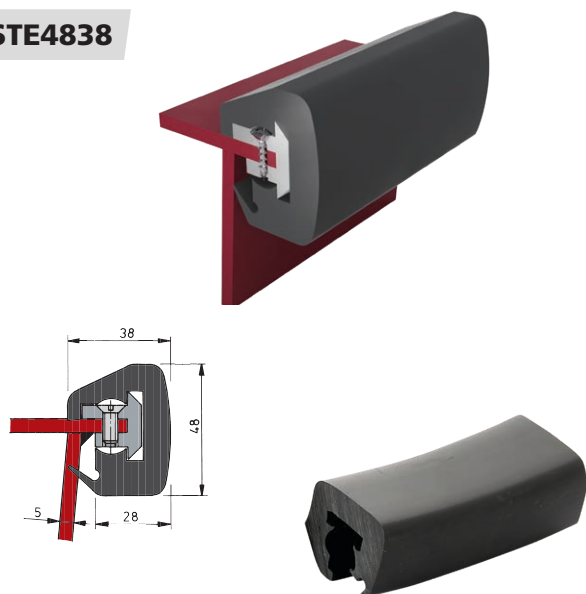
Type	Description
POLYSE	Set of two stainless steel end pieces for rubbing strake type POLY4S



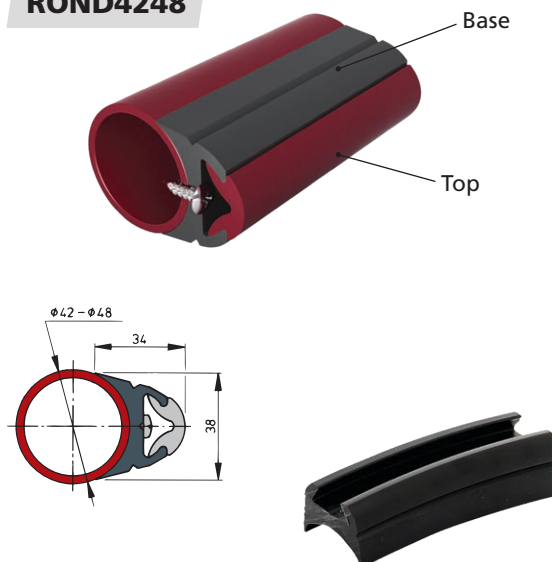
Deck equipment

Rubbing strake for steel boats

STE4838



ROND4248



Base profile

Type	Colour	RAL code	Dimension (mm)	Length (m)
STE4838	Dark grey	9004	48 x 38	20
STE4838L	Dark grey	9004	48 x 38	30

Base profile

Type	Colour	RAL code	Dimension (mm)	Length (m)
ROND4248	Dark grey	9004	Round 4248	20
ROND4248L	Dark grey	9004	Round 4248	30

Top profile PVC

Type	Colour	RAL code	Length (m)	Type	Colour	RAL code	Length (m)
STRIPB	Cobalt blue	5013	20	STRIPG	Light grey	7035	20
STRIPBL	Cobalt blue	5013	30	STRIPGL	Light grey	7035	30
STRIPD	Dark grey	9004	20	STRIPR	Wine red	3004	20
STRIPDL	Dark grey	9004	30	STRIPRL	Wine red	3004	30



Note: actual product colour may vary from stated RAL codes.

Locks and stays



UITSTEL..

Stainless steel (AISI 316) hatch adjusters

Stainless steel (AISI 316). With brackets and knob.

Type	Min. length (mm)	Max. length (mm)
UITSTELPH	202	368
UITSTELFE	261	485

Locks and stays

Gas struts

There are many applications on board where the assistance of a gas strut will reduce the effort required. For example, heavy deck hatches or locker doors. V-Equipment gas struts are specifically designed for marine use. All external parts are made of stainless steel (AISI 316) or synthetic materials and the special seals guarantee long service life. When fitted vertically, make sure that the piston rod is pointing downward.

These gas-filled cylinders are supplied complete with fixings.

In order to calculate the maximum admissible weight which can be supported, the following data is required:

F = Force of the gas strut in N/m (see table)

G = Weight of the object to be lifted in N

W = Width of the object to be lifted in mm

The calculation goes as follows:

$$\text{Force in N/m} = \frac{G \times \frac{1}{2}W}{1000}$$

Example:

The weight (G) of a hatch is 11 kg (≈ 110 N). The width (W) of the hatch is 600 mm. This means that:

$$\frac{110 \times 300}{1000} = 33 \text{ N/m is needed to hold the hatch open.}$$

In the table we find that GASSP44 delivers 28.8 N/m, which means that an additional 4.3 N/m will have to be applied by the user.

In the case of two gas struts GASSP38, $18.9 \times 2 = 37.8$ N/m is delivered by the struts. In this case the user will have to push the hatch down with a force of 4.8 N/m.



Type	Force in N	Stroke S in mm	Force (F) in N/m	Length L in mm	Length L+S in mm
GASSP25	180	74	13,3	180	254
GASSP30	135	85	11,5	220	305
GASSP38	135	140	18,9	240	380
GASSP44	180	160	28,8	280	440
GASSP51	270	205	55,3	305	510

Accessories

Marine binoculars

These binoculars are specially designed for marine applications and the materials are carefully selected for their resistance to wind and weather. The lens coatings are specifically chosen for use on the water, where bright light, glare and UV radiation should be taken into account.

Robust, lightweight binoculars

The durable, lightweight housing and the relatively compact size make the BINO1 the ideal binoculars to have at hand at all times. The BK7 prisms and multi-coated lenses deliver very sharp images and the housing is fitted with a non-slip grip.

- BK7 prisms
- Magnification: 7x; Lens diameter 50 mm
- Water repellent
- Fixed focus and central variable focus
- Flexible eyecups for use with (sun) glasses
- Non-slip grip
- Robust housing
- Includes bag and strap and caps
- Non waterproof



BINO1

High-quality, waterproof binoculars

The BAK4 prisms create the sharpest and clearest images possible in a binocular in this price range. All lenses are multi-coated for long lasting protection. The superior prisms combined with large lens diameters make these binoculars very suitable for use in difficult conditions such as twilight or bad weather. The binoculars have a robust soft touch casing and ergonomic design making them easy and stable to hold.

- Superior quality prisms (BAK4) for the brightest images
- Magnification: 7x; Lens diameter 50 mm
- Waterproof and fog-free (filled with nitrogen)
- Fixed focus and central variable focus
- Flexible eyecups for use with (sun) glasses
- Ergonomic design and non-slip grip
- Includes bag and floatation strap and caps
- Waterproof



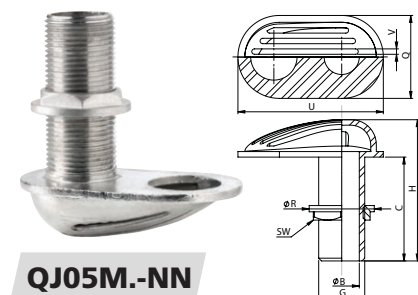
BINO2

BK7 and BAK4 refer to the type of glass used for the prisms. The prisms bend the light image inside the binoculars. BK7 is borosilicate and BAK4 barium crown glass. The type of glass affects the sharpness and clarity of the image, BAK4 produces the best images with negligible distortion, whilst BK7 can result in a very slightly distorted image.

Marine fittings, stainless steel (AISI 316)

V-Equipment marine fittings are designed for reliability and made of high grade materials. Failure of submerged fittings can cause major problems, therefore we advise the use of stainless steel (AISI 316) or bronze fittings (ISO CuPb5Sn5Zn5) for applications in which the fittings are in continuous contact with salt water.

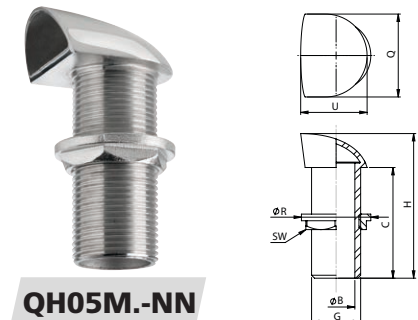
Water scoop



Type	Thread (G)*	ØB (mm)	H (mm)	C (mm)	Q (mm)	ØR (mm)	SW (mm)	U (mm)	V (mm)	Weight (kg)
QJ05MC-NN	3/8"	11	90	66	44	26	22	81	2,5	0,2
QJ05MD-NN	1/2"	12	88	65	44	32	25	81	2,5	0,3
QJ05ME-NN	3/4"	19	107	82	56	41	32	104	3	0,4
QJ05MF-NN	1"	26	105	76	60	47	38	106	3,2	0,5
QJ05MG-NN	1 1/4"	33	103	78	64	57	49	116	2,8	0,6
QJ05MH-NN	1 1/2"	39	108	82	70	72	53	133	2,5	0,7
QJ05MI-NN	2"	51	122	91	86	83	68	152	3.6	1

* According to ISO 228/1-G..B

Air vent

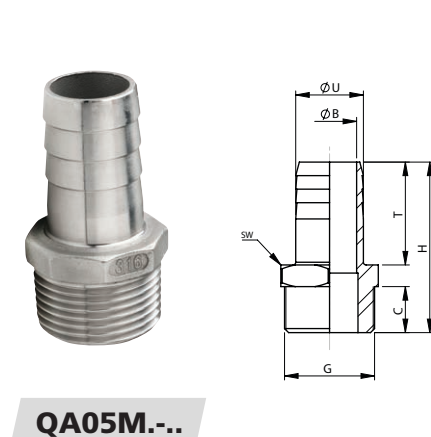


Polished surface, without flame arrester gauze.

Type	Thread (G)*	ØB (mm)	H (mm)	C (mm)	Q (mm)	ØR (mm)	SW (mm)	U (mm)	Weight (kg)
QH05MD-NN	1/2"	16	83	65	38	32	25	38	0,1
QH05ME-NN	3/4"	21	86	65	43	41	32	41	0,2
QH05MF-NN	1"	27	98	75	50	47	38	58	0,3
QH05MG-NN	1 1/4"	36	108	79	57	57	49	65	0,4
QH05MH-NN	1 1/2"	42	114	82	64	72	53	75	0,5
QH05MI-NN	2"	53	134	89	81	83	68	97	1

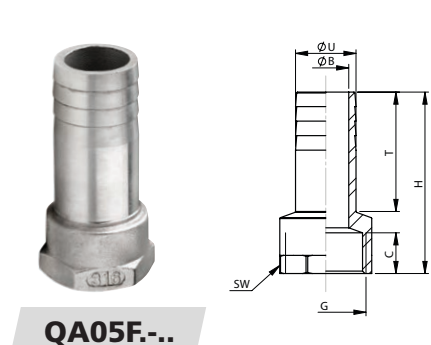
* According to ISO 228/1-G..B

Hose connector



Type	Thread (G)	ØU (mm)	ØB (mm)	H (mm)	C (mm)	T (mm)	Weight (kg)
QA05MC-15	3/8"	15	9	45	12,5	25	0,03
QA05MD-12	1/2"	12	9	50	16	26	0,04
QA05MD-15	1/2"	15	11	54	14,5	31	0,04
QA05MD-20	1/2"	20	14	58	15	32	0,06
QA05ME-20	3/4"	20	15,5	56	17	31	0,07
QA05ME-25	3/4"	25	20	63	17	37	0,09
QA05MF-25	1"	25	20,5	67	19	39,5	0,12
QA05MF-30	1"	30	25	70	19	43	0,14
QA05MG-32	1 1/4"	32	27	76	21	45	0,17
QA05MG-35	1 1/4"	35	29,5	76	20,5	45	0,20
QA05MG-38	1 1/4"	38	30	75	20,5	45	0,20
QA05MH-38	1 1/2"	38	33,5	81,5	22	48	0,25
QA05MH-45	1 1/2"	45	39	86	22	52,5	0,25
QA05MI-50	2"	50	44	98,6	26	59,5	0,41

Hose connector

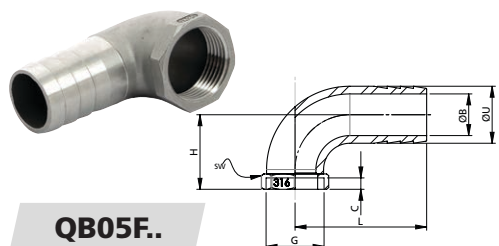


Type	Thread (G)*	ØU (mm)	ØB (mm)	H (mm)	C (mm)	T (mm)	Weight (kg)
QA05FC-15	3/8"	15	10	41	11,5	26,5	0,04
QA05FD-15	1/2"	15	10	48	15,5	27	0,06
QA05FD-20	1/2"	20	15	48	15,5	30	0,06
QA05FE-20	3/4"	20	14	56	16	34	0,09
QA05FF-25	1"	25	18,5	63	19	37,5	0,14
QA05FG-35	1 1/4"	35	28	69	21	42	0,3
QA05FG-40	1 1/4"	40	34	69	21	42	0,3
QA05FH-45	1 1/2"	45	38	76	21,5	50	0,4
QA05FI-50	2"	50	42	90,5	24	59,5	0,5

* According to ISO 228/1-G..

Marine fittings, stainless steel (AISI 316)

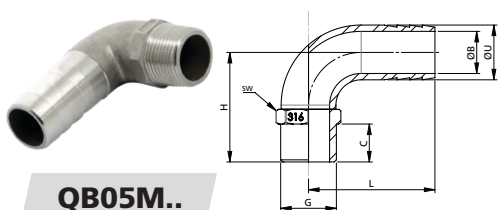
Hose connector 90°



QB05F..

Type	Thread (G)	ØU (mm)	ØB (mm)	C (mm)	L (mm)	H (mm)	SW (mm)	Weight (kg)
QB05FD-19	1/2"	19	15	11	48	21	27	0,09
QB05FE-25	3/4"	25	19	11	57	26	32	0,15
QB05FF-30	1"	30	24	13	65	30	35	0,24
QB05FH-39	1 1/2"	39	33	16	84	43	55	0,37
QB05FH-50	1 1/2"	50	43	16	84	43	55	0,54

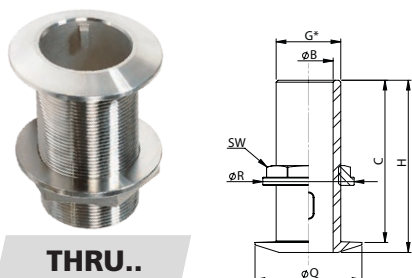
Hose connector 90°



QB05M..

Type	Thread (G)	ØU (mm)	ØB (mm)	C (mm)	L (mm)	H (mm)	SW (mm)	Weight (kg)
QB05MD-20	1/2"	20	15	15	54	39	23	0,11
QB05ME-25	3/4"	25	19	17	66	46	29	0,19
QB05MF-30	1"	30	24	18	73	51	35	0,27
QB05MG-38	1 1/4"	38	31	21	82	57	44	0,38

Thru-hull - Chamfered



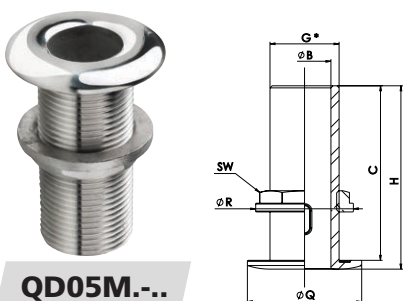
THRU..

Machined surface

Type	Thread (G)*	ØB (mm)	H (mm)	C (mm)	ØQ (mm)	ØR (mm)	SW (mm)	Weight (kg)
THRU1/2S	1/2"	15	60	52	46	34	27	0,15
THRU3/4S	3/4"	20	72	63	51	47	36	0,25
THRU1S	1"	26	79	71	54	54	42	0,35
THRU11/4S	1 1/4"	33	86	77	70	68	53	0,60
THRU11/2S	1 1/2"	39	97	88	70	72	60	0,65
THRU2S	2"	52	109	101	88	88	74	0,90

* According to ISO 228/1-G..B

Thru-hull - Rounded



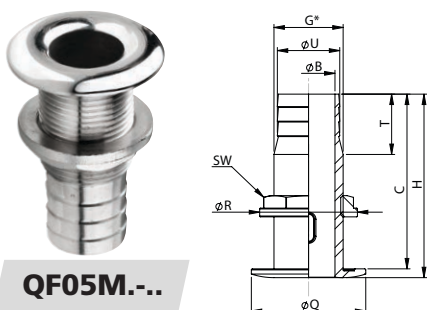
QD05M-...

Polished surface

Type	Thread (G)*	ØB (mm)	H (mm)	C (mm)	ØQ (mm)	ØR (mm)	SW (mm)	Weight (kg)
QD05MC-NN	3/8"	11	57	53	35	26	22	0,08
QD05MD-NN	1/2"	15	63	59	39	32	25	0,10
QD05ME-NN	3/4"	20	75	70	49	41	32	0,22
QD05MF-NN	1"	25	79	73	55	47	38	0,26
QD05MG-NN	1 1/4"	35	84	79	63	57	49	0,35
QD05MH-NN	1 1/2"	40	84	79	71	72	53	0,50
QD05MI-NN	2"	52	101	97	85	83	68	0,75

* According to ISO 228/1-G..B

Thru-hull - Rounded



QF05M-...

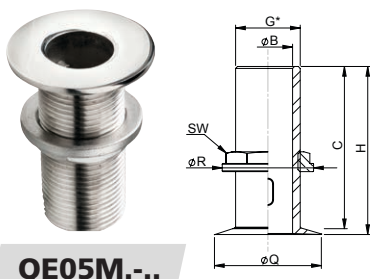
Polished surface

Type	Thread (G)*	ØU (mm)	ØB (mm)	H (mm)	C (mm)	ØQ (mm)	ØR (mm)	SW (mm)	T (mm)	Weight (kg)
QF05MC-14	3/8"	14	11	59	55	35	26	22	20	0,08
QF05MD-18	1/2"	18	15	65	60	39	32	25	24	0,11
QF05ME-23	3/4"	23	20	75	71	49	41	32	24	0,18
QF05MF-29	1"	29	25	79	73	54	47	38	30	0,24
QF05MG-38	1 1/4"	38	35	85	80	63	57	49	30	0,30
QF05MH-44	1 1/2"	44	40	87	81	71	72	53	30	0,44
QF05MI-55	2"	55	52	100	95	85	83	68	40	0,65

* According to ISO 228/1-G..B

Marine fittings, stainless steel (AISI 316)

Thru-hull - Flush


QE05M...

Polished surface

Type	Thread (G)*	ØB (mm)	H (mm)	C (mm)	ØQ (mm)	ØR (mm)	SW (mm)	Weight (kg)
QE05MC-NN	3/8"	11	54	51	32	26	22	0,07
QE05MD-NN	1/2"	15	62	58	37	32	25	0,10
QE05ME-NN	3/4"	20	72	66	48	41	32	0,20
QE05MF-NN	1"	26	76	70	55	47	38	0,25
QE05MG-NN	1 1/4"	34	79	73	64	57	49	0,35
QE05MH-NN	1 1/2"	38	81	76	70	72	53	0,50
QE05MI-NN	2"	50	89	84	81	83	68	0,75

* According to ISO 228/1-G..B

Thru-hull - Flush


QG05M...

Polished surface

Type	Thread (G)*	ØU (mm)	ØB (mm)	H (mm)	C (mm)	ØQ (mm)	ØR (mm)	SW (mm)	T (mm)	Weight (kg)
QG05MC-15	3/8"	15	11	54	51	33	26	22	23	0,07
QG05MD-18	1/2"	18	15	62	58	37	32	25	24	0,08
QG05ME-22	3/4"	22	20	71	65	48	41	32	27	0,16
QG05MF-29	1"	29	26	76	70	56	47	38	28	0,25
QG05MG-38	1 1/4"	38	34	79	73	64	57	49	30	0,30
QG05MH-43	1 1/2"	43	38	82	76	69	72	53	35	0,45
QG05MI-55	2"	55	50	89	84	81	83	68	40	0,70

* According to ISO 228/1-G..B

Ball valve


BV..

In a number of countries it is a legal requirement that the toilet or holding tank outlet can be locked to prevent discharge of black water in port. Therefore these stainless steel (AISI 316) ball valves can be padlocked if required.

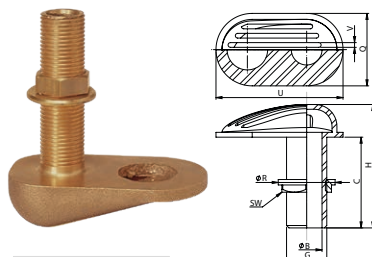
The padlock itself is not supplied. These ball valves are suitable for diesel oil, gasoline, water and sea water.

Type	Thread (G)*	Thread length (mm)	Bore	Normal Press (bar)	Working temp (°C)	Dimensions (hxbxd) (mm)	Weight (kg)
BV1/2	1/2"	14	Full Bore	69	-20 - +160	130x65x35	0,27
BV3/4	3/4"	16	Full Bore	69	-20 - +160	150x80x40	0,4
BV1	1"	19	Full Bore	69	-20 - +160	160x85x50	0,7
BV11/4	1 1/4"	19	Full Bore	69	-20 - +160	195x110x60	1,1
BV11/2	1 1/2"	20	Full Bore	69	-20 - +160	230x125x70	1,4
BV2	2"	22	49 mm	69	-20 - +160	260x140x80	2

* According to ISO 228/1-G..

Marine fittings, bronze (ISO CuPb5Sn5Zn5)

Water scoop


WCAPB..

Type	Thread (G)*	ØB (mm)	H (mm)	C (mm)	Q (mm)	ØR (mm)	SW (mm)	U (mm)	V (mm)	Weight (kg)
WCAPB1/2	1/2"	15	96	73	50	38	25	91	4	0,34
WCAPB3/4	3/4"	19	102	78	58	48	32	103	4	0,50
WCAPB1	1"	25	109	83	61	53	39	106	4	0,61
WCAPB11/4	1 1/4"	35	117	90	65	64	50	118	4	0,75
WCAPB11/2	1 1/2"	38	129	100	70	70	55	131	4	0,95

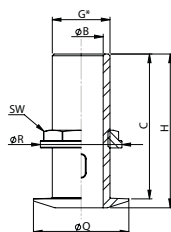
* According to ISO 228/1-G..B

Marine fittings, bronze (ISO CuPb5Sn5Zn5)

Thru-hull - Chamfered



THRU..



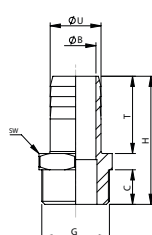
Type	Thread (G)*	ØB (mm)	H (mm)	C (mm)	ØQ (mm)	ØR (mm)	SW (mm)	Weight (kg)
THRUB1/2	1/2"	15	64	59	39	38	25	0,15
THRUB3/4	3/4"	19	70	65	48	48	32	0,23
THRUB1	1"	25	89	83	56	54	39	0,40
THRUB11/4	1 1/4"	34	82	76	65	64	49	0,45
THRUB11/2	1 1/2"	39	100	93	72	70	55	0,63

* According to ISO 228/1-G..B

Hose connector



HPB..



Type	Thread (G)*	ØU (mm)	ØB (mm)	H (mm)	C (mm)	SW (mm)	T (mm)	Weight (kg)
HPB3/8	3/8"	13	9	46	10	19	30	0,04
HPB1/2	1/2"	13	10	51	13	23	30	0,06
HPB3/4	3/4"	20	15	53	14	28	32	0,08
HPB1	1"	25	20	62	15	36	38	0,17
HPB11/4	1 1/4"	31	26	67	16	45	42	0,25
HPB11/2	1 1/2"	37	32	72	18	52	45	0,30

* According to ISO 228/1-G..B

Manifold



MAN.G..

V-Quipment fluid manifolds enable a number of pipes to be connected to a single thru-hull fitting. These manifolds are made of seawater resistant bronze (ISO CuZn35Al1). They may also be connected to an underwater skin fitting with ball valve for raw water intake. It is not recommended to connect multiple engines or generating sets to one raw water intake.

Type	Main connections (M/F) (G)*	Connections (F) (G)*
MAN2G1/2	3/4"	2 x 1/2"
MAN3G1/2	3/4"	3 x 1/2"
MAN2G3/4	1"	2 x 3/4"
MAN3G3/4	1"	3 x 3/4"

* According to ISO 228/1-G..B

Ball valve



BVB..

Ball valve, bronze body CuSn5Zn5Pb5/CC491K

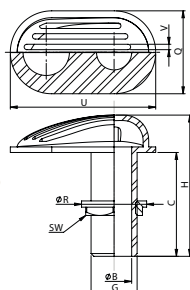
Type	Thread (G)* Female	Bore	Working Press (bar)	Working temp. (°C)	Dimensions (hxbxd) (mm)	Weight (kg)
BVB1/2	1/2"	Full Bore	32	-10 - +120	120x60x40	0,28
BVB3/4	3/4"	Full Bore	32	-10 - +120	140x70x40	0,38
BVB1	1"	Full Bore	32	-10 - +120	150x80x50	0,60
BVB11/4	1 1/4"	Full Bore	32	-10 - +120	175x98x60	0,95
BVB11/2	1 1/2"	Full Bore	32	-10 - +120	180x110x75	1,30

* According to ISO 228/1-G..

For use in (heavily polluted) salt water, we advise against using these ball valves.

Marine fittings, brass

Water scoop**



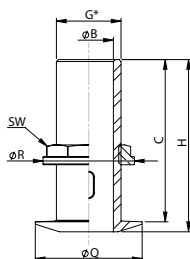
WCAP..

Type	Thread (G)*	ØB (mm)	H (mm)	C (mm)	Q (mm)	ØR (mm)	SW (mm)	U (mm)	V (mm)	Weight (kg)
WCAP1/2	1/2"	15	96	72	49	38	26	91	3	0,3
WCAP3/4	3/4"	19	103	77	58	48	32	105	3	0,5
WCAP1	1"	26	104	76	61	55	38	108	3	0,6
WCAP11/4	1 1/4"	26	104	78	61	55	38	108	3	0,7
WCAP11/2	1 1/2"	39	113	82	72	72	56	134	3	0,9
WCAP2	2"	51	126	91	89	88	68	156	3	1,5
WCAP21/2	2 1/2"	65	155	112	113	113	92	198	5	2,4
WCAP3	3"	77	134	134	129	120	105	238	5	3,9

* According to ISO 228/1-G..B

** For continuous immersion in salt water, we advise **against** the use of brass fittings.

Thru-hull - Chamfered**



DOORB..

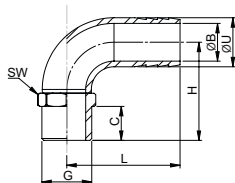
Machined surface

Type	Thread (G)*	ØB (mm)	H (mm)	C (mm)	ØQ (mm)	ØR (mm)	SW (mm)	Weight (kg)
DOORB3/8	3/8"	11	58	53	34	36	22	0,20
DOORB1/2	1/2"	15	64	58	40	39	25	0,25
DOORB3/4	3/4"	19	72	66	49	49	32	0,25
DOORB1	1"	25	77	70	56	56	40	0,35
DOORB11/4	1 1/4"	34	83	76	65	66	50	0,45
DOORB11/2	1 1/2"	39	84	78	72	72	56	0,60
DOORB2	2"	50	102	94	84	84	68	0,90
DOORB21/2	2 1/2"	65	132	123	110	111	91	1,70
DOORB3	3"	76	150	140	127	124	105	2,50

* According to ISO 228/1-G..B

** For continuous immersion in salt water, we advise **against** the use of brass fittings.

Hose connector 90°**



HPM..B

Type	Thread (G)*	ØU (mm)	ØB (mm)	H (mm)	C (mm)	SW (mm)	L (mm)	Weight (kg)
HPM1/2B	1/2"	13	8	37	15	25	48	0,08
HPM3/4B	3/4"	19	12	47	16	30	50	0,15
HPM1B	1"	25	19	58	20	37	58	0,26
HPM11/4B	1 1/4"	32	24	67	20	50	70	0,45
HPM11/2B	1 1/2"	38	29	70	21	55	77	0,57

* According to ISO 228/1-G..B

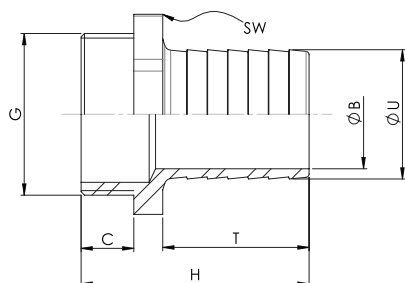
** For continuous immersion in salt water, we advise **against** the use of brass fittings.

Marine fittings, brass

Hose connector**



SLP..

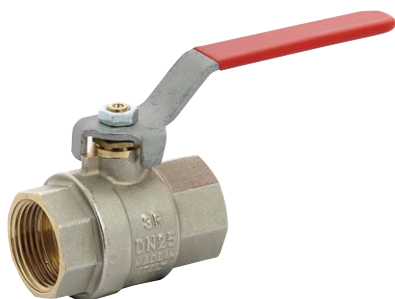


Type	Thread (G)*	ØU (mm)	ØB (mm)	H (mm)	C (mm)	SW (mm)	T (mm)	Weight (kg)
SLP1/408	1/4"	8	5	39	9	16	25	0,02
SLP1/416	1/4"	16	9	44	9	16	30	0,03
SLP3/810	3/8"	10	7	46	10	19	30	0,03
SLP3/815	3/8"	15	11	46	10	19	30	0,03
SLP1/213	1/2"	13	9	48	12	22	30	0,04
SLP1/216	1/2"	16	12	48	12	22	30	0,04
SLP1/219	1/2"	19	15	50	12	22	32	0,05
SLP3/416	3/4"	16	12	49	12	30	30	0,06
SLP3/419	3/4"	19	14	51	12	30	32	0,08
SLP3/425	3/4"	25	20	57	12	30	38	0,09
SLP125	1"	25	20	59	13	36	38	0,12
SLP132	1"	32	27	62	13	36	42	0,14
SLP11/432	1 1/4"	32	27	64	14	44	42	0,18
SLP11/438	1 1/4"	38	32	67	14	45	45	0,20
SLP11/238	1 1/2"	38	32	67	16	52	43	0,23
SLP11/245	1 1/2"	45	39	73	16	52	48	0,27
SLP251	2"	50	44	75	16	65	50	0,36
SLP21/260	2 1/2"	60	53	82	18	79	52	0,57
SLP376	3"	76	69	96	20	93	64	0,84

* According to ISO 228/1-G..B

** For continuous immersion in salt water, we advise **against** the use of brass fittings.

Ball valve**



KRAAN..

Nickel plated brass, suitable for water and diesel oil.

Type	Thread (G)* Female	Bore	Working Press (bar)	Working temp (° C)	Dimensions (hxbxd) (mm)	Weight (kg)
KRAAN1/4	1/4"	Full Bore	50	-20 - +170	105x50x24	0,11
KRAAN3/8	3/8"	Full Bore	50	-20 - +170	105x50x24	0,14
KRAAN1/2	1/2"	Full Bore	50	-20 - +170	118x58x32	0,17
KRAAN3/4	3/4"	Full Bore	30	-20 - +170	118x64x39	0,26
KRAAN1	1"	Full Bore	40	-20 - +170	154x86x48	0,40
KRAAN11/4	1 1/4"	Full Bore	40	-20 - +170	154x86x58	0,60
KRAAN11/2	1 1/2"	Full Bore	32	-20 - +170	190x100x69	0,90
KRAAN2	2"	Full Bore	32	-20 - +170	200x120x84	1,45
KRAAN21/2	2 1/2"	Full Bore	25	-20 - +170	270x145x102	3,00
KRAAN3	3"	Full Bore	16	-20 - +170	290x170x115	4,15

* According to ISO 228/1-G..

** For continuous immersion in salt water, we advise **against** the use of brass fittings.

Ball valve 3-way**



KRA..L

Nickel plated brass, suitable for water and diesel oil.

Type	Thread (G)* Female	Bore	Working Press (bar)	Working temp (° C)	Dimensions (hxbxd) (mm)	Weight (kg)
KRA1/2L	1/2"	Full Bore	40	-10 - +100	80x160x70	0,65
KRA3/4L	3/4"	Full Bore	40	-10 - +100	100x205x85	1,5
KRA1L	1"	Full Bore	40	-10 - +100	100x210x90	2,15
KRA11/4L	1 1/4"	Full Bore	40	-10 - +100	310x150x150	3,85
KRA11/2L	1 1/2"	Full Bore	40	-10 - +100	310x150x120	5,9

* According to ISO 228/1-G..

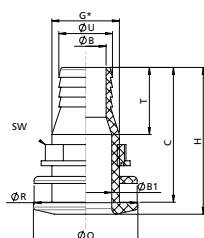
** For continuous immersion in salt water, we advise **against** the use of brass fittings.

Marine fittings, Delrin

Thru-hull - Chamfered



DOORN..



Type	Thread (G)	ØU (mm)	ØB (mm)	ØB1 (mm)	H (mm)	C (mm)	ØQ (mm)	ØR (mm)	SW (mm)	T (mm)	Weight (kg)
DOORN5/8	½"	16	10	16	76	71	42	41	24	29	0,020
DOORN3/4	¾"	19	12	18	81	75	50	49	32	32	0,032
DOORN1	1"	25	20	26	94	87	61	60	39	40	0,044
DOORN11/4	1¼"	32	24	32	98	91	68	67	48	44	0,070
DOORN11/2	1½"	38	29	37	104	96	74	73	54	47	0,088

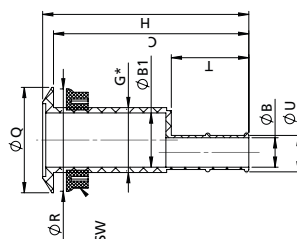
Thru-hull - Chamfered



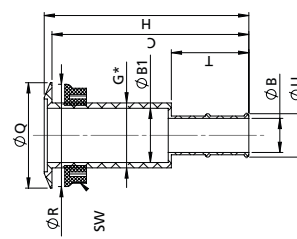
THRH..

Type	Model A / B	Thread (G)	ØU (mm)	ØB (mm)	ØB1 (mm)	H (mm)	C (mm)	ØQ (mm)	ØR (mm)	SW (mm)	T (mm)	Weight (kg)
THRH16	B	¾"	16	8,5	20	73,5	70,5	50	39,5	34	29	0,028
THRH19	B	¾"	19	11,5	20	73,5	70,5	50	-	34	29	0,028
THRH25	A	1¼"	25	19	35	133	126	68	66	57	50	0,082
THRH28	B	1¼"	28	22	35	133	126	68	66	57	50	0,090
THRH32	A	1¼"	32	25	35	133	126	68	66	57	50	0,082
THRH38	A	1½"	38	32	38	127	121	68	66	56	46	0,112

Model 'A'



Model 'B'

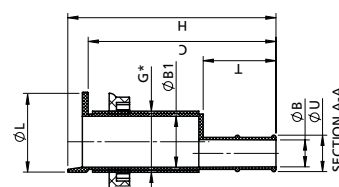
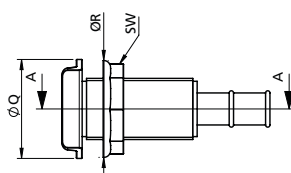


Thru-hull with L-flange (for optimal drainage)



THRH..L

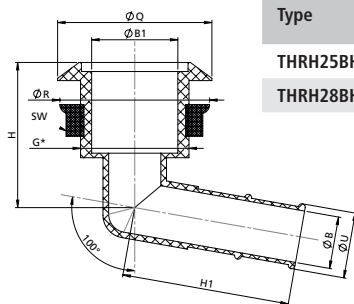
Type	Thread (G)	ØU (mm)	ØB (mm)	ØB1 (mm)	H (mm)	C (mm)	ØQ (mm)	L (mm)	ØR (mm)	SW (mm)	T (mm)	Weight (kg)
THRH16L	¾"	16	8,5	20	85	72	50	37	-	34	29	0,028
THRH19L	¾"	19	11	20	85	73	50	38	39,5	34	29	0,030
THRH25L	1¼"	25	18,5	35	142	129	68	55	66	57	50	0,080
THRH28L	1½"	28	22	35	142	129	68	55	66	56	50	0,116
THRH32L	1¼"	32	25	35	142	129	68	55	66	57	50	0,082
THRH38L	1½"	38	31,5	38	137	123	68	56	64	53	46	0,104



Marine fittings, Delrin

Thru-hull - Chamfered

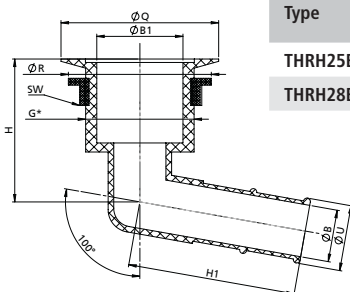
100° angled


THR..BH


Type	Thread (G)	ØU (mm)	ØB (mm)	ØB1 (mm)	H (mm)	H1 (mm)	ØQ (mm)	ØR (mm)	SW (mm)	Weight (kg)
THR25BH	1½"	25	20	38	64	74	68	66	56	0,094
THR28BH	1½"	28	20	38	64	74	68	66	56	0,094

Thru-hull - Flush

100° angled


THR..BL


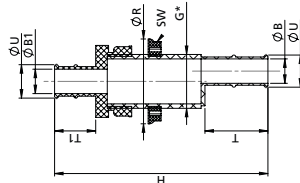
Type	Thread (G)	ØU (mm)	ØB (mm)	ØB1 (mm)	H (mm)	H1 (mm)	ØQ (mm)	ØR (mm)	SW (mm)	Weight (kg)
THR25BL	1½"	25	20	38	63	74	69,5	63	53	0,090
THR28BL	1½"	28	20	38	63	74	69,5	63	53	0,090

Bulkhead connectors

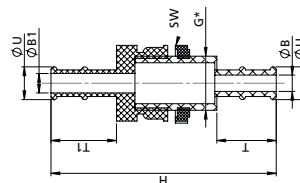

BULKH..

Type	Model A / B	Thread (G)	ØU (mm)	ØB (mm)	ØB1 (mm)	H (mm)	ØQ (mm)	ØR (mm)	SW (mm)	T (mm)	T1 (mm)	Weight (kg)
BULKH16	B	¾"	16	8	9,5	110	50	-	34	29	32	0,040
BULKH19	A	¾"	19	11	13	113	50	40	34	29	32	0,040
BULKH25	A	1¼"	25	19	19	166	68	66	57	49	32	0,108
BULKH28	B	1¼"	28	22	22	175	68	66	57	49	32	0,114
BULKH32	A	1¼"	32	25	25	166	68	68	57	49	32	0,116
BULKH38	A	1½"	38	31	32	162	68	63	53	46	32	0,144

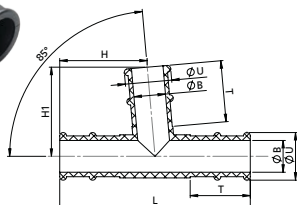
Model 'A'



Model 'B'



T-Piece

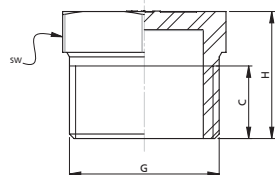

TPC..


Synthetic equal T-piece. Suitable for temperatures up to +83 °C.

Type	ØU (mm)	ØB (mm)	H (mm)	H1 (mm)	L (mm)	T (mm)	Weight (kg)
TPC16	16	10,5	39	40	84	26	0,016
TPC19	19	14	39	40	84	26	0,016
TPC25	25	17	54	52	99	32	0,034
TPC28	28	21	54	52	99	32	0,032

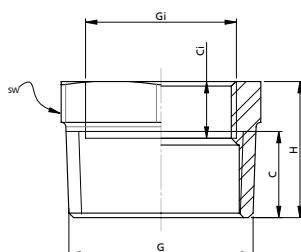
Marine fittings, stainless steel (AISI 316)

End plug


QS05020.


Type	Thread (G)	C (mm)	H (mm)	SW (mm)	Weight (kg)
QS050203	3/8"	13	18,5	18	0,020
QS050204	1/2"	14,5	20,5	23	0,028
QS050205	3/4"	17	25	28	0,052
QS050206	1"	18	27	36	0,09
QS050207	1 1/4"	22	31	44	0,122
QS050208	1 1/2"	22	31	50	0,162
QS050209	2"	25	34	63	0,244

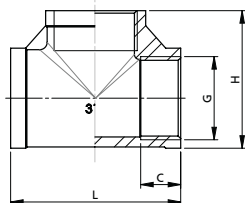
Bushing hex


QS05060.


Type	Thread (G)*	C (mm)	H (mm)	Thread (Gi)*	Ci (mm)	SW (mm)	Weight (kg)
QS050603	3/8"	15	21	1/4"	8	19	0,02
QS050604	1/2"	16	23	3/8"	9	22	0,026
QS050605	3/4"	18	26	1/2"	10	28	0,050
QS050606	1"	18,5	27	3/4"	11	35	0,075
QS050607	1 1/4"	20,5	30	1"	13	44	0,115
QS050608	1 1/2"	22	31	1 1/4"	14	50	0,120
QS050609	2"	25	34	1 1/2"	13	63	0,20

* According to ISO 228/1-G..

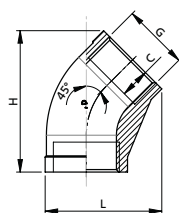
T-Piece


QS05030.


Type	Thread (G)*	C (mm)	L (mm)	H (mm)	Weight (kg)
QS050303	3/8"	10	42	31	0,05
QS050304	1/2"	11,5	50	40,7	0,105
QS050305	3/4"	12,5	61	46	0,155
QS050306	1"	16	70	54	0,249
QS050307	1 1/4"	15	80	65	0,294
QS050308	1 1/2"	18	95	69	0,492
QS050309	2"	18,5	108	81	0,677

* According to ISO 228/1-G..

Elbow 45°


QS05070.


Type	Thread (G)*	C (mm)	L (mm)	H (mm)	Weight (kg)
QS050703	3/8"	10	24		0,039
QS050704	1/2"	12	38	44	0,07
QS050705	3/4"	12	29	54	0,108
QS050706	1"	13	32		0,173
QS050707	1 1/4"	15	36	70	0,261
QS050708	1 1/2"	17	40		0,336

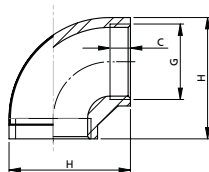
* According to ISO 228/1-G..

Marine fittings, stainless steel (AISI 316)

Elbow 90°



QS05040.



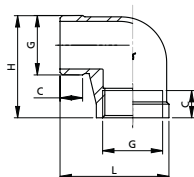
Type	Thread (G)*	C (mm)	H (mm)	Weight (kg)
QS050403	3/8"	10	42	0,043
QS050404	1/2"	10	38	0,06
QS050405	3/4"	12	45	0,11
QS050406	1"	13	68	0,18
QS050407	1 1/4"	15	65	0,22
QS050408	1 1/2"	17	71	0,30
QS050409	2"	17,5	88	0,47

* According to ISO 228/1-G..

Elbow 90°

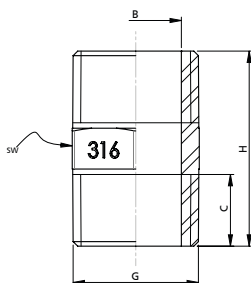


QS05010.



Type	Thread (G)	C (mm)	L (mm)	H (mm)	Weight (kg)
QS050103	3/8"	12	32	22	0,04
QS050104	1/2"	13	48	38	0,05
QS050105	3/4"	13	38	32	0,09
QS050106	1"	18	73	56	0,194
QS050107	1 1/4"	20	84	61	0,284
QS050108	1 1/2"	15	60	52	0,31
QS050109	2"	24	89	108	0,670

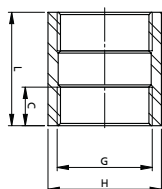
Nipple



Type	Thread (G)	C (mm)	H (mm)	B (mm)	SW (mm)	Weight (kg)
QS050503	3/8"	12	30	11	18	0,028
QS050504	1/2"	15	38	15,5	22	0,044
QS050505	3/4"	17	41	20	27	0,070
QS050506	1"	19	46	26	36	0,108
QS050507	1 1/4"	20	49	35	44	0,134
QS050508	1 1/2"	21	49	41	50	0,158
QS050509	2"	25	64	51	63	0,340

QS05050.

Socket



Type	Thread (G)*	C (mm)	L (mm)	H (mm)	Weight (kg)
QS050803	3/8"	12	30	21	0,03
QS050804	1/2"	16	35	27	0,07
QS050805	3/4"	17	35	32	0,07
QS050806	1"	15	44	41	0,14
QS050807	1 1/4"	15	45	48	0,14
QS050808	1 1/2"	18	54	56	0,27
QS050809	2"	18	63	68	0,39

* According to ISO 228/1-G..

QS05080.

Marine fittings, stainless steel (AISI 316)

Breather nipples

The breathing capacity fulfils the CE requirements. Provided with an easily cleaned stainless steel (AISI 316) gauze, which functions as a flame arrester.

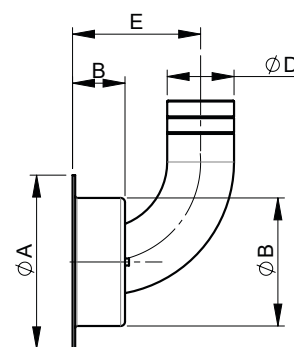
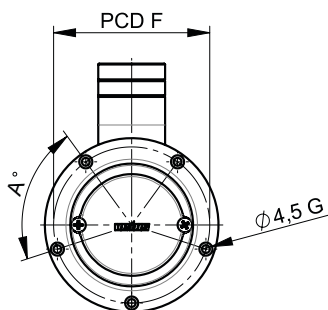
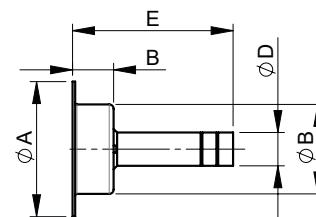
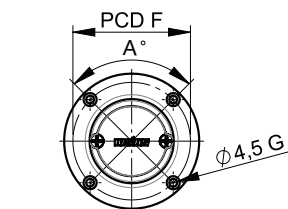
AB..S



AB..SL



AB..B



Type	Shape	Material	ØD (mm)	ØA (mm)	PCD F (mm)	A° (mm)	# G	Cut-out Ø (mm)	ØB (mm)	Max. wall thickness (mm)	B (mm)	E (mm)
AB16S	Straight	AISI 316	16	64	54	120	3	39,5	38	N/A	18	48
AB16B	Angled	AISI 316	16	64	54	120	3	39,5	38	30	18	47
AB19S	Straight	AISI 316	19	77	67	90	4	54	51	N/A	23,4	53,4
AB19SL	Straight	AISI 316	19	77	67	90	4	54	51	N/A	23,4	91,5
AB19B	Angled	AISI 316	19	77	67	90	4	54	51	31	23,4	53
AB25B	Angled	AISI 316	25	77	67	90	4	54	51	31	23,4	53
AB38B	Angled	AISI 316	38	99	89	72	5	76	73	42	29,9	73

Air vent nipples for tanks

Suitable for Ø 16 mm internal diameter hose. Straight or 90° angled. Provided with a gauze, which functions as a flame arrester.



ST04HS



ST04S



ST05HS



ST05S

Type	Shape	Material	Hose Ø (mm)	Cut-out Ø (mm)	Wall thickness (mm)
ST04HS	Angled	AISI 316	16	20	0 - 10
ST04S	Straight	AISI 316	16	20	0 - 10
ST05HS	Angled	AISI 316	16	35	10 - 30
ST05S	Straight	AISI 316	16	35	10 - 30

Marine fittings



CAP.38S



CAP.51S

Deck entries, stainless steel (AISI 316)

These stainless steel (AISI 316) deck entries are also available with a winch handle socket (item codes ending with a 'W'). With high-gloss polished watertight cover.

Cover inscriptions:

- Water
- Unleaded gasoline
- Diesel fuel
- 'Pump-out' icon (WC)



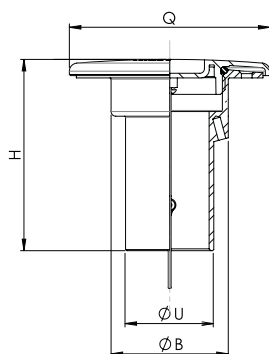
CAPWC38S



CAP..W



KEY1

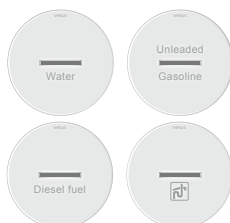


Type	Cap (Q) Ø (mm)	Type	Liquid	Hose (U) Ø (mm)	Cut-out (B) Ø (mm)	Length (H) (mm)
CAPW38S	86,5	Slotted	Water	38	51	82,5
CAPW38W	86,5	Winch	Water	38	51	82,5
CAPG38S	86,5	Slotted	Unleaded Gasoline	38	51	82,5
CAPG38W	86,5	Winch	Unleaded Gasoline	38	51	82,5
CAPF38S	86,5	Slotted	Diesel fuel	38	51	82,5
CAPF38W	86,5	Winch	Diesel fuel	38	51	82,5
CAPWC38S*	86,5	Slotted	WC (pump out)	38	51	126,5
CAPWC38W*	86,5	Winch	WC (pump out)	38	51	126,5
CAPF51S	92,5	Slotted	Diesel fuel	51	57	82,5
CAPF51W	92,5	Winch	Diesel fuel	51	57	82,5

* Fullfills the requirements of ISO 8099:2001

Deck entry key

Key for slotted deck entries. Also suitable for deck entries with an octagonal recess.



Deck entries, chromium plated brass



FCAPDF38



FCAPDF50

Type	Cap Ø (mm)	Type	Liquid	Hose Ø (mm)	Cut-out Ø (mm)	Length (mm)
FCAPDF38	85	Ring	Diesel fuel	38	57	80
FCAPDF50	85	Ring	Diesel fuel	50	57	80
CAPWC38*	88	Pop-out	Waste (pump out)	38	50	115
FCAPWATER	85	Ring	Water	38	57	80

* Fullfills the requirements of ISO 8099:2001



CAPWC38



FCAPWATER

Marine fittings



HCSM

Type	Description	Band width (mm)	Max. torque (Nm)	Max. pressure (Bar)
HCSM08	Hose clamp D8-16mm	9	3	45
HCSM12	Hose clamp D12-22mm	9	3	45
HCSM16	Hose clamp D16-27mm	12	5	45
HCSM20	Hose clamp D20-32mm	12	6	45
HCSM25	Hose clamp D25-40mm	12	6	40
HCSM32	Hose clamp D32-50mm	12	6,5	35
HCSM40	Hose clamp D40-60mm	12	6,5	30

Hose clamps HCSM

This clamp uses an AISI 430 stainless steel band and housing with a zinc-plated steel screw. The band has a smooth underside and rounded edges to avoid damage to the hose.

Key Features:

- W2 (AISI 430 stainless steel + zinc-plated screw)
- Moderate corrosion resistance (72h salt spray)
- Smooth edges to protect hose

Type	Description	Band width (mm)	Max. torque (Nm)	Max. pressure (Bar)
HCSM50	Hose clamp D50-70 mm	12	7,5	25
HCSM60	Hose clamp D60-80 mm	12	7,5	20
HCSM70	Hose clamp D70-90 mm	12	7,5	17
HCSM90	Hose clamp D90-110 mm	12	7,5	12
HCSM110	Hose clamp D110-130 mm	12	7,5	8
HCSM130	Hose clamp D130-150 mm	12	7,5	6
HCSM150	Hose clamp D150-170 mm	12	7,5	4



HCS

Type	Description	Band width (mm)	Max. torque (Nm)	Max. pressure (Bar)
HCS08	Hose clamp D8-16mm	9	3	45
HCS12	Hose clamp D12-22mm	9	3	45
HCS16	Hose clamp D16-27mm	12	5	45
HCS20	Hose clamp D20-32mm	12	6	45
HCS25	Hose clamp D25-40mm	12	6	40
HCS32	Hose clamp D32-50mm	12	6,5	35
HCS40	Hose clamp D40-60mm	12	6,5	30

Hose clamps HCS

This clamp is made entirely from high-grade AISI 316 stainless steel, offering excellent corrosion resistance. The smooth underside and rounded band edges protect hoses from damage. Its compact design and strong screw make it easy to install and very reliable.

Key Features:

- W5 (AISI 316 stainless steel)
- Extreme corrosion resistance (1000h salt spray)
- Smooth edges to protect the hose

Type	Description	Band width (mm)	Max. torque (Nm)	Max. pressure (Bar)
HCS50	Hose clamp D50-70mm	12	7,5	25
HCS60	Hose clamp D60-80mm	12	7,5	20
HCS75	Hose clamp D70-90mm	12	7,5	17
HCS90	Hose clamp D90-110mm	12	7,5	12
HCS110	Hose clamp D110-130mm	12	7,5	8
HCS130	Hose clamp D130-150mm	12	7,5	7
HCS150	Hose clamp D150-170mm	12	7,5	7

Marine fittings



HCHD

Type	Description	Band width (mm)	Max. torque (Nm)	Max. pressure (Bar)
HCHD034	Hose clamp D34-37mm, HD	20	13	40
HCHD037	Hose clamp D37-40mm, HD	20	13	40
HCHD040	Hose clamp D40-43mm, HD	20	13	40
HCHD043	Hose clamp D43-47mm, HD	20	16	36
HCHD047	Hose clamp D47-51mm, HD	20	16	36
HCHD051	Hose clamp D51-55mm, HD	20	16	36
HCHD055	Hose clamp D55-59mm, HD	20	16	36
HCHD059	Hose clamp D59-63mm, HD	20	16	36
HCHD063	Hose clamp D63-68mm, HD	20	16	36
HCHD068	Hose clamp D68-73mm, HD	25	30	28
HCHD073	Hose clamp D73-79mm, HD	25	30	28
HCHD079	Hose clamp D79-85mm, HD	25	30	28
HCHD085	Hose clamp D85-91mm, HD	25	30	20
HCHD091	Hose clamp D91-97mm, HD	25	30	20

Hose clamps heavy duty HCHD

A clamp with a swiveling bridge that makes installation easy, even in tight spaces. You don't need to remove the hose to mount it. Suitable for applications where moderate corrosion resistance is acceptable.

Key Features:

- W2 (Stainless Steel AISI 430 + Zinc-Coated Screw)
- Reusable and strong
- Moderate corrosion resistance (72h salt spray)

Type	Description	Band width (mm)	Max. torque (Nm)	Max. pressure (Bar)
HCHD097	Hose clamp D97-104mm, HD	25	30	20
HCHD104	Hose clamp D104-112mm, HD	25	30	12
HCHD112	Hose clamp D112-121mm, HD	25	30	12
HCHD121	Hose clamp D121-130mm, HD	25	30	12
HCHD130	Hose clamp D130-140mm, HD	28	45	9
HCHD140	Hose clamp D140-150mm, HD	28	45	9
HCHD150	Hose clamp D150-162mm, HD	28	45	9
HCHD162	Hose clamp D162-174mm, HD	28	45	6
HCHD174	Hose clamp D174-187mm, HD	28	45	6
HCHD187	Hose clamp D187-200mm, HD	28	45	6
HCHD200	Hose clamp D200-213mm, HD	28	45	3
HCHD213	Hose clamp D213-226mm, HD	28	45	3
HCHD260	Hose clamp D265-278mm, HD	30	45	3
HCHD300	Hose clamp D317-330mm, HD	30	45	3



HCHDS

Type	Description	Band width (mm)	Max. torque (Nm)	Max. pressure (Bar)
HCHDS034	Hose clamp D34-37mm, HD	20	13	35
HCHDS037	Hose clamp D37-40mm, HD	20	13	35
HCHDS040	Hose clamp D40-43mm, HD	20	13	35
HCHDS043	Hose clamp D43-47mm, HD	20	16	35
HCHDS047	Hose clamp D47-51mm, HD	20	16	30
HCHDS051	Hose clamp D51-55mm, HD	20	16	30
HCHDS055	Hose clamp D55-59mm, HD	20	16	30
HCHDS059	Hose clamp D59-63mm, HD	20	16	30
HCHDS063	Hose clamp D63-68mm, HD	20	16	30
HCHDS068	Hose clamp D68-73mm, HD	25	30	20
HCHDS073	Hose clamp D73-79mm, HD	25	30	20
HCHDS079	Hose clamp D79-85mm, HD	25	30	20
HCHDS085	Hose clamp D85-91mm, HD	25	30	15
HCHDS091	Hose clamp D91-97mm, HD	25	30	15

Hose clamps heavy duty HCHDS

It resists corrosion in marine environments. Its swiveling bridge allows easy installation without removing the hose. It can be reopened and reused many times.

Key Features:

- W5 (full stainless steel AISI 316)
- Extreme corrosion resistance (1000h salt spray)
- Reusable and durable

Type	Description	Band width (mm)	Max. torque (Nm)	Max. pressure (Bar)
HCHDS097	Hose clamp D97-104mm, HD	25	30	15
HCHDS104	Hose clamp D104-112mm, HD	25	30	10
HCHDS112	Hose clamp D112-121mm, HD	25	30	10
HCHDS121	Hose clamp D121-130mm, HD	25	30	10
HCHDS130	Hose clamp D130-140mm, HD	28	45	6
HCHDS140	Hose clamp D140-150mm, HD	28	45	6
HCHDS150	Hose clamp D150-162mm, HD	28	45	6
HCHDS162	Hose clamp D162-174mm, HD	28	45	3
HCHDS174	Hose clamp D174-187mm, HD	28	45	3
HCHDS187	Hose clamp D187-200mm, HD	28	45	3
HCHDS200	Hose clamp D200-213mm, HD	28	45	3
HCHDS213	Hose clamp D213-226mm, HD	28	45	3
HCHDS260	Hose clamp D265-278mm, HD	30	45	3
HCHDS300	Hose clamp D317-330mm, HD	30	45	3

Pumps


BLPM020

Manual membrane pump

A high quality membrane pump suitable for pumping/ transferring bilge water, seawater or diesel.

- Synthetic housing, metallic parts of stainless steel (AISI 316)
- Easy to remove clamping ring for maintenance and or head rotation
- Horizontal or vertical mounting
- Self-priming

Suitable for boats up to 12 m (ISO 15083).

For all suitable hoses see page 466 of the catalogue.

Type	Suction lift (m)	Discharge head (m)	Capacity L/stroke	Hose connection Ø (mm)	Advised hose type
BLPM020	3	4	0,44	32	DWHOSE32B


BLP..

Bilge pump

Submersible bilge pumps (IP67). Detachable strainer acts as screw-down base. Durable snap connection for easy cleaning. Double seals for long lifetime. Internal components are made from stainless steel (AISI 316). Comes with 1.2 m cable. For all suitable hoses see page 466 of the catalogue.

Type	Voltage (DC)	Current A @ 13,6 V	Capacity L/min @ 0 m	Max. head (m)	Dimensions Ø x H (mm)	Hose connection Ø (mm)	Advised hose type
BLP12500	12	3	40	4	90 x 120	19	DWHOSE19B
BLP121000	12	3	50	4	90 x 120	28,5	DWHOSE28B
BLP122000	12	6	110	4	120 x 150	28,5	DWHOSE28B
BLP123000	12	9	160	5	130 x 180	32	DWHOSE32B

Type	Voltage (DC)	Current A @ 27,1 V	Capacity L/min @ 0 m	Max. head (m)	Dimensions Ø x H (mm)	Hose connection Ø (mm)	Advised hose type
BLP24500	24	1,5	40	4	90 x 120	19	DWHOSE19B
BLP242000	24	3	111	4	120 x 150	28,5	DWHOSE28B
BLP243000	24	4,5	147	5	130 x 180	32	DWHOSE32B


BLSWITCH

Level switch

This switch activates the pump when the bilge water level reaches 50 mm.

- Made from high quality synthetic material
- Suitable for 12 and 24 VDC
- Suitable for fresh and salt water
- Comes with 1 m cable

Type	Voltage (DC)	Max. current (A)	Total width (mm)	Total length (mm)	Cable length (m)
BLSWITCH	12 / 24	15	70	117	1


BLPS..

Stirrup type pump

Sturdy single action plunger pump suitable for fresh water, seawater or other fluids normally present in the bilge.

- Material: durable synthetic (PP)
- Temperature resistant to max. 60° Celsius
- Ergonomically shaped handle
- Self priming
- Hose length: 980 mm

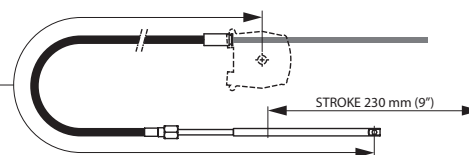
Type	Hose connection Ø (mm)	Stroke length (mm)	Capacity L/stroke
BLPS04	26,5	280	0,4
BLPS07	26,5	530	0,7

Outboard

Cable steering

The cable length refers to total length of the inner cable. The outer jacket of the cable is about 75 cm (30") shorter. When selecting the right cable, always round up to the next size.

Cable length:



LCSKIT..

Light series cable steering kit

Cable steering kit including: Helm, straight bezel, cable and spent core tube. The helm is equipped as standard with a friction brake. Fitted with a $\varnothing \frac{3}{4}$ " (19 mm) shaft, tapered 1:12.

Available with cable length:
7 to 16 ft (213 to 488 cm), in steps of 1 ft.

- Wheel turns: 2,6
- Max. wheel \varnothing : 406 mm
- Min. bend radius 302 mm

For craft up to 5 m.

Type	Max. engine output	Cable length
LCSKIT7	55 HP (40 kw)	7 ft (213.5 cm)
LCSKIT8	55 HP (40 kw)	8 ft (244 cm)
LCSKIT9	55 HP (40 kw)	9 ft (274.5 cm)
LCSKIT10	55 HP (40 kw)	10 ft (305 cm)
LCSKIT11	55 HP (40 kw)	11 ft (335.5 cm)

Type	Max. engine output	Cable length
LCSKIT12	55 HP (40 kw)	12 ft (366 cm)
LCSKIT13	55 HP (40 kw)	13 ft (396.5 cm)
LCSKIT14	55 HP (40 kw)	14 ft (427 cm)
LCSKIT15	55 HP (40 kw)	15 ft (457.5 cm)
LCSKIT16	55 HP (40 kw)	16 ft (488 cm)



HZFKIT..

Zero feedback cable steering kit

Zero torque high performance cable steering kit including: Zero feedback helm, straight bezel, high performance cable and spent core tube. Smooth and durable operation due to planetary gear design. Unique design eliminates any torque coming from the steering cable, creating an effortless ride. A 20° Bezel kit can be ordered separately if required. Fitted with a $\varnothing \frac{3}{4}$ " (19 mm) shaft, tapered 1:12.

A.B.Y.C., N.M.M.A., I.M.C.I. and CE approved.

Available with cable length:
8 to 20 ft (244 to 610 cm), in steps of 1 ft.

- Wheel turns: 3,8
- Max. wheel \varnothing : 406 mm
- Min. bend radius 200 mm

For craft up to 7 m.

Type	Max. engine output	Cable length
HZFKIT8	125 HP (90 kw)	8 ft (244 cm)
HZFKIT9	125 HP (90 kw)	9 ft (274.5 cm)
HZFKIT10	125 HP (90 kw)	10 ft (305 cm)
HZFKIT11	125 HP (90 kw)	11 ft (335.5 cm)
HZFKIT12	125 HP (90 kw)	12 ft (366 cm)
HZFKIT13	125 HP (90 kw)	13 ft (396.5 cm)
HZFKIT14	125 HP (90 kw)	14 ft (427 cm)

Type	Max. engine output	Cable length
HZFKIT15	125 HP (90 kw)	15 ft (457.5 cm)
HZFKIT16	125 HP (90 kw)	16 ft (488 cm)
HZFKIT17	125 HP (90 kw)	17 ft (518.5 cm)
HZFKIT18	125 HP (90 kw)	18 ft (549 cm)
HZFKIT19	125 HP (90 kw)	19 ft (579.5 cm)
HZFKIT20	125 HP (90 kw)	20 ft (610 cm)

Outboard

Cable steering options



Bezel kit

To tilt the helm at a 20° angle for optimum steering position. 20° Bezel kit for zero feedback cable steering helm. Weight 0,3 kg.

Type	Description
HB20	High performance series 20° bezel kit



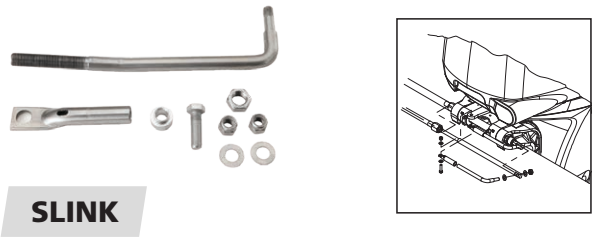
Quick release balljoint

Quick release balljoint for steering cables. For L and H series. Weight 0,3 kg.

Type	Description
SQBALL	H and L series, steering cable quick release balljoint

Cable steering mounting sets

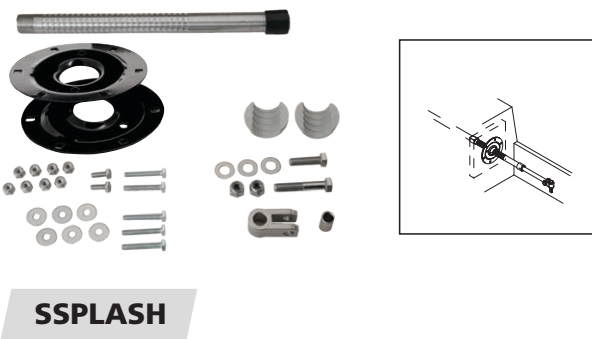
To complete the steering system to your requirements, please select one of the mounting sets below.



Universal link arm

When outboard motor acts as cable mount. For L and H series.

Type	Description
SLINK	Steering cable universal link arm

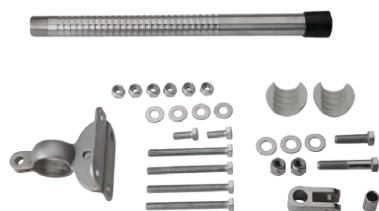


Splashwell mount

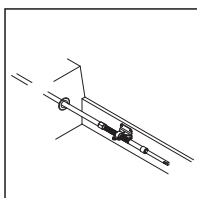
Splashwell cable support mount for L and H series.

Type	Flange Ø (mm)	Weight (kg)
SSPLASH	125	0,75

Outboard



STRANS



Transom mount

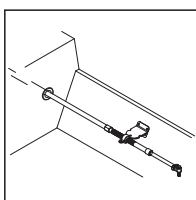
Transom support mount (short) for L and H series.

Type	Length* (mm)	Angle	Weight (kg)
STRANS	51	90°	0,7

*Cable core to transom



STRANL



Transom mount

Transom support mount (long) for L and H series.

Type	Length* (mm)	Angle	Weight (kg)
STRANL	102	67°	0,8

*Cable core to transom

Steering cable only

Available for light series and high performance series.
Length between 5 and 20 feet (153 to 610 cm), in steps of 1 ft.
Max. bend radius: 200 mm.



HCAB..

Steering cable

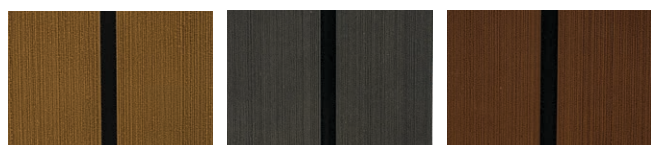
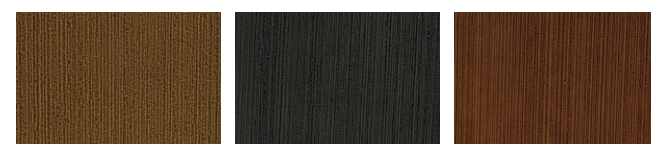
For zero feedback series: HCAB (max. 125 HP / 90 kw)

Type	Cable length	Type	Cable length
HCAB5	5 ft (152,5 cm)	HCAB13	13 ft (396,5 cm)
HCAB6	6 ft (183 cm)	HCAB14	14 ft (427 cm)
HCAB7	7 ft (213,5 cm)	HCAB15	15 ft (457,5 cm)
HCAB8	8 ft (244 cm)	HCAB16	16 ft (488 cm)
HCAB9	9 ft (274,5 cm)	HCAB17	17 ft (518,5 cm)
HCAB10	10 ft (305 cm)	HCAB18	18 ft (549 cm)
HCAB11	11 ft (335,5 cm)	HCAB19	19 ft (579,5 cm)
HCAB12	12 ft (366 cm)	HCAB20	20 ft (610 cm)

Materials

Non-slip deck covering

The closed-cell structure EVA foam has an insulating effect which makes it comfortable and is specially designed for nautical purposes. NOSKID easy-to-install-self-adhesive (3M) plates offer incredibly high non-slip properties under all circumstances, even in wet feet! Insulating, comfortable, highly resistant against sunlight and seawater and maintenance-free; this is how high grip deck material should be. The NOSKID series comes in three different colours and is available from stock.


NOSKIDSBI
NOSKIDSBL
NOSKIDSTE

NOSKIDFBI
NOSKIDFBL
NOSKIDFTE


Type	Description	Thickness (mm)	Length (mm)	Width (mm)	Teak width (mm)	Spacing (mm)
NOSKIDSBI	non skid deck in birch teak with caulking look	6	2400	900	49	7
NOSKIDSBL	non skid deck in black teak with caulking look	6	2400	900	49	7
NOSKIDSTE	non skid deck in natural teak with caulking look	6	2400	900	49	7
NOSKIDFBI	non skid full deck in birch teak look, self-adhesive	6	2400	900	49	-
NOSKIDFBL	non skid full deck in black teak look, self-adhesive	6	2400	900	49	-
NOSKIDFTE	non skid full deck in natural teak look, self-adhesive	6	2400	900	49	-

Poly-wood

This material is ideal for the fabrication of all sorts of components on board. It is completely resistant against sunlight and water and is tough and durable. It is easy to work with using common woodworking machinery and tools. The product is made of solid synthetic and is not laminated. Poly-wood cannot rot, splinter, crack open or show discolouration and is therefore particularly suitable for outdoor use in all weather conditions.

Available colour:

- White

Type	Dimension (mm)	Thickness (mm)
SH06WXSH	1210 x 600	6
SH12WXSH	1210 x 600	12
SH18WXSH	1210 x 600	18
SH06WSH	1220 x 800	6
SH12WSH	1220 x 800	12
SH18WSH	1220 x 800	18
SH06WH	1220 x 2440	6
SH12WH	1220 x 2440	12
SH18WH	1220 x 2440	18

Each sheet is protected by a synthetic masking. We recommend that you remove the masking when the job is done; not before.


SH..WSH
SH..WH
SH..WXSH

Materials



SC



WDC2P

Watertight plug and socket

Watertight plugs and sockets are available in two versions: For cable with a cross sectional area up to $0,75 \text{ mm}^2$ (AWG18) max. 3 Amp. or a larger model for cables of up to $2,5 \text{ mm}^2$ (AWG12) max. 5 Amp. A rubber gasket and a synthetic cover are standard supply.

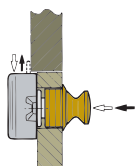
Material:

- Chrome plated brass

Type	Description
SC29	Watertight plug and socket with 2 pins, chromium plated brass
SC33	Watertight plug and socket with 3 pins, chromium plated brass
SC44	Watertight plug and socket with 4 pins, chromium plated brass
SC29L	Watertight plug and socket with 2 pins, large model, chromium plated brass
SC33L	Watertight plug and socket with 3 pins, large model, chromium plated brass
SC44L	Watertight plug and socket with 4 pins, large model, chromium plated brass
WDC2P	Watertight deck connector, 2 pins



LOCKDRC



LOCKDRM

Push-button lock (interior)

Made of synthetic with chromium or brass finish push-button.

Dimensions:

- $78 \times 45 \times 20 \text{ mm}$
- Panel thickness from 18 up to 20 mm

Type	Description
LOCKDRC	Synthetic lock with chromium plated push-button
LOCKDRM	Synthetic lock with brass plated push-button

VETUS Fix

This glue has been specially developed to bond VETUS non-slip deck covering. However, it is also very suitable for bonding P.V.C.- and polyester foil to leather and wood. Excellent adhesion is obtained as well on laminated synthetics such as Formica, hard P.V.C. and ABS.

A can of 1 L VETUS FIX is sufficient to glue 2 to 3 m^2 .



BOATFIX1

Type	Description
BOATFIX1	Boatfix adhesive 1 L

Aluminium and zinc anodes

Protection by means of anodes is a "must" for all metal parts under water. Therefore anodes are required for wooden, fibre glass and aluminium hulls. The material of V-Quipment zinc anodes is of the highest possible standard, the U.S. mil.-A-18001 K. Anodes which do not meet these specifications have little or no effect.

V-Quipment aluminium anodes consist of an aluminium-indium-zinc alloy Mil - A - 24779 (SH). All V-Quipment anodes are streamlined and mounted either with studs which can be welded to a steel hull, or with through-hull bolts for fibreglass and wooden boats. **We supply these studs and bolts separately.**

Type of anode material

Type	Type of alloy according to
Zinc	MIL-A-18001K
Aluminium	MIL-A-24779 (sh)

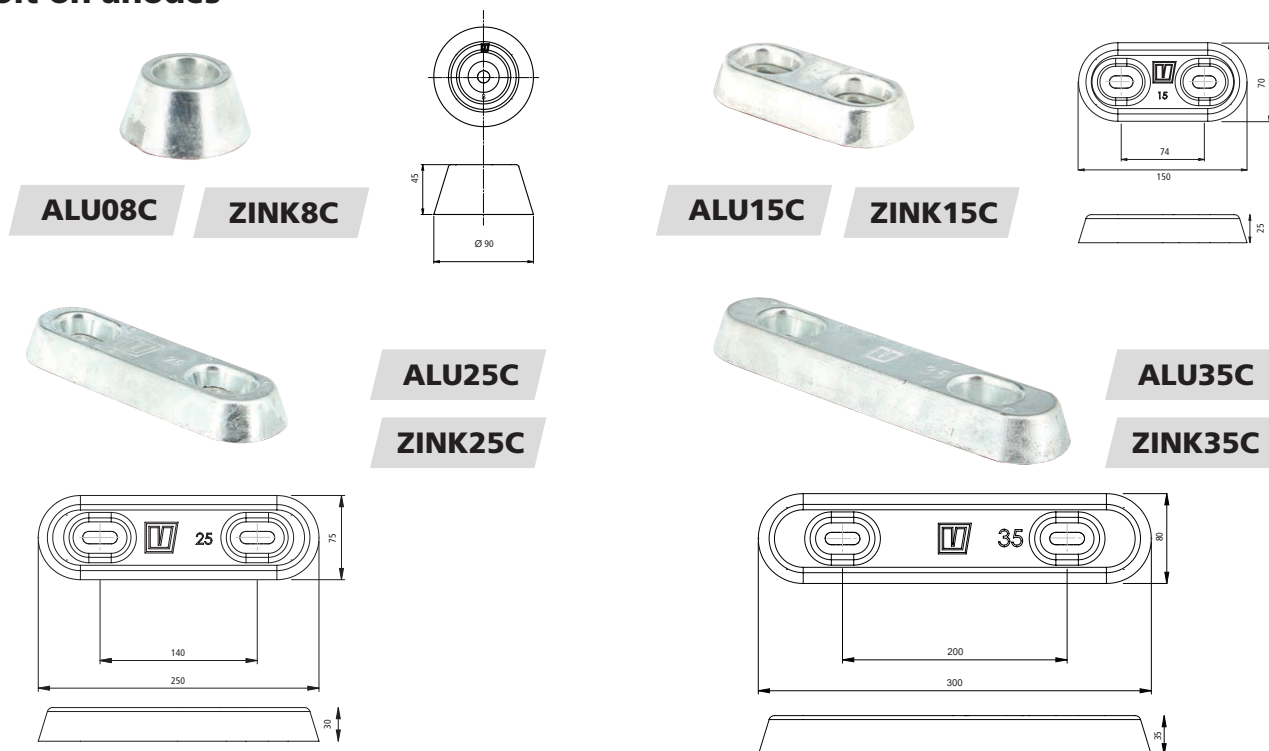
For vessels, which mostly cruise on inland (fresh) waters, we recommend aluminium anodes since aluminium has a greater difference of potential with other metals than zinc. This is very important, as fresh water provides a higher electrical resistance than salt water. For sailing on salt water or brackish water, we recommend the use of zinc anodes. Aluminium anodes also function well in salt water, but are sacrificed at a much faster rate. We do not recommend the use of magnesium anodes, as the difference of potential with other metals is too great which could cause damage to the hull paint, especially when sailing in brackish or salt waters.

Use the table below to select the right anode suitable for the type of water in which the boat is generally used.

Water type	Hull material				
	Wood	GRP	Aluminium	Steel	Sterndrive/ outboard
Fresh	Aluminium	Aluminium	Aluminium	Aluminium	Aluminium
Brackish	Zinc/ Aluminium	Zinc/ Aluminium	Zinc/ Aluminium	Zinc/ Aluminium	Aluminium
Salt	Zinc/ Aluminium	Zinc/ Aluminium	Zinc/ Aluminium	Zinc/ Aluminium	Aluminium

An annual inspection of the anode is needed, it should be replaced when the anode has been 50% sacrificed.

Bolt-on anodes



Type	Description	Type of contour	Protects M ² Adequate paint / worn out paint / unpainted	Length (mm)	Width (mm)	Height (mm)	Nett weight (kg)
ZINK8C	Hull anode, zinc MIL-A-18001K	Circular	12 / 6 / 3,5	90	90	45	1,1
ZINK15C	Hull anode, zinc MIL-A-18001K	Rectangular	14 / 7 / 3,5	150	70	25	0,98
ZINK25C	Hull anode, zinc MIL-A-18001K	Rectangular	24 / 12 / 6,5	250	75	30	2,5
ZINK35C	Hull anode, zinc MIL-A-18001K	Rectangular	40 / 20 / 10,5	350	80	35	4,7

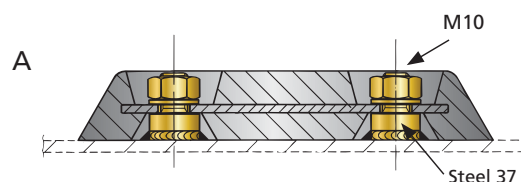
Aluminium and zinc anodes

Type	Description	Type of contour	Protects M ² Adequate paint / worn out paint / unpainted	Length (mm)	Width (mm)	Height (mm)	Nett weight (kg)
ALU08C	Hull anode, aluminium MIL-A-24779 (sh)	Rectangular	12 / 6 / 3,5	90	90	45	0,47
ALU15C	Hull anode, aluminium MIL-A-24779 (sh)	Rectangular	14 / 7 / 3,5	150	70	25	0,49
ALU25C	Hull anode, aluminium MIL-A-24779 (sh)	Rectangular	24 / 12 / 6,5	250	75	30	1,1
ALU35C	Hull anode, aluminium MIL-A-24779 (sh)	Rectangular	40 / 20 / 10,5	350	80	35	2,1
ZKITS	Anode connection kit for steel hulls						
ZKITP	Anode connection kit for G.R.P. hulls						

When ordering, please always specify the material of the hull. All metal parts must have a direct contact with the anode. Therefore the bolts supplied for e.g. fibreglass hulls must have a wire-connection, so that contact can be made with the metal parts. (See drawing B). On fibreglass and wooden boats only the **metal** parts must be protected. For anodes type 8 you need **one** (1) connection kit and for types 15, 15S, 25, 25S and 35 you need **two** (2) of these. All V-Quipment anodes have a protective layer of paint at the mounting side to prevent damage to the paint work of your boat.

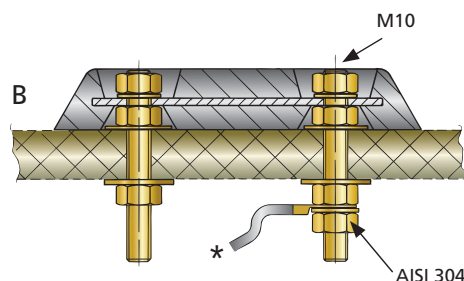
A How to install anodes on steel hulls

Anodes that are installed by means of studs are much easier to replace than anodes that are welded directly to the ship's hull. When ordering studs for a steel hull, please select the ZKITS bolt-on set.



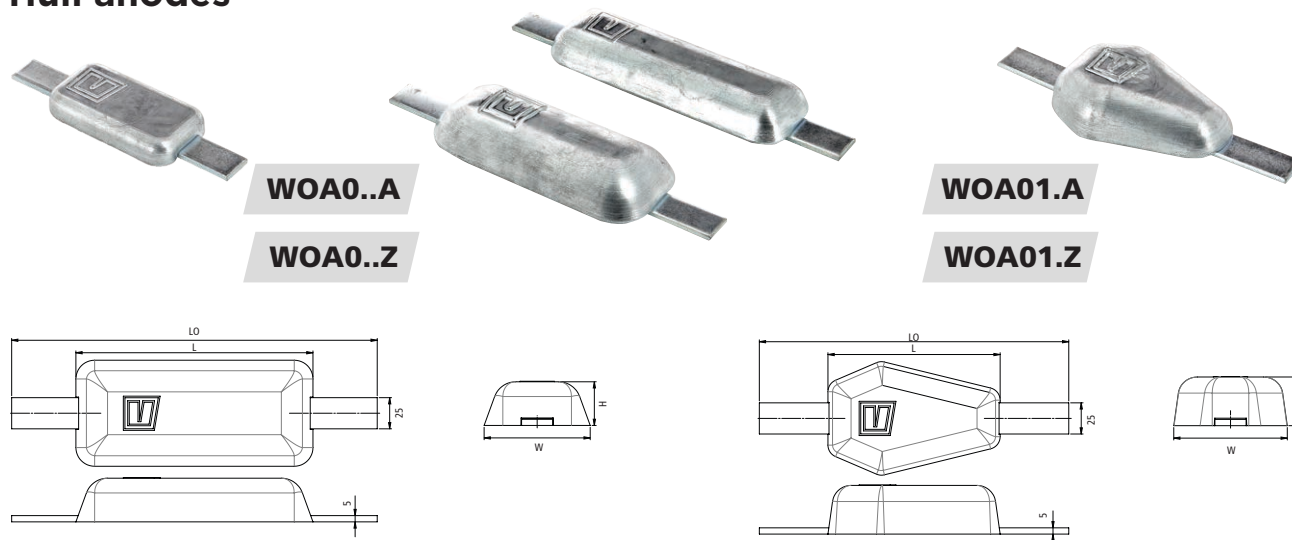
B How to install anodes on fibreglass and wooden hulls

For installing anodes on fibreglass and wooden hulls, please use our ZKITP bolt-on set. This ensures proper fixation and allows the anodes to be easily replaced when they are worn out.



* Copper wire to connect parts to be protected.

Hull anodes

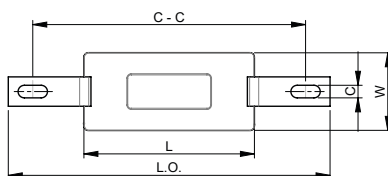


Hull anodes

Type	Description	Model	Length overall (LO=) (mm)	Length (L=) (mm)	Width (W=) (mm)	Height (H=) (mm)	Steel strap (mm)	Nett weight (kg)	Gross weight (kg)
WOA000Z	Weld- on hull anode, zinc	Rectangular	198	113	60	22	198x25x3	0,77	0,90
WOA000A	Weld- on hull anode, aluminium	Rectangular	198	113	60	17	198x25x3	0,25	0,36
WOA001Z	Weld- on hull anode, zinc	Rectangular	198	113	62	25	198x25x5	0,88	1,07
WOA001A	Weld- on hull anode, aluminium	Rectangular	198	113	62	25	198x25x5	0,36	0,55
WOA002Z	Weld- on hull anode, zinc	Rectangular	298	200	70	22	298x25x5	1,56	1,85
WOA002A	Weld- on hull anode, aluminium	Rectangular	298	200	70	22	298x25x5	0,76	1,05
WOA003Z	Weld- on hull anode, zinc	Rectangular	293	209	65	29	293x25x5	1,99	2,27
WOA003A	Weld- on hull anode, aluminium	Rectangular	293	209	65	29	293x25x5	0,82	1,10
WOA004Z	Weld- on hull anode, zinc	Rectangular	293	190	85	35	293x25x5	2,72	3,00
WOA004A	Weld- on hull anode, aluminium	Rectangular	293	190	85	35	293x25x5	1,17	1,45
WOA010Z	Weld- on hull anode, zinc	Drop	230	118	78	25	230x25x5	0,78	1,00
WOA010A	Weld- on hull anode, aluminium	Drop	230	118	78	25	230x25x5	0,33	0,55
WOA011Z	Weld- on hull anode, zinc	Drop	248	138	92	35	248x25x5	1,56	1,80
WOA011A	Weld- on hull anode, aluminium	Drop	248	138	92	35	248x25x5	0,71	0,95
WOA012Z	Weld- on hull anode, zinc	Drop	248	160	100	42	248x25x5	2,46	2,70
WOA012A	Weld- on hull anode, aluminium	Drop	248	160	100	42	248x25x5	1,01	1,25

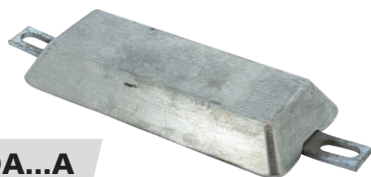


BOA...Z

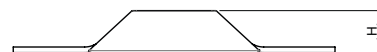
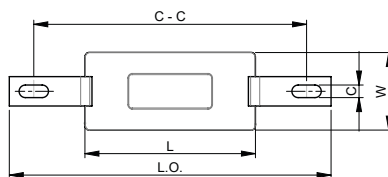


Type	Description	Model	Length overall (LO=) (mm)	Length (L=) (mm)	Width (W=) (mm)	Height (H=) (mm)	Steel strap (mm)	C - C (mm)	C (mm)	Nett weight (kg)	Gross weight (kg)
BOA001Z	Hull anode, zinc	Rectangular	165	85	35	16	165x15x3	118	6,5	0,20	0,24
BOA002Z	Hull anode, zinc	Rectangular	175	105	45	25	175x15x3	125	6,5	0,45	0,50
BOA003Z	Hull anode, zinc	Rectangular	225	120	55	30	225x20x4	180	9	0,80	0,94
BOA004Z	Hull anode, zinc	Rectangular	225	150	87	31	225x20x4	178	9	1,80	1,94
BOA005Z	Hull anode, zinc	Rectangular	295	215	94	31	295x25x5	255	13	3,14	3,40
BOA006Z*	Hull anode, zinc	Rectangular	350	250	108	35	350x25x5	-	-	5,15	5,60
BOA007Z*	Hull anode, zinc	Rectangular	450	340	150	35	450x50x5	-	-	9,70	10,40

*Steel strap without holes



BOA...A



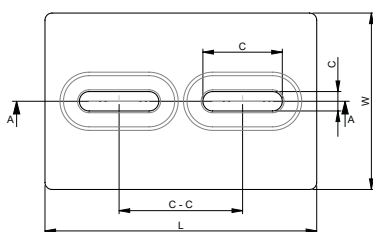
Type	Description	Model	Length overall (LO=) (mm)	Length (L=) (mm)	Width (W=) (mm)	Height (H=) (mm)	Steel strap (mm)	C - C (mm)	C (mm)	Nett weight (kg)	Gross weight (kg)
BOA003A	Hull anode, aluminium	Rectangular	230	130	60	30	230x20x5	195	9	0,31	0,44
BOA004A	Hull anode, aluminium	Rectangular	225	155	87	31	225x20x5	178	9	0,72	0,87
BOA005A	Hull anode, aluminium	Rectangular	295	215	94	31	295x25x5	255	13	1,28	1,52
BOA006A*	Hull anode, aluminium	Rectangular	350	250	108	35	350x25x5	-	-	2,05	2,40
BOA007A*	Hull anode, aluminium	Rectangular	450	340	150	35	450x50x5	-	-	3,70	4,50

*Steel strap without holes

Hull anodes

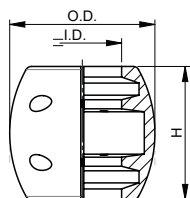


BOA...Z



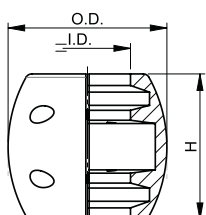
Type	Description	Model	Length (L=) (mm)	Width (W=) (mm)	Height (H=) (mm)	C - C (mm)	C (mm)	Nett weight (kg)	Gross weight (kg)
BOA021Z	Hull anode, zinc	Plate	146	64	19	73	13x28	0,90	0,91
BOA022Z	Hull anode, zinc	Plate	151	69	25	75	13x28	1,35	1,50
BOA023Z	Hull anode, zinc	Plate	200	110	28	130	13x28	3,20	3,50
BOA024Z	Hull anode, zinc	Plate	155	100	15	69	11x41	1,10	1,27
BOA025Z	Hull anode, zinc	Plate	303	151	13	141	13x98	3,30	3,63

Shaft anodes



ZINKAS..C

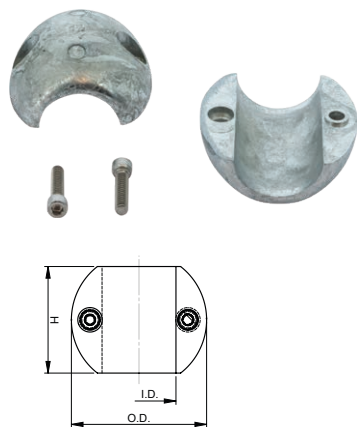
Type	Description	Model	I.D. (Shaft) (mm)	O.D. (mm)	H (mm)	Number of bolts	Nett weight (kg)
ZINKAS25C	Shaft anode, zinc	Collar	25	56	56	2	0,51
ZINKAS30C	Shaft anode, zinc	Collar	30	56	56	2	0,46
ZINKAS35C	Shaft anode, zinc	Collar	35	64	66	4	0,62
ZINKAS40C	Shaft anode, zinc	Collar	40	80	77	4	1,10
ZINKAS45C	Shaft anode, zinc	Collar	45	80	77	4	0,92
ZINKAS50C	Shaft anode, zinc	Collar	50	93	88	4	1,20
ZINKAS60C	Shaft anode, zinc	Collar	60	100	100	4	1,87



ZASA..C

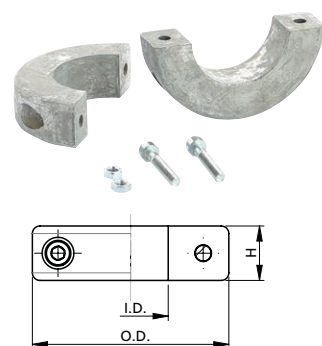
Type	Description	Model	I.D. (Shaft) inches	O.D. (mm)	H (mm)	Number of bolts	Nett Weight (kg)
ZASA1C	Shaft anode, zinc	Collar	1"	54	55	2	0,40
ZASA1¼C	Shaft anode, zinc	Collar	1¼"	61	60	2	0,53
ZASA1½C	Shaft anode, zinc	Collar	1½"	70	66	4	0,74
ZASA1¾C	Shaft anode, zinc	Collar	1¾"	80	70	4	1,07
ZASA2C	Shaft anode, zinc	Collar	2"	90	74	4	1,40

Shaft anodes



Type	Description	Model	I.D. (Shaft) (inches)	O.D. (mm)	H (mm)	Nett Weight (kg)
SAC114Z	Shaft anode, zinc	Collar	1¼	58	50	0,45
SAC138Z	Shaft anode, zinc	Collar	1½	67	64	0,77
SAC112Z	Shaft anode, zinc	Collar	1½	70	66	0,82
SAC134Z	Shaft anode, zinc	Collar	1¾	84	75	1,33
SAC2Z	Shaft anode, zinc	Collar	2	84	75	1,22
SAC214Z	Shaft anode, zinc	Collar	2¼	98	95	2,13
SAC212Z	Shaft anode, zinc	Collar	2½	105	98	2,35

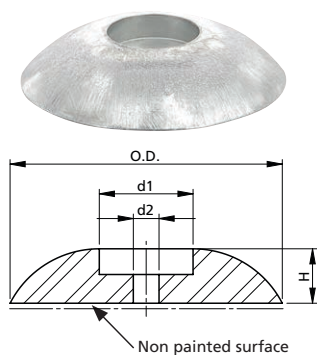
SAC..Z



Type	Description	Model	I.D. (Shaft) (mm)	O.D. (mm)	H (mm)	Nett Weight (kg)
SAR25Z	Shaft anode, zinc	Ring	25	65	18	0,31
SAR30Z	Shaft anode, zinc	Ring	30	65	18	0,28
SAR35Z	Shaft anode, zinc	Ring	35	65	18	0,25
SAR40Z	Shaft anode, zinc	Ring	40	80	20	0,47
SAR45Z	Shaft anode, zinc	Ring	45	80	20	0,44
SAR50Z	Shaft anode, zinc	Ring	50	89	25	0,71

SAR..Z

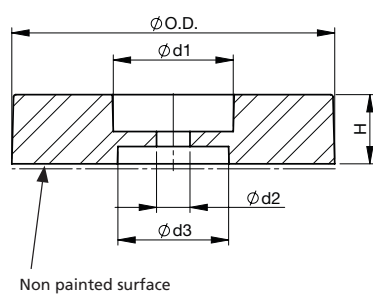
Rudder anodes



Type	Description	Model	O.D. (mm)	d1 (mm)	d2 (mm)	H (mm)	Nett Weight (kg)
RAD50Z	Rudder anode, zinc	Disc	50	20	6,5	11	0,083
RAD70Z	Rudder anode, zinc	Disc	70	22	8,5	13	0,23
RAD90Z	Rudder anode, zinc	Disc	90	31	8,5	18	0,45
RAD110Z	Rudder anode, zinc	Disc	110	30	11	18	0,7
RAD140Z	Rudder anode, zinc	Disc	140	35	12	30	1,5

RAD..Z

Stern anodes



Type	Description	Model	O.D. (mm)	H (mm)	d1 (mm)	d2 (mm)	d3 (mm)	Nett Weight (kg)
STAD001Z	Stern anode, zinc	Disc	140	30	52	14,5	48	2,7
STAD002Z	Stern anode, zinc	Disc	140	35	55	14,5	48	3,0
STAD003Z	Stern anode, zinc	Disc	125	38	50	14,5	48	2,7
STAD004Z	Stern anode, zinc	Disc	135	47	M50x3	14,5	32	3,7


STAD001Z

STAD002Z

STAD003Z

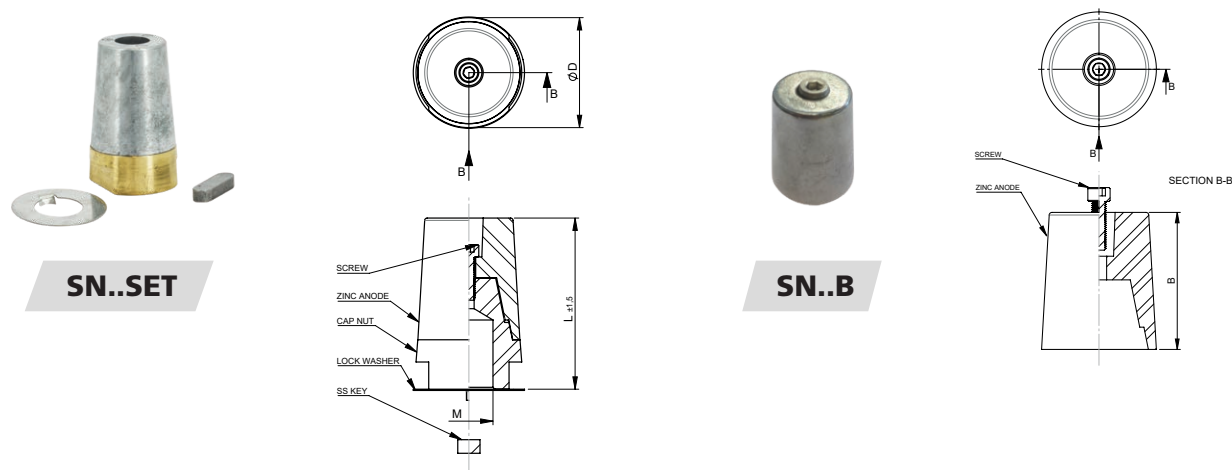
STAD004Z

Aluminium and zinc anodes

Shaft anodes, for installation directly to the propeller shaft

The V-Quipment shaft anodes are designed to create a perfect fit on the shaft. Even if the anode is eroded, it can't fall off. Shaft anodes are not recommended on high speed vessels. They create turbulence in the water flow around the propeller and as they erode, can cause imbalance in the propeller shaft. These problems do not occur when using the V-Quipment propeller nut with integrated zinc anode.

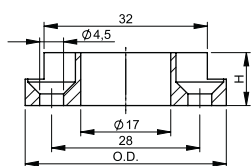
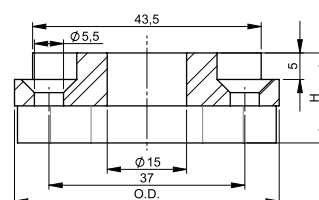
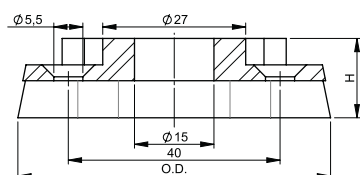
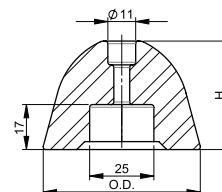
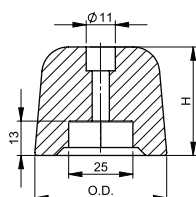
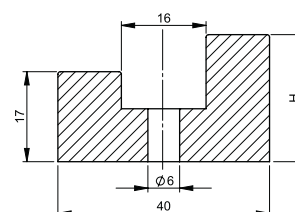
Zinc anode set for VETUS propeller shafts



Type	Description	M	Ø D	Nett Weight (kg)	L +/- 1,5	Replacement anode only
SN25SET	Complete zinc anode set for Ø 25 mm shaft nut	M16 x 1,5	37	0,128	59	SN25B
SN30SET	Complete zinc anode set for Ø 30 mm shaft nut	M20 x 1,5	45	0,332	75	SN30B
SN35SET	Complete zinc anode set for Ø 35 mm shaft nut	M24 x 2	49	0,290	86	SN35B
SN40SET	Complete zinc anode set for Ø 40 mm shaft nut	M24 x 2	54	0,504	96	SN40B
SN45SET	Complete zinc anode set for Ø 45 mm shaft nut	M30 x 2	65	0,750	104	SN45B
SN50SET	Complete zinc anode set for Ø 50 mm shaft nut	M36 x 3	75	0,944	116	SN50B
SN60SET	Complete zinc anode set for Ø 60 mm shaft nut	M42 x 3	89	3,8	138,5	SN60B

Type	Description	B	Anode Weight (gr)
SN25B	Spare zinc anode for Ø 25 mm shaft nut	39	140
SN30B	Spare zinc anode for Ø 30 mm shaft nut	52,5	248
SN35B	Spare zinc anode for Ø 35 mm shaft nut	61	386
SN40B	Spare zinc anode for Ø 40 mm shaft nut	68	524
SN45B	Spare zinc anode for Ø 45 mm shaft nut	76	834
SN50B	Spare zinc anode for Ø 50 mm shaft nut	84	1050
SN60B	Spare zinc anode for Ø 60 mm shaft nut	98,5	1582

Zinc anodes for VETUS bow thrusters


SET0148

SET0149

SET0150

SET0151

SET0152

SET0153


Type	Description	O.D. (mm)	H (mm)	Nett Weight (kg)
SET0148	Zinc anode for bow thruster 25 kgf, BOWA030	38	10	0,042
SET0149	Zinc anode for bow thruster 35, 45, 55 kgf, BOWA036, 042, 057, BOWB042, 057	50	17	0,144
SET0150	Zinc anode for bow thruster 60, 75, 80, 95 kgf, BOWA065, 076, 090, BOWB065, 076, 090	60	15	0,152
SET0151	Zinc anode for bow thruster 125, 130, 160 kgf, BOWA110	59	41	0,422
SET0152	Zinc anode for bow thruster 220, 230, 285, 300, 310 kgf	49	41	0,372
SET0153	Zinc anode for bow thruster 23, 50, 80 kgf	-	24	0,075

