



Flexible couplings

Type KO5 (type 6)

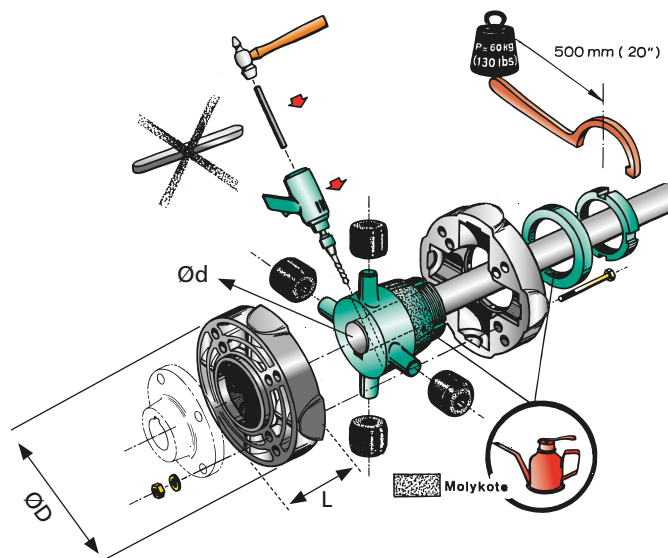
100% Concentric fit

This flexible coupling has a special conical clamping hub and is suitable for V-drives.

Type 6 saves considerable installation time. It is pilot bored $\varnothing 20$ mm or with a cylindrical bore for $\varnothing 25, 30$ and 35 mm shaft. Comes with 4 and 5" connectors for ZF-Hurth, Velvet, Technodrive and PRM.



KO5



Specifications

Type	DIN 6270 B = pleasure craft. kW/100 r.p.m. on shaft (HP)	Example: at 1500 r.p.m. the max. admissible power is (DIN B)	DIN 6270 A = commercial craft. kW/100 r.p.m. on shaft (HP)	Ø D (mm)	L (mm)	Ø d (mm)	Weight (kg)
COMFL1325	2,4 (3,2)	15 x 2,4 = 36 kW (48 hp)	1,7 (2,2)	132	137	25	3,5
COMFL1330	2,4 (3,2)	15 x 2,4 = 36 kW (48 hp)	1,7 (2,2)	132	137	30	3,2
COMFL1225	5,2 (7,1)	15 x 5,2 = 79 kW (107 hp)	3,6 (5)	132	137	25	3,5
COMFL1230	5,2 (7,1)	15 x 5,2 = 79 kW (107 hp)	3,6 (5)	132	137	30	3,2
UNIFL1320	2,6 (3,6)	15 x 2,6 = 39 kW (53 hp)	1,8 (2,5)	130	98	20	2,4
UNIFL1325	2,6 (3,6)	15 x 2,6 = 39 kW (53 hp)	1,8 (2,5)	130	98	25	2,4
UNIFL1330	2,6 (3,6)	15 x 2,6 = 39 kW (53 hp)	1,8 (2,5)	130	98	30	2,4
UNIFL1630	5,2 (7,1)	15 x 5,2 = 79 kW (107 hp)	3,6 (5)	199	131	30	6,9
UNIFL1635	5,2 (7,1)	15 x 5,2 = 79 kW (107 hp)	3,6 (5)	199	131	35	6,9
UNIFL1640	5,2 (7,1)	15 x 5,2 = 79 kW (107 hp)	3,6 (5)	199	131	40	6,9
KO51	3,9 (5,3)	15 x 3,9 = 58,5 kW (79,5 hp)	3,3 (4,5)	137	84	25	2,7
KO52	3,9 (5,3)	15 x 3,9 = 58,5 kW (79,5 hp)	3,3 (4,5)	137	84	30	2,7
KO53	3,9 (5,3)	15 x 3,9 = 58,5 kW (79,5 hp)	3,3 (4,5)	137	84	35	2,7
KO54 (type 6)	3,9 (5,3)	15 x 3,9 = 58,5 kW (79,5 hp)	3,3 (4,5)	137	84	20 Pilot	2,7

Bolt sets required to attach the flexible coupling to gearbox drive flange

Type	Description
SET64	Set bolts for coupling type 6, for flange 4"
SET65	Set bolts for coupling type 6, for flange 5"
UNISSET4/5	Set studs and bolts (M10) for couplings Combiflex, Uniflex and Bullflex 1-8, for flange 4"/5"

