

## E-LINE

# 110

13,3 kW input peak power  
1600 RPM - 67 Nm output

11,3 kW input power  
1500 RPM - 61 Nm output



**MPE1KB**



**MPE1MBV**



**ELINE110S**

### Supplied with

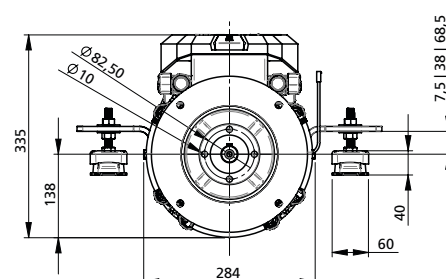
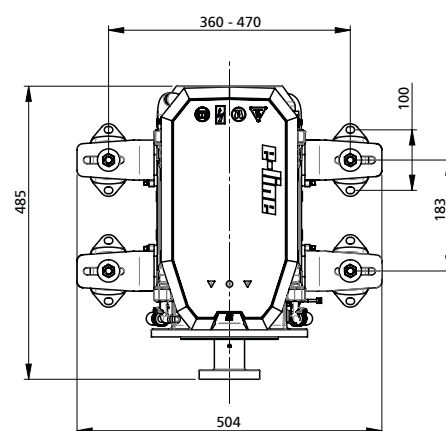
- Swap & Go motor brackets and motor mounts type EMX65
- Integrated thrust bearing
- Mounting flange 4" suitable for Combiflex 12, Bullflex type 1 (see page 95 for couplings and propeller shaft products)
- MPE1KB key switch - all-in-one solution; V-CAN power supply, external 12 VDC power supply and anti-theft, see page 80
- MPE1MBV monitoring panel - V-CAN monitoring, battery indication, motor alarms and motor status, see page 82
- IV4812360 converting 48 VDC to the required V-CAN power supply 12 VDC

### Additional components and accessories to upgrade your electric boating experience

- Side-mount V-CAN control levers with different propulsion modes (see page 81)
- Fresh-water cooling set for clean fresh surface water (see page 80)
- Keel cooling set for a closed cooling system - salt and muddy waters (see page 80)
- Multifunctional display and battery monitoring solutions (see pages 82 and 83)
- Shore power connection set (see page 279)

## TECHNICAL SPECIFICATIONS

E-LINE model	110
Motor type	Brushless induction motor
CAN bus	V-CAN
Nominal input voltage	48 VDC (40 - 60 VDC)
Maximum input current draw	295 A
Maximum output power	11,2 kW (cf. 22 hp)
Indicative energy consumption*	1 kWh @ 6 km/h (3,5 kt)*
Suitable for indicative boat length	up to 11 m (36 feet) or 8 ton*
Motor output power	10 kW (@1500 rpm) (ISO/DIS 8665-2)
Maximum shaft rpm in NORMAL mode	1500 rpm
Maximum shaft rpm in ECO mode	1200 rpm
Maximum shaft rpm in POWER mode	1600 rpm
Maximum torque	70 Nm
Transmission ratio	1:1 direct electric drive
Coupling (optional)	Combiflex 1225 / 1230   Bullflex 0125 / 011
IP-rating motor	IP65 with gore-tex membrane and IPx3 cover
Cooling system	Air and liquid cooled
Liquid cooling system connections	12,7 mm (1/2") (intake and outlet)
Control and warning lights and audible indication on MPE1MBV panel (standard)	Propulsion active, POWER mode, temperature, battery level indication, high current draw, low voltage, limiting alarm
Electric circuit protection	Fuse 300 Amps
Dry weight	71 kg
Equipped with	Active Electronic Braking Battery Protection function Boosted Battery Charge function



\*Indication only. Values strongly depending on hull shape, boat length, weight, propeller pitch/diameter and other parameters.