



## Cooling water strainers

### Heavy duty filter: Type CWS

For installations where the cooling water strainer must be mounted close to or below the waterline and for commercial applications, these nickel plated bronze strainers are an ideal solution. The cover is removable with one screw. Tested up to 7 bar overpressure.

This filter is available in three different sizes, with threaded connections of G1, G1 ¼ and G1 ½. Matching V-Quipment hose connections are available separately, see table below for item numbers.

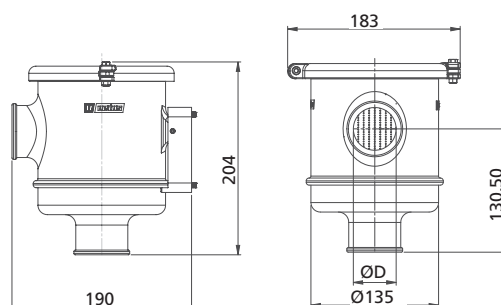
#### Specifications

- Housing is made of nickel plated bronze
- Cover is made of polycarbonate
- Filter element is made of stainless steel (AISI 316)
- Mounting bracket is made of nickel plated bronze
- Can be mounted near or below the waterline
- V-Quipment hose connections available separately, see also page 432



**CWS**

Type	Matching hose connector			Hose size		Recommended input (L/min.)
	Bronze	Brass	Brass	(mm)	(inches)	
CWS1¼	HPB11/4	HPM11/4	SLP11/438	31,8	1¼	143
CWS1½	HPB11/2	HPM11/2	SLP11/432	38,1	1½	200



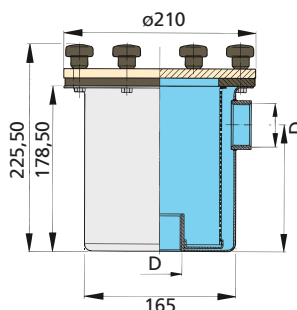
### Type FTR525

This water strainer has G 1½ threaded connections. A set of stainless steel (AISI 316) mounting brackets (SETBKB170) can be supplied as an option. Hose connectors are not supplied as standard. They can be found on page 432 of this catalogue.

#### Specifications

- Stainless steel (AISI 316) housing and filter element
- Acrylic cover

Type	D	Internal hose Ø		Recommended input (L/min.)
		(mm)	(inches)	
FTR525	G 1½	38	1½	205



**FTR525**



**SETBKB170**