

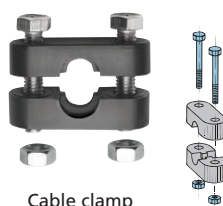


Cable accessories

Ball-joint / Cable clamp

An extra for all VETUS push-pull cables.

Type	Description
KABELKL	Cable clamp for cables type 33 and LF
KOGELGEWR	Ball-joint for cables type 33 and LF



Cable clamp

KABELKL



Ball-joint

KOGELGEWR

Shut-off control

Type DC

Designed for mechanical fuel shut-off and similar actuation tasks. Equipped with a robust mounting base and connection point for push-pull control cables, allowing precise and reliable manual operation.

Type DC is corrosion resistant and easy to install (horizontally or vertically) and can be used with VETUS push-pull cables. Comes with a 30° mounting bracket.

Type	Description
DC	Cable pull handle type DC



DC

Dual station units type DS

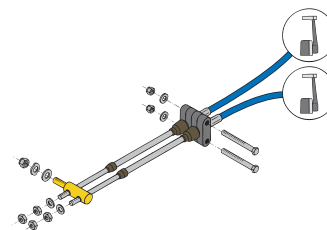
Type DS combines the action of a single lever control from either of two command stations, providing a single output to the engine throttle or gearbox lever. Two dual station units are needed per engine (type DS-UNIT for the gearbox and type DS-KITF for the throttle).

DS-kit throttle

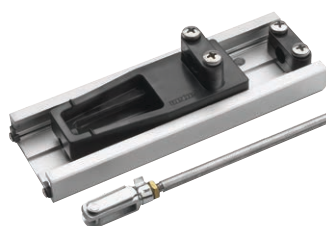
(only suitable for throttle control by pulling).



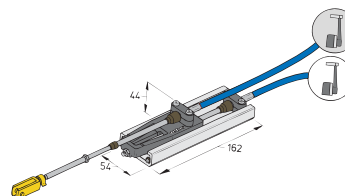
DSKITF



DS-unit (gearbox)



DS



Type	Description
DSKITF	Dual station unit type DS, for throttle
DS	Dual station unit type DS, for gearbox

