

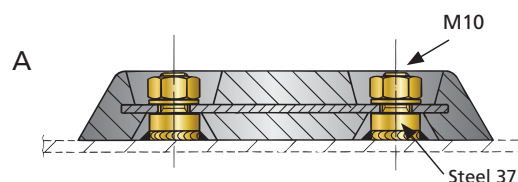
Aluminium and zinc anodes

Type	Description	Type of contour	Protects M ² Adequate paint / worn out paint / unpainted	Length (mm)	Width (mm)	Height (mm)	Nett weight (kg)
ALU08C	Hull anode, aluminium MIL-A-24779 (sh)	Rectangular	12 / 6 / 3,5	90	90	45	0,47
ALU15C	Hull anode, aluminium MIL-A-24779 (sh)	Rectangular	14 / 7 / 3,5	150	70	25	0,49
ALU25C	Hull anode, aluminium MIL-A-24779 (sh)	Rectangular	24 / 12 / 6,5	250	75	30	1,1
ALU35C	Hull anode, aluminium MIL-A-24779 (sh)	Rectangular	40 / 20 / 10,5	350	80	35	2,1
ZKITS	Anode connection kit for steel hulls						
ZKITP	Anode connection kit for G.R.P. hulls						

When ordering, please always specify the material of the hull. All metal parts must have a direct contact with the anode. Therefore the bolts supplied for e.g. fibreglass hulls must have a wire-connection, so that contact can be made with the metal parts. (See drawing B). On fibreglass and wooden boats only the **metal** parts must be protected. For anodes type 8 you need **one** (1) connection kit and for types 15, 15S, 25, 25S and 35 you need **two** (2) of these. All V-Quipment anodes have a protective layer of paint at the mounting side to prevent damage to the paint work of your boat.

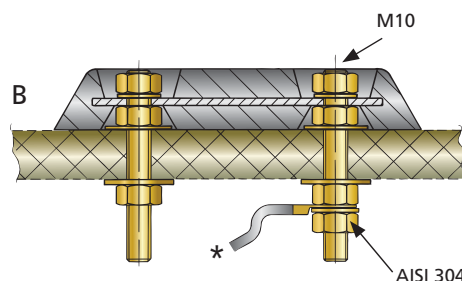
A How to install anodes on steel hulls

Anodes that are installed by means of studs are much easier to replace than anodes that are welded directly to the ship's hull. When ordering studs for a steel hull, please select the ZKITS bolt-on set.



B How to install anodes on fibreglass and wooden hulls

For installing anodes on fibreglass and wooden hulls, please use our ZKITP bolt-on set. This ensures proper fixation and allows the anodes to be easily replaced when they are worn out.



* Copper wire to connect parts to be protected.

Hull anodes

