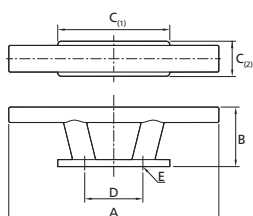


Deck equipment


TAURUS..


Taurus cleats

The Taurus cleats are solid, reliable, and easy to use. Made from high-gloss polished stainless steel (AISI 316), they are built to last in tough marine conditions. These cleats have smooth edges for safe line handling and clean deck installations. Most models are designed with hidden fastenings underneath for a neat look. Whether you are mooring a small boat or a larger vessel, there's a Taurus cleat to match your needs - with safe working loads from 575 kg up to 2620 kg.

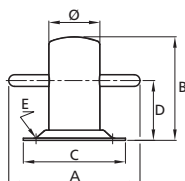
Key features:

- Made of high-quality stainless steel (AISI 316)
- Polished surface
- Safe working loads up to 2620 kg
- Hidden fastenings on most models
- Multiple sizes and mounting styles available
- Easy to install and maintain

Type	Model	SWL* (kgf)	A (mm)	B (mm)	C ₍₁₎ x C ₍₂₎ (mm)	D (mm)	E (mm)
TAURUS01	A	575	140	50	90 x 30	47	M8 (2x)
TAURUS02	A	900	195	60	121 x 35	69	M10 (2x)
TAURUS03	A	1310	255	75	150 x 40	83	M12 (2x)
TAURUS04	A	2470	300	85	160 x 50	83	M16 (2x)
TAURUS05	B	2470	300	85	200 x 85	83	M16 (2x)
TAURUS06**	C	2620	300	85	200 x 85	130 x 55	Ø 12,5 (4x)

* SWL = Safe working load

** Four holes in a rectangle as dimensioned by D. Holes are 90° countersunk.


ACHIL...


Bollard

Made of high-gloss polished stainless steel (AISI 316). Bollards type ACHILZ are suitable for direct welding to the deck. Dimensions are similar to ACHIL.

Type	SWL *	A (mm)	B (mm)	Ø (mm)	C (mm)	D (mm)	E (mm)
ACHIL080	620 kgf	120	90	40	80 x 65	52	4 x Ø6,5
ACHIL090	620 kgf	130	95	50	92 x 92	52	4 x Ø6,5
ACHIL110	1150 kgf	160	120	60	122 x 97	70	4 x Ø6,5
ACHIL130	1150 kgf	180	142	70	140 x 118	82	4 x Ø8,5
ACHIL150	1800 kgf	200	172	80	153 x 122	100	4 x Ø10,5
ACHIL160	2620 kgf	255	195	90	165 x 135	120	4 x Ø12,7
ACHIL080Z	620 kgf	120	80	40	-	42	-
ACHIL090Z	620 kgf	130	90	50	-	47	-
ACHIL110Z	1150 kgf	160	110	60	-	60	-
ACHIL130Z	1150 kgf	180	130	70	-	70	-
ACHIL150Z	1800 kgf	200	150	80	-	78	-
ACHIL160Z	2620 kgf	255	160	90	-	82	-

Type	Description
ACHIL090B	Bollard type Achilles 90, with bolt mounting

Bollard type ACHIL090B for small craft is fastened by means of two M8 bolts. Dimensions are similar to ACHIL090.

* SWL = Safe working load