

Comfort



PC13

Base (fixed height)

Low profile anodised base with 360° swivel.

Type	Height (H) (mm)	Mounting hole pattern	Post Ø (D1) (mm)	Base Ø (D3) (mm)	Weight (kg)	Load static (kg)	Load dynamic (kg)
PC13	134	S	73	228	2	204	102



PCS15

Base (fixed height)

Low profile anodised base with 360° swivel and slide.

Type	Height (H) (mm)	Mounting hole pattern	Post Ø (D1) (mm)	Base Ø (D3) (mm)	Weight (kg)	Load static (kg)	Load dynamic (kg)
PCS15	153	R / S	73	228	4	204	102



PCBS

Swivel with slide

Aluminium 360° swivel with slide with seven locking positions. For direct mounting.

Type	Height (H) (mm)	Mounting hole pattern	Base Ø (D3)	Weight (kg)	Load static (kg)	Load dynamic (kg)
PCBS*	70	R / S	S	2,5	204	102
PCBSR**	70	R / S	S	2,5	204	102



PCBSR

* The lever controls positioned at left and right side.
** The lever controls positioned at one side.



PCBL

Base, rotatable with locking position

Aluminium 360° rotatable base with seven locking positions. For direct mounting.

Type	Height (H) (mm)	Mounting hole pattern	Base	Weight (kg)	Load static (kg)	Load dynamic (kg)
PCBL	51	S	S	2	204	102

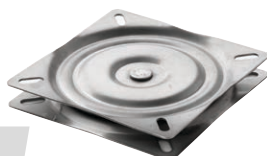


PCB

Base, rotatable and removable

Rotatable and removable synthetic 360° swivel base for direct mounting.

Type	Height (H) (mm)	Mounting hole pattern	Base	Weight (kg)	Load static (kg)	Load dynamic (kg)
PCB	55	S	S	0,7	204	102



PCBR

Base, rotatable

360° Rotatable base for direct mounting. Made from stainless steel (AISI 304).

Type	Height (H) (mm)	Mounting hole pattern	Base	Weight (kg)	Load static (kg)	Load dynamic (kg)
PCBR	23	S	S	1	204	102

