



## Passive ventilators

### Closeable deck ventilator type UFO2

#### Low profile deck ventilator with integral mushroom ventilator

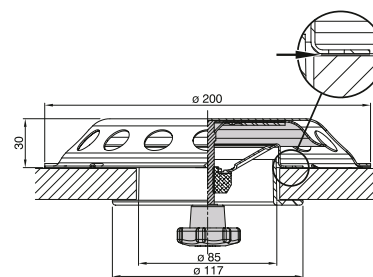
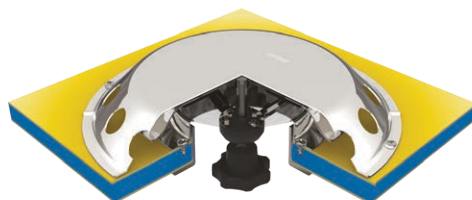
This deck ventilator can be closed and made absolutely watertight. When opened the UFO2 ensures constant ventilation and still remains rain and splash proof. Its cover is made of high-gloss polished stainless steel (AISI 316) as is the internal mushroom ventilator. ISO 12216, Area AII (for information regarding the location area, see page 306).

#### Characteristics

- Free flow area 20 cm<sup>2</sup>
- Comes with an integral mosquito screen
- A synthetic finishing ring is supplied as standard



**UFO2**



Type	Description	Free flow area (cm <sup>2</sup> )
UFO	Deck ventilator (stainless steel AISI 316)	24
UFOTR	Deck ventilator (stainless steel AISI 316)	24
UFOPCB	Deck ventilator (stainless steel AISI 316 black powder coated)	24
UFO2	Closeable deck ventilator (stainless steel AISI 316)	20

### Mushroom ventilators type DARTAGN1, ATHOS1 and PORTOS1

#### High polished stainless steel (AISI 316) ventilators

These mushroom ventilators can be opened from the outside or from the inside using an integral knob. They include a mosquito screen and counter flange, both made of synthetic material. ISO 12216, Area AII (for information regarding the location area, see page 306).



**DARTAGN1**

**DARTAGNB**



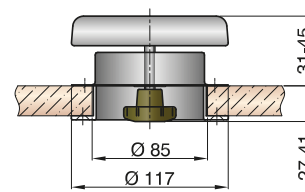
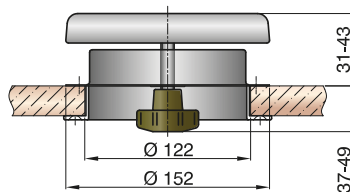
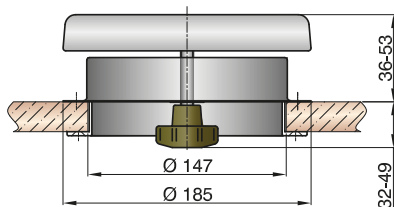
**ATHOS1**

**ATHOSB**



**PORTOS1**

**PORTOSB**



Type	Description	Free flow area (cm <sup>2</sup> )
DARTAGN1	Mushroom ventilator (stainless steel AISI 316)	83
DARTAGNB	Mushroom ventilator (stainless steel AISI 316 black powder coated)	83
ATHOS1	Mushroom ventilator (stainless steel AISI 316)	52
ATHOSB	Mushroom ventilator (stainless steel AISI 316 black powder coated)	52
PORTOS1	Mushroom ventilator (stainless steel AISI 316)	21
PORTOSB	Mushroom ventilator (stainless steel AISI 316 black powder coated)	21

