



Portholes / Portlights

Aluminium portholes / portlights

VETUS offers a wide range of aluminium portholes / portlights in categories AI and AIII. The 10 mm 'smoke' coloured opening pane is set in a satin anodized or a black powder coated aluminium frame. The clamp fixing ensures that no fasteners are visible from either inside or outside. The portholes / portlights can be held open in any position due to the friction type hinges.

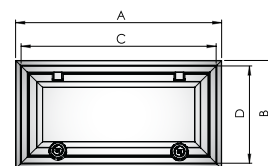
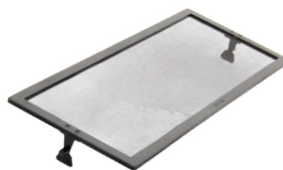
The porthole / portlight can be fitted in a surface with a minimum thickness of 2 mm and a maximum thickness of 18 mm. As standard a mosquito screen is supplied. Replacement knobs (2 pieces) suitable for type PL, PM, PZ, PW and PX (VP000044) available.

The frequent requested options are listed below the porthole types.

Portlight type PL Series (AI)

Ultra-low profile portlights

PL series portlights are so flush that they resemble fritted glass and are suitable to be installed into a variety of materials. Despite their slimness, they are still location area AI CE approved, which means they are usable for all areas listed in the ISO standard! These ultra slim portlights can handle panel thicknesses ranging from 2 up to 20 mm.



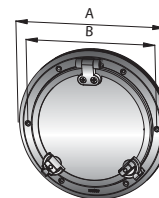
PL

Type	Cut-out dimensions C x D (mm)	External dimensions A x B (mm)	Replacement mosquito screen
PL711	303 x 156	323 x 176	HOR711
PL721	347 x 171	367 x 191	HOR721
PL731	429 x 171	449 x 191	HOR731
PL741	626 x 171	646 x 191	HOR741
PL751	429 x 244	449 x 264	HOR751

Special order only

Type	Code	Example PL711
Clear anodized	Type code + A	PL711A
Fixed	Type code - 1 + F	PL71F
Clear anodized fixed	Type code - 1 + F + A	PL71FA

Porthole type PW (AI)



PW

Type	Cut-out dimensions B (mm) Ø	External dimensions A (mm) Ø	Replacement mosquito screen
PW201	174	198	HOR2013
PW211	196	220	HOR2113
PW221	236	260	HOR2213

Special order only

Type	Code	Example PW201
Black powder coated	Type code + P	PW201P
Fixed	Type code - 1 + F	PW20F
Black powder coated fixed	Type code - 1 + F + P	PW20FP