



Stabilizers (hydraulic)

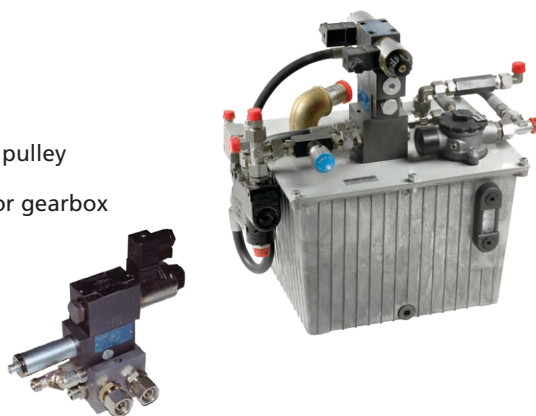
Installation options

Available as a stand alone system

- Connected to a belt driven hydraulic pump with bearing support and pulley
or
- Connected to a hydraulic pump fitted to a SAE-A PTO on the engine or gearbox

Our stabilizers are also easy to integrate into existing systems

- By adding a VETUS hydraulic control unit (HT1024) between the current hydraulic system and the VETUS stabilizers



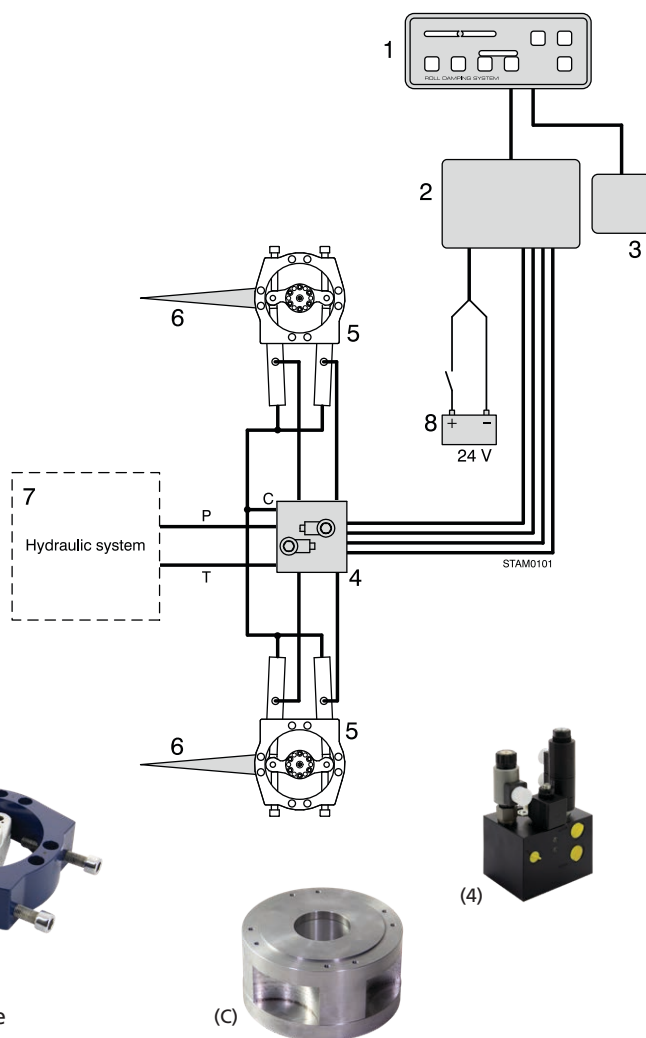
Scope of supply

The following parts are included:

- A Basic set (code: STA24VA), consisting of:
- Control panel (1)
 - Junction box (2)
 - Roll sensor ('solid state' gyroscope) (3)
 - Hydraulic valve block (4)
 - Two actuator units with hydraulic cylinders (5)
- B Set of two AISI 316 stainless steel fins:
- Set of fins with surface area of 0,3 m² - 0.7 m² (6)
- C Two bushes (to install fins through hull):
- Welding bushes, steel (code: STATHS)
 - Welding bushes, aluminium (code: STATHA)
 - Laminated bushes (code: STATHG)

Also required:

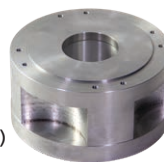
- Hydraulic pump(s) (7)
- Hydraulic tank (7)
- Hydraulic control unit (code: HT1024) (7)



(1)



(5)



(C)



(4)

Automatic centring

Putting the gearbox in neutral or astern, the fins will centre automatically. This reduces drag and makes manoeuvring in the marina a lot easier.

VETUS CAN DESIGN AND SUPPLY THE COMPLETE HYDRAULIC SYSTEM IF REQUIRED

