

Power hydraulics

Hydraulic load sensing and control devices

In order to direct the oil flow from the hydraulic pump to the equipment to be driven, load sensing and control devices, which are built up in modular construction segments, are used. These ensure the correct speed and sense of rotation of the equipment to be driven. Supplied as standard for 24 VDC electric installations, 12 VDC on request.

HT1011

Single step load sensing device (24 VDC). Gives zero or full flow rate, depending on whether a load is sensed or not. Used for e.g. bow and stern thrusters. Includes electrical connection box.

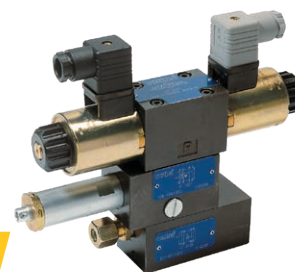


HT1011

HT1012

Dual step load sensing device (24 VDC). Gives zero, partial or full flow rate, dependent on load sensed. Used for e.g. bow and stern thrusters. Includes electrical connection box.

Not compatible for systems with a fixed displacement pump.



HT1012

HT1013

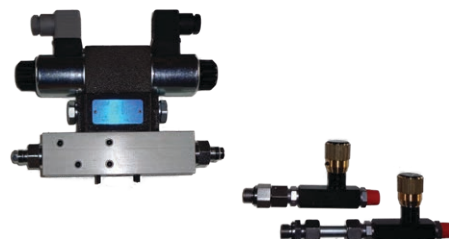
Solenoid control unit (24 VDC) for bow and stern thrusters.



HT1013

HT1014

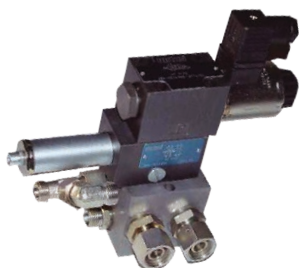
Solenoid control unit (24 VDC) with counterbalance, for e.g. mast lowering, hinged radar support (or any other hydraulic cylinder for numerous applications).



HT1014

HT1024

Solenoid control unit (24 VDC) for use with a set of stabilisers.



HT1024

HT102311

Control unit for anchor winches, capstans and other applications which are driven by a hydromotor with a flow rate of up to 60 L/minute. Pressure and oil flow separately adjustable.

HT102312

Control unit for anchor winches, capstans and other applications which are driven by a hydromotor with a flow rate of up to 60 L/minute. Only the oil flow is adjustable.



HT102311



HT102312