

Power hydraulics

Hydraulic tanks

Hydraulic systems require the installation of a hydraulic tank, as a collection point for hot hydraulic fluid returning from all of the user devices in the system, and as a reservoir from which the pump or pumps can draw the hydraulic fluid and re-pressurize it for re-use. The returning hydraulic fluid foams when it reaches the tank and returns to atmospheric pressure. So the tank must be sized so that the fluid is in the tank long enough for the foam to "boil out", returning the fluid to a completely liquid state, able to maintain its volume as it is re-pressurized by the pump(s).

The table shown on the next page provides guidance for tank selection for systems driving thrusters. All other device will be covered if the system is adequately sized for the thrusters.

Hydraulic reservoir tanks

Examples of hydraulic reservoir tanks.

HT1010 comes with a NG6 (D03) 5 fold manifold and one HT1013 on/off directional valve as standard. A HT1011 single step or HT1012 dual step load sensing device should be ordered separately.



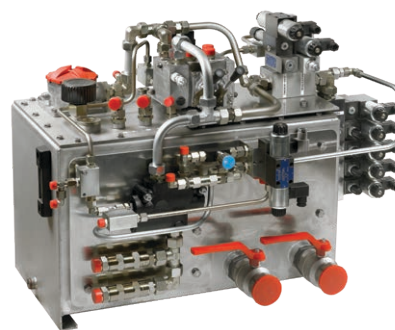
HT1028B



HPTANK



HT1010



HT1010BS

Tank type	HT1028B	HPTANK	HT1010	HT1010BS
Tank capacity (L)	20	38	70	130
Weight (kg)	24	29	34	68
Total height (mm)	415	565	490	580
Wide (mm)	470 x 310	530 x 210	620 x 480	730 x 600
Voltage (DC)	24 (12 on request)	24 (12 on request)	24 (12 on request)	24 (12 on request)
Vibration dampers (ordered separately)	HT3020 (set of 4)	HT3010 (set of 4)	HT3010 (set of 4)	HT3010 (set of 4)
Height (mm)	15	30	30	30
Material body	aluminium alloy	stainless steel (AISI 316)	aluminium alloy	stainless steel (AISI 316)