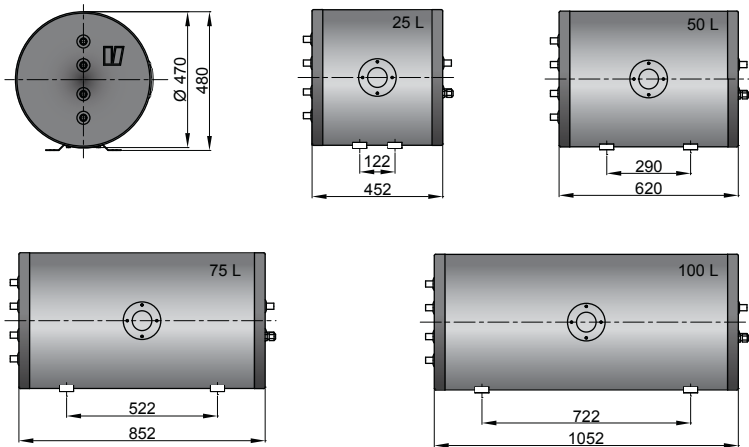


Fresh water systems

Water heaters

Standard twin coil water heater type WHT

This twin coiled calorifier range will double your comfort on board when it comes to hot water. One heating coil can be connected to the engine cooling circuit to make use of surplus engine heat. The other coil can be connected to an on board heating system. All water heaters are supplied with a 1500 Watt electric heating element, six hose connectors 16 mm and a 6 bar pressure relief/non return valve.



Type	Contents of fresh water (L)	Contents of coolant (L)
WHT025	25	0,5
WHT050	50	0,5
WHT075	75	0,5
WHT100	100	0,5

Specifications WHT

Construction	
Tank	Duplex stainless steel
Insulation	Polyurethane foam, 50 mm thickness, supplied with white coated steel outer jacket
Connections	
Engine coolant	G 1/2
On-board heating system	G 1/2
Fresh water	G 1/2
Heating element	G 1 1/4, 1500 Watt, 230 VDC
Pressure relief valve setting	6 bar (87 lbs / sq.inch)

