

Fuel systems

Inspection ports

Universal inspection port for tanks type ILT120B and ILT120X

Innovative inspection port with robust design

The VETUS ILT is an innovative inspection port which facilitates easy opening, inspecting and cleaning the tank, even after being closed for a long time. The ILT120 is available in two ISO approved models: the ILT120B and the ILT120X. By improving the design of the cover and reinforcing the material with fiberglass, they now meet both the ISO 21487 and ISO 10088 standards.

ISO 10088 Small craft - Permanently installed fuel systems

This ISO standard requires a 120 mm inspection port in the fuel tank. This is not only regulated by law but is also a sensible fixture given the problems that possible fuel contamination can cause.

ISO 21487 Small craft - Permanently installed petrol and diesel fuel tanks

This mandatory standard for fuel tanks includes a stringent fire test, which both the ILT120B and ILT120X passed with ease! A unique performance, as we are the only company with a certificate for a standalone inspection port.

Customers who use our certified VETUS tanks together with one of these inspection ports will have an instantly approved system.

Both inspection ports have a counter flange and a rubber seal which are inserted into a Ø 159 mm hole in the tank. All that needs to be done is tighten the four supplied bolts which compresses the rubber seal to ensure perfect sealing. The "clamp and seal" design simplifies installation, making the drilling of a Ø 159 mm hole the hardest part of the installation! The black blind plate can be replaced by connection kit ILTCONF38.

ILT120B

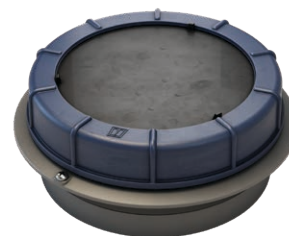
Suitable for (up to 10% bio)diesel tanks.

- Internal aperture: Ø 120 mm - Cut-out dimensions: Ø 159 mm
- Suitable for G.R.P., stainless steel and synthetic tanks with different wall thicknesses
- A hole saw is available separately. Article code: VSAW159

ILT120X

Suitable for petrol or (>10% bio)diesel fuel tanks.

- Viton gasket set for use with petrol or (>10% bio)diesel fuel
- Internal aperture: Ø 120 mm - Cut-out dimensions: Ø 159 mm
- Suitable for G.R.P., stainless steel and synthetic tanks with different wall thicknesses
- A hole saw is available separately. Article code: VSAW159



ILT120B

ILT120X



ILTCONF38

Fuel connection kit type ILTCONF38

This fuel connection disc will take care of all fuel related connections

- Ø 38 mm fuel fill connection
- Ø 8 / 10 mm fuel suction connection
- Ø 8 / 10 mm fuel return connection
- Ventilation connection Ø 16 mm
- 5 hole SAE flange tank level sensor connection
- Ø 8 mm suction connection for marine diesel heaters



WRILT

WRILT - ILT lid opener

To make the opening and closing of ILT lids easy and hassle-free, we have developed the WRILT, a well-designed lid opener to facilitate the motion of stubborn lids.

Type	Description	Diameter (mm)	Diameter hole (mm)
ILT120B	Inspection port with counter flange (ISO 10088 and ISO 21487 compliant)	120	159
ILT120X	Inspection port with counter flange and Viton ring, suitable for petrol and 10% >(bio)diesel (ISO 10088 and ISO 21487 compliant)	120	159
VSAW159	Ø 159 mm hole saw for ILT120. For synthetic, G.R.P. or metal tanks		159
ILTCONF38	Fuel connection kit		
ILTCON90	Ø 38 mm 90-degree fill connection elbow for ILTCONF38		
WRILT	Wrench for ILT120		