

Boat instruments

Type MPA1KB

This panel features a dedicated pre-heat / ignition switch with removable key. The panel can be used in isolation or combined with other 75 mm diameter panels by using the XTASF2P mounting frame shown below. Also suitable for use with the PWLK system.

To connect the MPA1KB to the MPA1MB and rest of the system use the MP35374 panel wiring.

Type	Colour	Cut-out size (Ø mm)	Dimensions (mm)	Built-in depth (mm)
MPA1KB	Black	75	85 x 85	120

MPA1KB



Type MPA1MB

This panel is equipped with six warning light and an acoustic alarm. The panel can be used in isolation or combined with other 75 mm diameter panels by using the XTASF2P mounting frame shown below. Also suitable for use with the PWLK system.

To connect the MPA1MB to the MPA1KB and rest of the system use the MP35374 panel wiring.

Type	Colour	Cut-out size (Ø mm)	Dimensions (mm)	Built-in depth (mm)
MPA1MB	Black	75	85 x 85	90

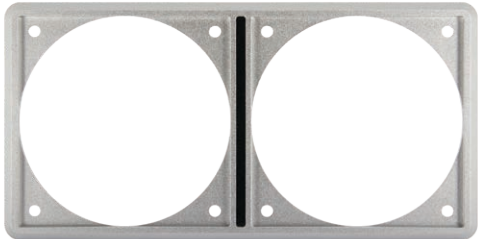
MPA1MB



Double mounting frame Type XTASF2P

This frame (167,5 x 85 mm) is designed to accept two VETUS control or monitoring panels with a cut out size of Ø 75 mm. You have the freedom to decide which panels you want to combine.

XTASF2P



Examples of combined Ø 75 mm panels.



XTASF2P + DBPPJA + MPA1KB



XTASF2P + MPA1MB + DBPPJA



XTASF2P + MPA1MB + MPA1MB