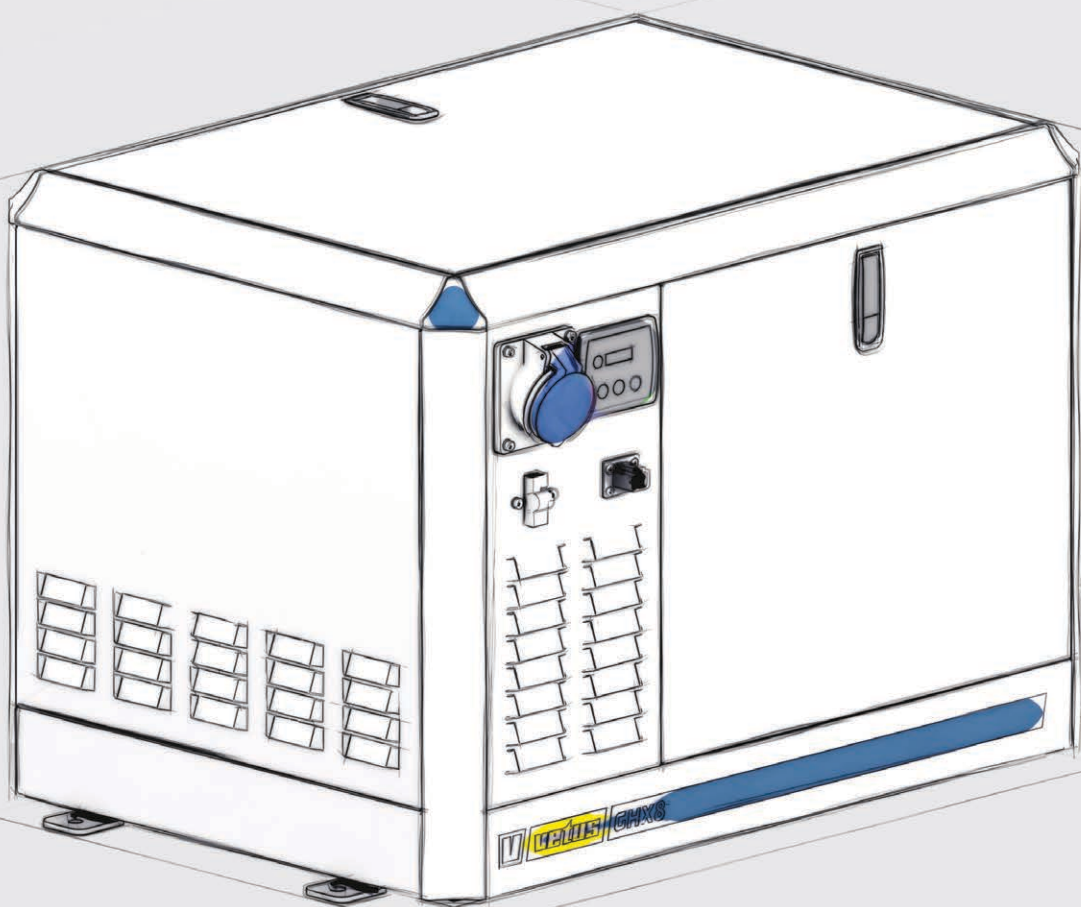




vetus

Power on board



Power on board

Overview

Diesel generator sets see page 270 - 271



GX

Battery chargers see page 272



BC

Battery splitters see page 272



BS150..C

Converters see page 273



Battery charger/maintainer see page 273



BC120517

Batteries see page 274 - 275



SMF



AGM



VEDC110TC

Accessories see page 276 - 278



ACCUSCH



BATSW250T



BATSW250



AFST1512D



BATT



Shore power see page 279 - 280



EOCABC5M



EOQSPW16S



EOQ1RCBO

Power on board

Power on board not only has an important role in creating comfortable living conditions, but also plays a vital part in safe operations. A pleasant stay on board is dependent on reliable electrical power. VETUS supplies a wide range of products that will exceed your expectations when it comes to power on board. Whenever you need power, you can rely on VETUS.

VETUS offers the following electrical system components

Gensets

Generator sets can be used in case when a high capacity power supply is needed. All VETUS generator sets are supplied with a complete exhaust and water intake system and a remote control panel as standard.

Batteries

VETUS offers three different types of batteries: SMF (Sealed Maintenance Free), AGM (Absorbed Glass Mat) and Deep Cycle Marine battery series. Deep Cycle Marine batteries are very low self discharge batteries designed to live up to the varying seasonal demands.

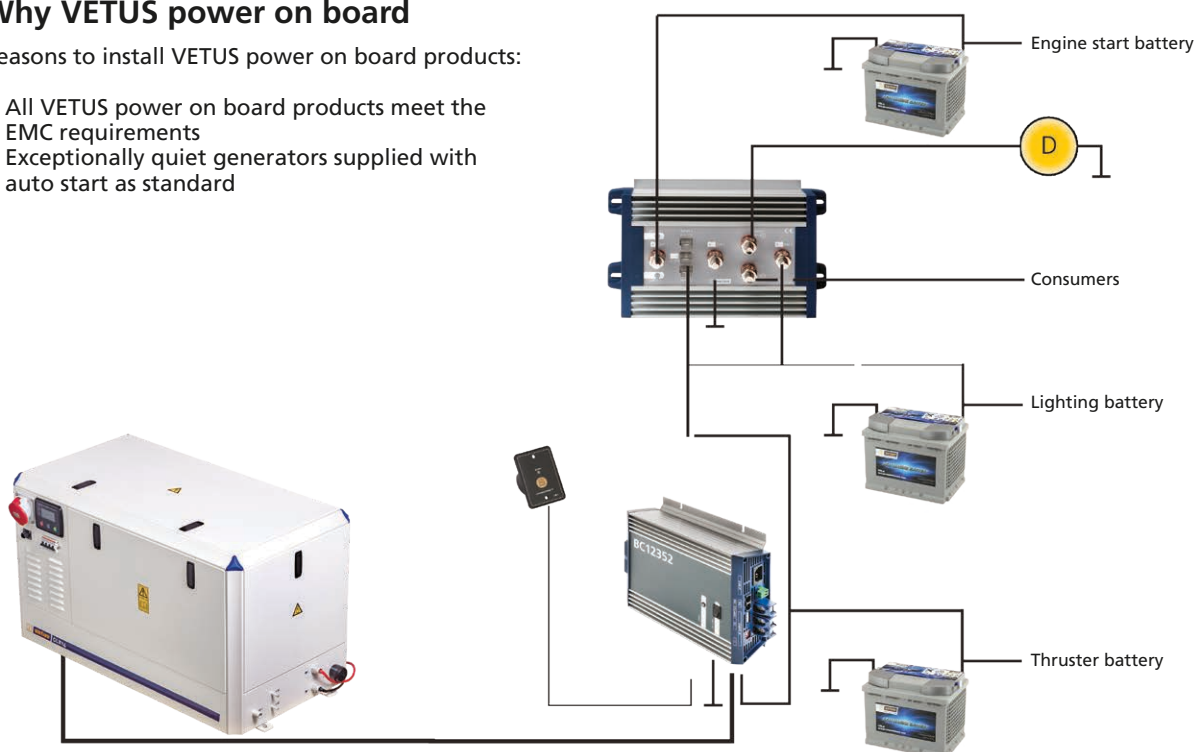
Battery chargers and splitters

Provide optimum simultaneous charging with lower cost, faster installation time, fewer cables and more space.

Why VETUS power on board

Reasons to install VETUS power on board products:

- All VETUS power on board products meet the EMC requirements
- Exceptionally quiet generators supplied with auto start as standard



Power on board

Diesel generator sets

GX series

Reliable, easy to maintain and exceptionally quiet!

VETUS GX generators range from 6,5 kVA to 24 kVA and are available in 50 or 60 Hertz. The base engines are carefully selected for power output and fuel economy, depending on the speed and output of the generator.

These high or low fixed speed gensets can be placed even in the most confined spaces because of their compact dimensions and lower weight. The high quality of design, insulation and finish of the generators used in this range, guarantee a long reliable life time and are especially designed for marine applications.

Characteristics

- Reliable, highly efficient, engines used are all marinised in-house
- Sturdy aluminium engine water cooled top cover acts as a sound barrier and thermal insulator
- Very stable sine wave with a low signal to noise ratio < 3% THD and overload protection
- Easy installation and maintenance - high serviceability!
- Pre-installed connections for battery cables, fuel supply / return, exhaust, raw water and air vent
- Remote control panel (MPRGEN) including 8 m cable are supplied as standard

MPRGEN



Specifications

- Gensets from 6,5 kVA to 24 kVA
- 50 or 60 Hertz output
- High speed (3000 / 3600 rpm) and low speed (1500 / 1800 rpm) models available
- Single phase (120 - 230 VDC) and three phase (240 - 400 VDC)
- Maximum voltage variance: plus or minus 2%
- Protection: IP55
- Max. ambient temperature: 40°C
- Max. raw water temperature: 30°C
- Noise level (GLX) with sound-proof box: 57 dB(A)
- Noise level (GHX) with sound-proof box: 65 dB(A) / 68 dB(A)
- Max. cont. angle of inclination:
fore and aft: 15° athwartships: 25°

All GX gensets are supplied with a digital control panel. An autostart function to start (and stop) the generator via external devices is standard included.



Intercooling/keelcooling

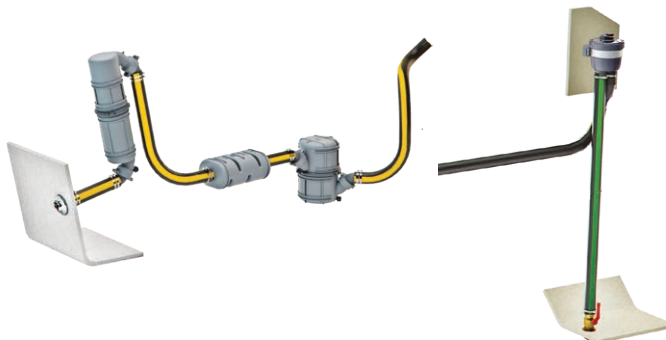
VETUS generator sets are standard supplied as an intercooled version. As an option we can supply our 14 and 20 kVA generator sets in a keelcooled version which is suitable to operate in shallow or dirty waters.

Standard scope of supply

All VETUS generator sets meet the EMC Low Voltage and machine requirements when installed in a sound proof box.

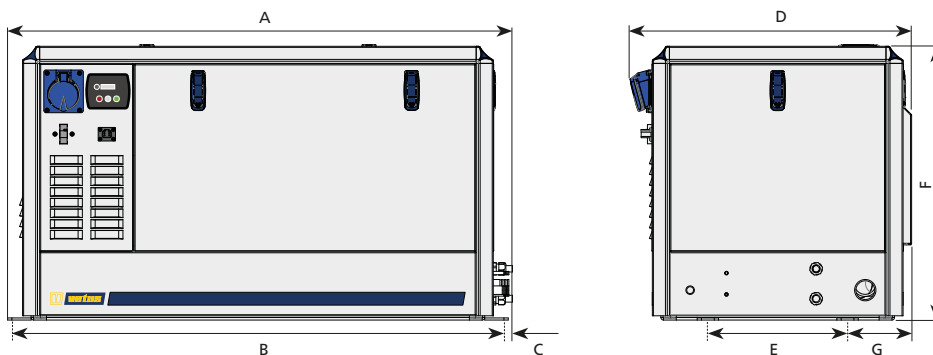
The around the engine package consists of: a waterlock, muffler, goose neck, transom connection, 3 m exhaust hose, ten hose clamps, water filter type FTR330, waterfilter kit WKIT and remote control panel MPRGEN.

Keelcooled generator sets are supplied only with a remote control panel.





Diesel generator sets



Dimensions

	GLX 6/7 SIC/TIC	GHX 8/9 SIC/TIC	GHX 14/17 SIC	GHX 14/17 TIC	GLX 14/17 SIC	GLX 14/17 TIC	GLX 20/24 TIC
A (mm)	927	884	1082	1082	1172	1172	1332
B (mm)	887	844	1042	1042	1132	1132	1292
C (mm)	20	20	20	20	20	20	20
D (mm)	657	659	659	659	659	659	739
E (mm)	297	327	327	327	327	327	407
F (mm)	644	571	641	641	641	641	694
G (mm)	165	150	150	150	150	150	150

Type	Power (kVA)	Engine speed (rpm)	Frequency (Hz)	Phase	Voltage (DC)	Weight (kg)	Engine type
50 Hertz							
GHX8SIC	8	3000	50	Single	230	185	M2.18
GHX14SIC	14	3000	50	Single	230	295	M3.29
GHX14TIC	14	3000	50	Three	3 x 230/400	295	M3.29
GLX6,5SIC	6	1500	50	Single	115 or 230	245	M3.29
GLX14SIC	14	1500	50	Single	115 or 230	395	M4.45
GLX14TIC	14	1500	50	Three	3 x 230/400	395	M4.45
GLX14TKC	14	1500	50	Three	3 x 230/400	395	M4.45
GLX20TIC	20	1500	50	Three	3 x 230/400	465	VH4.65
GLX20TKC	20	1500	50	Three	3 x 230/400	465	VH4.65

Other frequencies and voltages on request.



Power on board

Battery chargers

Type BC

Especially designed for marine use

These battery chargers have a four stage IUoU charge programme: In the first bulk charge stage, the battery receives a continuous maximum current charge. Once the battery is recharged to approximately 75% of its full capacity, the charger switches automatically to a constant voltage absorption stage for the remaining 25%.

When the battery is fully charged, the charger will maintain this charge phase for 15 minutes (providing the charge is under 6.25% of the full charge current) and then switches to the float charge stage. In this stage the battery charger maintains the full charge without overloading the battery. It compensates for self-discharge and "floats" any loads on the battery.

After the float stage of twelve days, the charger implements the final reconditioning stage. In this stage the charger will switch to the bulk stage for 85 minutes only to ensure that the battery stays in optimum condition. The maximum charge voltage can be adjusted to all battery types due to easy access DIP switches. These chargers are suitable for all AC power sources from 90 V to 265 V. The active Power Factor Correction feature prevents of any unwanted line disturbances.

These chargers are compatible with Lead Acid, Li-ion, Gel, AGM and Deep Cycle batteries, have a separate alarm contact and variable fan speed for comfort reasons. BC12151, BC12252 and BC12352 includes a 2A maximum output trickle charger.

Specifications

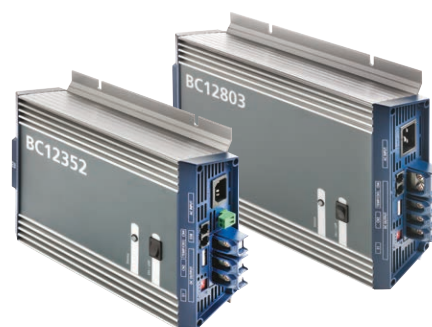
- Universal AC input with active PFC (90 - 264 VAC)
- Compatible with Lead Acid, Li-ion, Gel and Deep Cycle batteries
- Voltage/temperature compensation
- High efficiency and high reliability
- Protection against short circuit/over voltage/over temperature

Options

- Remote control panel type BCRC
- Battery temperature sensor BCTS

BC12...

BC24...



Type	Dimensions W x H x D (mm)	Standard Boost Charge Voltage (DC)	Standard Float Charge Voltage (DC)	Max Rated Current (A)	Single Output Current Limit (A)	Number of Outputs
BC12252	205 x 84 x 259	14.4 / 14.7	13.8 / 13.5	25	25	2 (1)
BC12352	205 x 87 x 279	14.4 / 14.7	13.8 / 13.5	35	35	2 (1)
BC12503	237 x 90 x 288	14.4 / 14.7	13.8 / 13.5	50	40	3
BC24253	237 x 90 x 288	28.8 / 29.4	27.6 / 27	25	25	3
BC12803	237 x 90 x 328	14.4 / 14.7	13.8 / 13.5	80	40	3
BC24403	237 x 90 x 328	28.8 / 29.4	27.6 / 27	40	40	3

Battery splitter

For optimal charging and maintenance

VETUS battery splitters charge two or three battery banks simultaneously from any charging source with having negligible voltage drop due to the use of mosfet transistors instead of diodes. One discharged battery cannot discharge another battery. This battery splitter ensures automatic distribution of the charging current from the alternator and/or battery charger. At the start of the engine, the alternator will automatically recharge all battery banks. VETUS battery splitters have an auxiliary connection which gives feedback to voltage sensed alternators.

Specifications

- Suitable for 12 and 24 VDC installations, two to three battery banks, one or two alternators
- Maximum charging current 150A
- Input 8-30 VDC

Type	Number of inputs	Number of outputs	Maximum charging current (A)	Input Voltage (DC)	Weight (kg)
BS1502C	1	2	150	8-30	1,0
BS1503C	1	3	150	8-30	1,2
BS15032C	2	3	150 (2x)	8-30	1,3



BS1502C

BS1503C

BS15032C



Converters

Type IV2412360 - IV4812360

Specifically designed for the demands of V-CAN and NMEA2000 Lines

VETUS converters are developed to convert the 24 or 48 VDC from the battery bank to a stable 12 VDC output, ensuring that the low-voltage communication lines of your vessel are properly powered by the correct voltage. Through a flawless integration, VETUS converters meet the technical requirements of other VETUS products, such as thrusters and E-propulsion systems, in all operating conditions.

Specifications

- Nominal Input voltage: 24 VDC and 48 VDC
- Stable 12 VDC output for CAN bus power supply
- Easy installation with Faston 6.3 mm terminals
- Protected against high temperatures due to fan-cooling
- Wide operating temperature range, from -10 °C up to 40°C (14°F - 104°F)
- Compatible with other equipment brands up to 360 Watts
- Output of 360 Watts (15A); compatible to other equipment brands



IV2412360

IV4812360

Type	Nominal input (VDC)	Output range (VDC)	Max output power (W) / current (A)	Continuous output power (W) / current (A)	Dimensions (mm)
IV2412360	20 - 35	12	360 / 30	360 / 30	83 x 190 x 133
IV4812360	30 - 60	12	360 / 30	360 / 30	83 x 190 x 133
IV1224360	9 - 18	24	360 / 15	360 / 15	83 x 190 x 133
IV2424360	20 - 35	24	360 / 15	360 / 15	83 x 190 x 133

Trickle charger / battery maintainer

Type BC120517

Intelligent charging in seven stages

BC120517 controls the battery charging in seven stages ensuring optimal performance from your batteries. It has an Ingress Protection Rating IP65, so it is dust, splash and rainproof. The charger is supplied with two connection leads, terminating with either crocodile clips or ring terminals.

Stage 1 Desulfation; reduces battery sulfation

Stage 2 Soft start

Stage 3 Bulk charge

Stage 4 Absorption

Stage 5 Battery test

Stage 6 Recondition

Stage 7 Float

Specifications

- Dimensions L 160 x W 960 x H 540 mm
- Weight 0,85 kg
- Ambient temperature -20° to +50°C
- AC Voltage input 220-240 VAC, 50/60Hz
- DC output 12 VDC - 5,0 A



BC120517

Type	Description
BC120517	7-stage battery charger/maintainer

Power on board

VETUS batteries

Specially designed for pleasure craft use

VETUS batteries are designed for seasonal use. VETUS batteries have a minimal rate of self-discharge and will therefore start easily when the new boating season starts. We strongly advise the use of a float charger during winter storage. VETUS batteries can supply both small constant loads as well as heavy but short loads for the use of, for example, a bow thruster. VETUS offers three different marine battery models, each with their own characteristics. To help you select the best battery for your purpose, please consult the battery selection chart.

Battery selection chart

	SMF	AGM	VEDC110TC
Application	Marine Battery	Marine Battery	Marine Battery
Engine starting	✓✓✓✓	✓✓✓✓	✓✓✓✓
Generator starting	✓✓✓✓	✓✓✓✓	✓✓✓✓
Bow thruster	✓✓✓	✓✓✓	✓✓✓✓
Anchor windlass	✓✓✓✓	✓✓✓✓	✓✓✓✓
Pumps	✓✓✓	✓✓✓	✓✓✓✓
Use with inverter	✓	✓✓✓	✓✓✓✓
Refrigeration	✓	✓✓✓	✓✓✓✓
Air conditioning	✓	✓✓✓	✓✓✓✓
Lighting	✓	✓✓✓	✓✓✓✓
Electric propulsion	✓	✓✓✓✓	✓✓✓✓

✓ - Not recommended ✓✓ - Suitable ✓✓✓ - Recommended ✓✓✓✓ - Highly recommended



Battery selection chart

	SMF Marine Battery	AGM Marine Battery	VEDC110TC Marine Battery
General			
Maintenance free	✓	✓	✓
Deep discharge	-	✓	✓✓
Average life span	5-6 years	6-8 years	5-6 years
Number of cycles - % of discharge	350 - 35%	500 - 75%	+400 - 75%
Self discharge	< 3% per month	< 3% per month	< 3% per month
Electrolyte	Wet acid	Absorbed glass mat	Wet acid
Plate materials	Lead - calcium	Lead - calcium	Lead - calcium
VRLA (pressure relief vent)	-	✓	-
Series connection allowed	✓	✓	✓
Parallel connection allowed	✓	✓	✓
Safe transportation	-	✓	-
Maximum angle in use	55°	55°	55°
Maximum installation angle	0°	0°	0°
Charging with standard charger	✓	✓	✓

The SMF (Sealed Maintenance Free) series

Maintenance free, no need to be refilled!

- Sealed and maintenance free
- Lids which internally re-generate any gas that occurs during use or charging
- Construction based on use of lead-calcium plates which reduce water usage
- Models VESMF60, 70, 85 and 105 are equipped with a 'magic eye' which indicates the state of charge
- Manufactured in the EU





VETUS batteries

The AGM (Absorbed Glass Mat) series

Multipurpose marine batteries with long life spans

- Sealed VRLA (Valve Regulated Lead Acid) and maintenance free (does not contain any free electrolyte)
- Electrolyte is absorbed by glass fibre mat separators between battery plates
- Leakage-free even when the battery is dropped and the casing is damaged
- Battery can even be shipped by airfreight
- Manufactured in the EU



Specifications VETUS SMF batteries

Type	VESMF60	VESMF70	VESMF85	VESMF105	VESMF125	VESMF145	VESMF165	VESMF200	VESMF220
VDC	12	12	12	12	12	12	12	12	12
Capacity C20	60 Ah	70 Ah	85 Ah	110 Ah	125 Ah	150 Ah	170 Ah	200 Ah	230 Ah
Cold Cranking Amps CCA (EN)	540 A	640 A	700 A	750 A	800 A	900 A	1050 A	1200 A	1300 A
Reserve capacity in minutes at 25A	96	116	138	160	210	250	315	400	445
Dimensions LxBxH (mm)	242x175x175	278x175x175	353x175x175	345x175x230	513x189x220	513x223x223	513x223x223	514x276x242	514x276x242
Weight (kg)	13,9	16,3	19,8	24	33,2	38,7	42,2	54,2	56,2
BATBOX	S	M	L	L	-	-	-	-	-

Specifications VETUS AGM marine batteries

Type	VEAGM60	VEAGM70	VEAGM90	VEAGM100	VEAGM140	VEAGM170	VEAGM185	VEAGM220
Voltage (DC)	12	12	12	12	12	12	12	12
Capacity C20	60 Ah	70 Ah	90 Ah	100 Ah	135 Ah	170 Ah	195 Ah	220 Ah
Capacity C5	45 Ah	52 Ah	67 Ah	85Ah	110 Ah	130 Ah	145 Ah	170 Ah
Cold Cranking Amps CCA (EN)	640 A	760 A	860 A	760 A	1000 A	1100 A	1200 A	1400 A
Reserve capacity in minutes at 25A	110	130	175	180	260	300	350	430
Dimensions LxBxH (mm)	242x175x190	278x175x190	353x175x190	345x175x230	513x189x223	513x223x223	514x274x242	514x274x242
Weight (kg)	18,6	21,2	27,8	26,8	40,7	46,6	56,2	60,7
BATBOX	S	M	L	L	-	-	-	-

VETUS Deep Cycle battery

Deep cycle batteries are ideal applications such as electric propulsion. The VEDC110TC is a "Deep Cycle / Semi-traction" battery featuring two different connections. One set of conventional tapered battery clamp connections and one set of threaded connection (5/16") for cable lugs. Thicker plates inside the battery allow deeper discharging (up to 75%) compared to conventional batteries and can be used for cyclic applications and therefore be suitable for electric boating. The VEDC110TC battery is based on a Sealed Maintenance Free battery, so the same battery chargers are applicable.



Specifications VEDC110TC

Type	
VDC	12
Capacity C20	110 Ah
Capacity C5	90 Ah
Cold Cranking Amps CCA (EN)	700 A
Reserve capacity in minutes at 25A	200
Dimensions LxBxH (mm)	330x175x235
Weight (kg)	28
BATBOX	L

Specifications

- Suitable for heavy use over a longer period of time
- Two different connections
- Thicker battery plates
- Dischargeable up to 75%
- Compact
- Very suitable for electric propulsion or as a service battery
- Manufactured in the EU

Power on board

Accessories

Battery boxes type BATBOX

For all VETUS batteries

VETUS battery boxes are made of polypropylene and are available in three different sizes.

Type		Internal dimensions LxBxH (mm)	Recommended battery box by battery
BATBOXS	Battery box - small	255 x 180 x 195	VESMF60 - VEAGM60
BATBOXM	Battery box - medium	350 x 180 x 195	VESMF70 - VEAGM70
BATBOXL	Battery box - large	360 x 175 x 230	VESMF85 - VESMF105 - VEAGM90 - VEAGM100



BATBOX

Battery selector switch type ACCUSCH

Famous for its multifunctional use

Depending on the switch pattern, battery 1 or battery 1 and 2 or battery 2 only will be enabled from the OFF position. The ACCUSCH switch is suitable for batteries in both single and parallel installation which can be selected and secured by turning the red button. The ACCUSCH allows you to choose which battery can be used for which service. In case this battery is discharged or defective, the other battery can be selected. The battery switch is suitable for usage and charging of starter and domestic batteries. The switch will "make before break" and so battery selection is possible even with the engine running (does not go through the "Off" position).

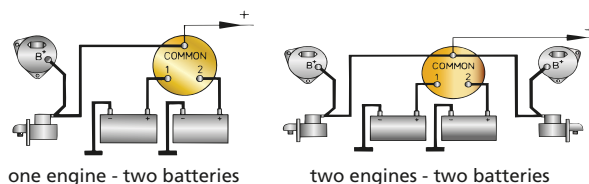


ACCUSCH

Specifications

- Capacity at 6, 12, 24 or 48 VDC
- Continuous 175A / interval 300A
- Dimensions 135 x 135 x 75 mm

Type	Description
ACCUSCH	Battery selector switch



Battery main switches type BATSW

Twin pole switching

BATSW can be connected to either the positive or the negative electric cable. Two positions: "ON" and "OFF". In the "OFF" position the key may be removed (except models 150 and 600). Provided with two M10 connectors. Model 250T is a twin pole switch to make/break both the positive and negative cables. Model 600 is watertight according to IP 67.



BATSW075

BATSW100

BATSW150R

BATSW250

BATSW250T

BATSW600

Type	BATSW075	BATSW100	BATSW150R	BATSW250	BATSW250T	BATSW600
Nominal operational (VDC)	max. 48	max. 48	max. 48	max. 48	max. 48	max. 48
Current max.:						
- Continuous operation	75 A	100 A	150 A	250 A	2 x 250 A	450 A
- 3 minutes' load						800 A
- 5 seconds' load	350 A	500 A	1000 A	2500 A	2 x 2500 A	3500 A



Accessories

Fuses and fuse holder type ZE

ZEHC is a fuse holder which is suitable for VETUS fuses (ZE) of 40-500A which match fuses encapsulated in glass to prevent splatter and fire. The fuse holder comes with a protector cover.

Note: ZEHC can also be used in combination with strip fuses type ZE (slow-blow fuse).



ZEHC100



ZE

Type	Description
ZEHC100	Fuse holder, type C100 including cover

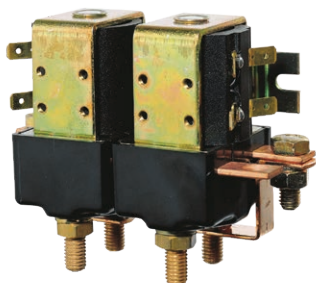
Type	Description	Amp.
ZE040	Strip fuse C20	40
ZE050	Strip fuse C20	50
ZE063	Strip fuse C20	63
ZE080	Strip fuse C20	80
ZE100	Strip fuse C20	100
ZE125	Strip fuse C20	125
ZE160	Strip fuse C20	160

Type	Description	Amp.
ZE200	Strip fuse C20	200
ZE250	Strip fuse C20	250
ZE300	Strip fuse C20	300
ZE355	Strip fuse C20	355
ZE425	Strip fuse C20	425
ZE500	Strip fuse C20	500

Make/break relay - solenoid type AFSTD and SOL

Two models make/break relays, AFSTD and SOL, which can be used to reverse the rotation direction of an electric motor (e.g. windlass) with a maximum output of 1.5 kW at 12 VDC, 3 kW at 24 VDC and 6 kW at 24 VDC (type AFST624D).

* Type SOL is watertight to IP66.



AFST1512D

SOL1512D*

SOL324D*

AFST324D

AFST624D

Type	Description	VDC / Watt	Terminals
AFST1512D	Dual make/break relay	12 / 1500	M8
SOL1512D	Dual make/break relay	12 / 1500	M6
SOL324D	Dual make/break relay	24 / 3000	M6
AFST324D	Dual make/break relay	24 / 3000	M8
AFST624D	Dual make/break relay	24 / 6000	M10

Single relay - solenoid type AFSTS and SOL

In case an electric motor has two field windings, two single relays can be used to operate the motor in either direction.

* Type SOL is watertight to IP66.



AFST1512S

SOL1512S*

SOL324S*

AFST324S

AFST624S

Type	Description	VDC / Watt	Terminals
AFST1512S	Single relay	12 / 1500	M8
SOL1512S	Single relay	12 / 1500	M6
SOL324S	Single relay	24 / 3000	M6
AFST324S	Single relay	24 / 3000	M8
AFST624S	Single relay	24 / 6000	M10

Power on board

Accessories

Battery cables type BATC

VETUS battery cables are extremely flexible and have a PVC insulation jacket with a temperature range of -20° to +85°C. Battery cables are available in black for negative and red for positive direct current with a cross sectional area of 6, 10, 35, 50, 70, 95 or 120 mm².

Note: Matching battery cable tags should be ordered separately (type BATCC).



Type	Cross sectional area (mm ²)	Colour
BATC06M	6	Black
BATC10M	10	Black
BATC35	35	Black
BATC50	50	Black
BATC70	70	Black
BATC95	95	Black
BATC120	120	Black

Type	Cross sectional area (mm ²)	Colour
BATC06RM	6	Red
BATC10RM	10	Red
BATC35R	35	Red
BATC50R	50	Red
BATC70R	70	Red
BATC95R	95	Red
BATC120R	120	Red

Cable lugs for battery cables type BATCC



Type	For cable cross sections (mm ²)	Hole	Qty per set
BATCC0606	6	M6	10
BATCC0608	6	M8	10
BATCC0610	6	M10	10
BATCC1006	10	M6	10
BATCC1008	10	M8	10
BATCC1010	10	M10	10
BATCC3506	35	M6	2
BATCC3508	35	M8	2
BATCC3510	35	M10	2
BATCC5006	50	M6	2
BATCC5008	50	M8	2

Type	For cable cross sections (mm ²)	Hole	Qty per set
BATCC5010	50	M10	2
BATCC7006	70	M6	2
BATCC7008	70	M8	2
BATCC7010	70	M10	2
BATCC9508	95	M8	2
BATCC9510	95	M10	2
BATCC9512	95	M12	2
BATCC1210	120	M10	2
BATCC1212	120	M12	2
BATCC1510	150	M10	2
BATCC1512	150	M12	2

Battery terminal sets type BATT

Suitable for cables with cross sections of 16 - 35 mm² / 50 - 95 mm² up to 150 mm². Supplied with a M10 bolt for a cable up to 150 mm². Made of tinned brass with a stainless steel nut and bolt.

Type	Description
BATT1635	Terminal set for cable 16 - 35 mm ² , set of 2
BATT5095	Terminal set for cable 50 - 95 mm ² , set of 2
BATT150	Terminal with M10 bolt, for cable up to 150 mm ² , set of 2





Shore power

The shore connection system consists of two sets of similar accessories: the first one consists of products to ensure a good shore connection quality and the second one consists of quick connecting parts to minimize installation time to fit a shore connection on your boat. In order to save time, please only select quick connect parts.

Shore connection parts

Shore cables

Type	Description	Length (m)	Max. rating
EOCABC5M	CEE shore power cable IP44, H07BQ-F 3G 2,50 mm² PUR	5	16A
EOCABC15M	CEE shore power cable IP44, H07BQ-F 3G 2,50 mm² PUR	15	16A
EOCABX15M	CEE-CEE extension power cable, H07BQ-F 3G 2,50mm² PUR	15	16A



EOCABC5M

EOCABX15M

EOCABC15M

Adapter cord set

Type	Description
EOADAP	CEE-Schuko EURO adapter cable 16A, cable length 0,3 m



EOADAP

Shore power cord dock / rail clip

Type	Description
EOCLDSET	Dock clip shore power 16A cable (set of 6 pieces) incl. mounting screws
EOCLRSET	Rail clip shore power 16A cable (set of 6 pieces)



EOCLDSET



EOCLRSET

Shore power inlets

Type	Description
EOSPW16S	Shore power wall inlet 16A, polished IP56, flush mounted Stainless steel AISI 316
EOSPW16W	Shore power wall inlet 16A, white IP56, flush mounted Polyamide



EOSPW16S



EOSPW16W

Shore power inlets quick connect system

Type	Description
EOQSPW16S	Quick connect - Shore power wall inlet 16A, polished IP56, flush mounted Stainless steel AISI 316
EOQSPW16W	Quick connect - Shore power wall inlet 16A, white IP56, flush mounted Polyamide



EOQSPW16S



EOQSPW16W

RCBO cabinet

Type	Description
EO1RCBO	Electrical cabinet RCBO single Schuko wall socket 30mA/16A Housing IP65



EO1RCBO



Power on board

Shore power

RCBO cabinet quick connect

Type	Description
EOQ1RCBO	Quick connect - Electrical cabinet RCBO, 30mA/16A Housing IP65

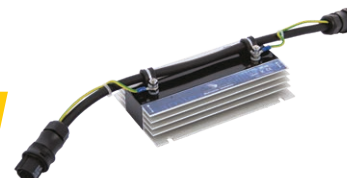
EOQ1RCBO



Galvanic isolator quick connect

Type	Description
EOQISOLA	Quick connect - Galvanic isolator. Max. rating 16A

EOQISOLA



Splitter quick connect

Type	Description
EOQSPLIT	Quick connect system splitter 1 to 3. Max. rating 16A

EOQSPLIT



Extension cables quick connect

Type	Description	Length (m)	Max. rating
EOQCABX1M	Quick connect system extension cable 1 m 20A, H07RN-F 3G 2,50 mm ²	1	20A
EOQCABX3M	Quick connect system extension cable 3 m 20A, H07RN-F 3G 2,50 mm ²	3	20A
EOQCABX5M	Quick connect system extension cable 5 m 20A, H07RN-F 3G 2,50 mm ²	5	20A

EOQCABX1M



Wall socket

Type	Description
EOW1RFS	Schuko wall socket 16A, polished steel

EOW1RFS



Wall sockets quick connect

Type	Description
EOQW1NFW	Quick connect - Schuko wall socket 16A, white flush mounted
EOQW1NFB	Quick connect - Schuko wall socket 16A, black flush mounted

EOQW1NFW



EOQW1NFB



EOQW1RFS



EOQW2NSG



Type	Description
EOQW1RFS	Quick connect - Schuko wall socket 16A, polished IP56, flush mounted, Stainless steel AISI 316

Type	Description
EOQW2NSG	Quick connect - Schuko wall socket 16A, grey IP55, wall mounted