

Boat instruments

Overview

Engine instrument panels see page 139 - 143



MPA10



MPA1XTKMB



MPA22B



MPA1XB



MPA34B



MP22KB



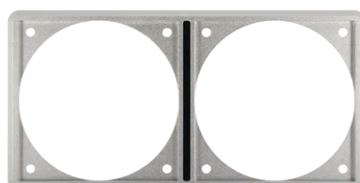
XTPAN252A



MPA1KB



MPA1MB



XTASF2P



CANJ2N1

NEW!

Dashboard gauges see page 144 - 146



TACH



XHI



TRIM



TEMP



HOUR



VLT



AMP



OIL



WAST



FUEL



WATER



Rudder position sending units see page 147



RUDD



RUDD.40



RUDDS



RUDDHD

NEW!



CANNRUDDS

Tank senders / sensors see page 148 - 150



SENSOR



WWSENSOR



FSENSOR



SENSORA



WWCP



SENSORD

NEW!



CANNFLS

Switch panels see page 150 - 151



P8FA



P6CB



P6F



P12F



P12CB

Detectors see page 152



GD1000



GSENSOR



PD1000

Boat instruments

Why VETUS Boat instruments?

Panels

VETUS offers a complete range of high quality panels, ranging from the stylish aluminium panels type MPA, available in different models, to the standard synthetic instrument panels type MP. For both models extended instrument panels are available for additional gauges. For common-rail engines a CAN bus instrument panel type MP34CANBS can be supplied. All VETUS instrument panels will be supplied pre-wired for easy installation.

VETUS gauges

For an optimal overview of your boats' (vital) functions, you can choose from a wide range of VETUS double-glazed gauges, ranging from gauges to monitor all functions of your engine, like a tachometer, volt meter, oil pressure and water temperature gauge to gauges to check the bow thruster, fuel, water and waste water tanks. All VETUS instruments meet the EMC requirements and are thoroughly tested by our R&D department.

Our range of boat instruments includes:

- Engine instrument panels
- E-DRIVE panels (see page 82)
- Bow and stern thruster control panels (see page 240)
- Switch panels
- Detectors and sensors
- Windscreen wiper control panels (see page 330)
- Gauges, sensors and wiring harnesses

Five good reasons to choose VETUS boat instruments

- 1. Highly accurate instrument and gauges**
Meticulously control and monitor every function of your boat. Suitable for most vessels, as each instrument can be calibrated individually.
- 2. Reliable and durable products**
All panels and gauges are tested in-house to guarantee highly reliable and long lasting products, even in the toughest environments. All instruments are **double glazed** to minimise condensation.
- 3. Good readability**
The translucent dials are backlit with bright dimmable and switchable bi-colour LEDs, offering high contrast, good readability and the ability to colour match your existing cockpit illumination.
- 4. OEM looks**
Gauges are supplied with two bezels: solid black and chrome to match your existing interior.
- 5. Standardised dimensions**
VETUS panels and gauges are engineered to fit factory cut-outs for easy retrofit. Large instruments have an overall diameter of Ø 114 mm and fit a cut-out of Ø 100 mm. Small instruments have an overall diameter of Ø 63 mm and fit a cut-out of Ø 52 mm. Both large and small instruments have a 10 mm height and will match your other gauges perfectly.





Type MPA

Stylish aluminium engine panels

Thanks to their stylish appearance and quality materials, these engine panels are an upgrade for your dashboard. The panels are made from marine grade anodized aluminium with a textured foil facing, which gives a classy look.

All 52 mm gauges can be installed on the helm or flybridge station according to your own taste and design or used in combination with the VETUS extension panel MPA1XB.

Specifications

- More accurate sensor reading on the instrument panels
- More accurate alarms for the oil pressure and oil temperature
- No need to set the alarm manually
- Less parts as functions of STM6911 are integrated in the PCB
- Easy installation
- Available with black or white gauges
- Supplied with gaskets and mounting screws
- Plug and play
- Splash proof (IP 64)

Customisation

All VETUS aluminium instrument panels can be supplied with your company logo or supplied in other colours, depending on the quantity. Prices available upon request.

Type MPA10 and MPA1XTKMB

MPA10 instrument panels have six warning lights, an acoustic alarm, a pre-heat/ignition switch with a removable key. The MPA10 and MPA1 instrument panels have a small footprint, suitable for limited space and can be installed either horizontally (167,5 mm x 85 mm) or vertically (85 mm x 167.5 mm).

Type	Dial colour	Dimensions (mm)	Built-in depth (mm)	Voltage (DC)
MPA10	Black	100 x 154	120	12
MPA1XTKMB	Black	167,5 x 85	120	12



MPA10



MPA1XTKMB



Boat instruments

Type MPA22

The MPA22 instrument panel has six warning lights, acoustic alarm, pre-heat/ignition switch with removable key, combined revolution/hour counter and a voltmeter.

Type MPA1XB

The MPA1XB extension panel is suitable for all VETUS 52 mm gauges.



MPA22B



MPA1XB

Type	Description	Dial colour	RPM	Dimensions (mm)	Built in depth (mm)	Voltage (DC)
MPA22KBS2	Aluminium engine panel	Black	0-4000	218 x 157	120	12
MPA22KBS25	Aluminium engine panel	Black	0-5000	218 x 157	120	12
MPA22KBW2	Aluminium engine panel	White	0-4000	218 x 157	120	12
MPA22KW25	Aluminium engine panel	White	0-5000	218 x 157	120	12
MPA1XB	Aluminium extension panel for two extra gauges	Black		100 x 154	100	

Type MPA34

The MPA34 instrument panel has six warning lights, acoustic alarm, pre-heat/ignition switch with removable key, combined revolution/hour counter, temperature gauge, oil pressure gauge and a voltmeter.



MPA34B

Type	Description	Dial colour	RPM	Dimensions (mm)	Built in depth (mm)	Voltage (DC)
MPA34KBS2	Aluminium engine panel	Black	0-4000	267 x 157	120	12
MPA34KBW2	Aluminium engine panel	White	0-4000	267 x 157	120	12
MPA34KBS25	Aluminium engine panel	Black	0-5000	267 x 157	120	12
MPA34KBW25	Aluminium engine panel	White	0-5000	267 x 157	120	12
MPA34CANBS2	Aluminium engine panel CAN-bus	Black	0-5000	267 x 157	120	12
MPA34CANBS4	Aluminium engine panel CAN-bus	Black	0-5000	267 x 157	120	24



Type MP22KB

The MP22KB instrument panel has six warning lights, combined revolution/hour counter, acoustic alarm and pre-heating/ starter switch with removable key. This panel is ideal for installation on a fly-bridge. After mounting, the panel is splash proof from front face (IP 64).

Type	Dial colour	RPM	Dimensions (mm)	Built-in depth (mm)	Voltage (DC)
MP22KBS2	Black	0-4000	193 x 161	121	12
MP22KBS2D 2nd alternator	Black	0-4000	193 x 161	121	12



MP22KB..

Type MP34KB

The MP34KB instrument panel has six warning lights, acoustic alarm, pre-heating/starter switch with removable key, combined revolution/hour counter, temperature gauge, voltmeter and oil pressure gauge. After mounting, the panel is splash proof from front face (IP 64).

Type	Dial colour	Rpm	Dimensions (mm)	Built-in depth (mm)	Voltage (DC)
MP34KBS2	Black	0-4000	255 x 161	121	12
MP34KBW2	White	0-4000	255 x 161	121	12
MP34KBS4	Black	0-4000	255 x 161	121	24



MP34KB..

Type XTPAN252A

The XTPAN252A is an extension panel and is suitable for all VETUS 52 mm gauges.

Type	Dial colour	Dimensions (mm)
XTPAN252A	Black	99 x 161



XTPAN252A



Boat instruments

Type MPA1KB

This panel features a dedicated pre-heat / ignition switch with removable key. The panel can be used in isolation or combined with other 75 mm diameter panels by using the XTASF2P mounting frame shown below. Also suitable for use with the PWLK system.

To connect the MPA1KB to the MPA1MB and rest of the system use the MP35374 panel wiring.

Type	Colour	Cut-out size (Ø mm)	Dimensions (mm)	Built-in depth (mm)
MPA1KB	Black	75	85 x 85	120

MPA1KB



Type MPA1MB

This panel is equipped with six warning light and an acoustic alarm. The panel can be used in isolation or combined with other 75 mm diameter panels by using the XTASF2P mounting frame shown below. Also suitable for use with the PWLK system.

To connect the MPA1MB to the MPA1KB and rest of the system use the MP35374 panel wiring.

Type	Colour	Cut-out size (Ø mm)	Dimensions (mm)	Built-in depth (mm)
MPA1MB	Black	75	85 x 85	90

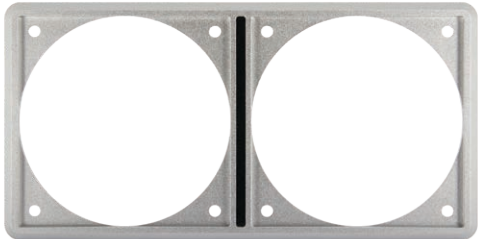
MPA1MB



Double mounting frame Type XTASF2P

This frame (167,5 x 85 mm) is designed to accept two VETUS control or monitoring panels with a cut out size of Ø 75 mm. You have the freedom to decide which panels you want to combine.

XTASF2P



Examples of combined Ø 75 mm panels.



XTASF2P + DBPPJA + MPA1KB



XTASF2P + MPA1MB + DBPPJA



XTASF2P + MPA1MB + MPA1MB



J1939 to NMEA2000 converter

The J1939 to NMEA2000 converter reads the J1939 protocol and translates that to NMEA2000 PGN's. This converter can be used for the D-Line engine range of which the engine data can be displayed on VETUS or other MFD's.

Specifications

- 0-16V operating Voltage
- <50mA operating current
- IP65 rating

Type	Description
CANJ2N1	J1939 to NMEA2000 converter



NEW!

CANJ2N1

Design your own panel with the "PWLK" system

Many designers and installers wish to lay out their own instrument panel, rather than using a standard panel supplied by the engine manufacturer. This can be easily accomplished using the PWLK system.

Advantages

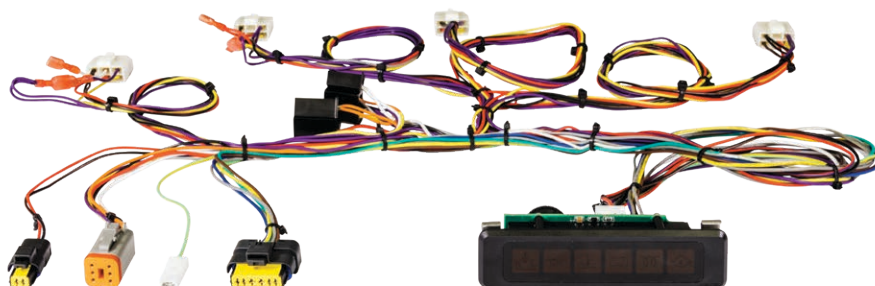
- Choose your own instruments, black, cream or white and for 12 or 24 VDC supply
- All cables are bundled and colour coded: no more tracing loose wires
- Cable plugs and connectors are factory fitted, ready to connect to VETUS engine instruments
- The instruments can be positioned up to 50 cm away from the key switch

Standard system

- Monitoring panel (130 x 35 mm) with six warning lights
- Acoustic alarm
- Glow plug pre-heat and starting key switch
- Cable for tachometer (revolution counter/hour counter)
- Cables for voltmeter, oil pressure gauge, water temperature gauge
- Plugs for connection of extension cables

Optional equipment to complete the system

- Extension cable to the engine, available in 2, 4 or 6 metre length
- Cable splitter to connect to a second panel
- Revolution counter / hour counter
- Voltmeter, oil pressure gauge, water temperature gauge



PWLK

Type	Description
PWLK	Wiring loom for engine instruments, including warning light panel and starter switch, 12 / 24 VDC



Boat instruments

Dashboard instruments with black or white dials

All VETUS gauges are available in dual voltage (12/24VDC) except VETUS volt meters and come with two bezels: solid black and chrome effect synthetic.

Three reasons to choose VETUS boat instruments:

- High degree of accuracy which means that the functions of all systems on board can easily be monitored
- Reliability and longevity due to high quality gauges
- Smart illumination: excellent visibility in all circumstances due to backlit dials and dimmable LEDs. Yellow and red back lighting available

All VETUS instruments have double glazed faces to minimize condensation and subsequent water damage to internal components.

All VETUS instruments are available in black or white face and include round bezels: either in black or white synthetic and chrome finish synthetic.

Code suffix



B = black

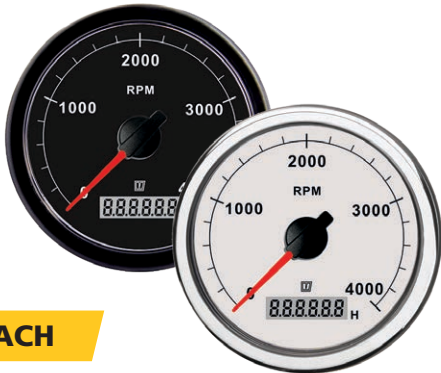


W = white

Tachometer (revolution counter)

Available in two versions: 0-4000 rpm and 0-5000 rpm and 12/24VDC including an incorporated digital hour counter. Overall diameter: 114 mm.

Type	Colour	Voltage (DC)	Cut-out size (Ø mm)	Overall diameter (mm)
TACHB4000	Black	12/24	100	114
TACHW4000	White	12/24	100	114
TACHB5000	Black	12/24	100	114
TACHW5000	White	12/24	100	114



TACH

Temperature gauge

Available in 63 mm diameter. Scale calibration: 40-120°C and 105-250°F. Temperature sensors are available as optional equipment. Suitable for both 12 VDC and 24 VDC.

Type	Colour	Voltage (DC)	Cut-out size (Ø mm)	Overall diameter (mm)
TEMPB	Black	12/24	52	63
TEMPW	White	12/24	52	63
TEMPSR220	Sender for temperature gauge, 12/24 VDC, single pole M14 x 1.5			
TEMPSR222	Sender for temperature gauge, 12/24 VDC, double pole M14 x 1.5			



TEMP

Voltmeter

Available in 63 mm diameter. Can be supplied for 12 or 24 VDC, with scale calibration respectively: 8 -16 VDC and 16 - 32 VDC.

Type	Colour	Voltage (DC)	Cut-out size (Ø mm)	Overall diameter (mm)
VLT12B	Black	12	52	63
VLT24B	Black	24	52	63
VLT12W	White	12	52	63
VLT24W	White	24	52	63



VLT



Dashboard instruments with black or white dials

Exhaust/gas temperature alarm

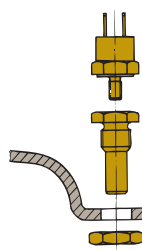
Available in 63 mm diameter. Designed for water injected exhaust systems. Provides a visual and an audible alarm when the temperature in the exhaust hose or waterlock exceeds an acceptable level.

A temperature sensor, to be fitted into the exhaust hose or the waterlock must be ordered separately. In case of a twin engine installation two sensors can be connected to one alarm unit if required. One sensor can be used two alarm units in case of a second steering position.

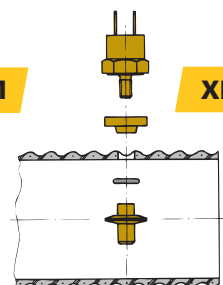
Type	Colour	Voltage (DC)	Cut-out size (Ø mm)	Overall diameter (mm)
XHI12B	Black	12	52	63
XHI24B	Black	24	52	63
XHSH	Sensor for exhaust temp. alarm to fit exhaust hose			
XHSM	Sensor for exhaust temperature alarm to fit muffler types MV/LSG			



XHI



XHSM



XHSH

Amp meter

Available in 63 mm diameter. Scale calibration: +/- 80 A or 150A. Suitable for both 12 VDC and 24 VDC. The AMP meter will be supplied including shunt.

Type	Colour	Voltage (DC)	Scale calibration	Cut-out size (Ø mm)	Overall diameter (mm)
AMP080B	Black	12/24	+/- 80A	52	63
AMP150B	Black	12/24	+/- 150A	52	63



AMP

Hour counter

Available in 63 mm diameter. Analogue engine hour counter which connects to the ignition switch. Suitable for both 12 VDC and 24 VDC.

Type	Colour	Voltage (DC)	Cut-out size (Ø mm)	Overall diameter (mm)
HOURECB	Black	12/24	52	63
HOURECW	White	12/24	52	63



HOUR



Trim gauge

Available in 63 mm diameter. For connection to the trim sensor of a stern drive or a set of trim tabs. Sensor resistance range: Trim down: 10 Ohm. Trim up: 180 Ohm. Suitable for both 12 VDC and 24 VDC.

Type	Colour	Voltage (DC)	Cut-out size (Ø mm)	Overall diameter (mm)
TRIMB	Black	12/24	52	63
TRIMW	White	12/24	52	63
TRIMWR	Connection cable			



TRIM



Boat instruments

Dashboard instruments with black or white dials

Black or grey waste water gauge

Available in 63 mm diameter. The waste water indicator can be provided with an interface (code EP412326). A warning light can be connected to this interface to indicate when the holding tank is almost full. Suitable for both 12 VDC and 24 VDC.

Type	Colour	Voltage (DC)	Cut-out size (Ø mm)	Overall diameter (mm)
WASTB	Black	12/24	52	63
WASTW	White	12/24	52	63



WAST

Oil pressure gauge

Available in 63 mm diameter. Scale calibration 0-8 kg/cm² and 0-110 p.s.i. Oil pressure sensors are available as optional equipment. Suitable for both 12 VDC and 24 VDC.

Type	Colour	Voltage (DC)	Cut-out size (Ø mm)	Overall diameter (mm)
OILB	Black	12/24	52	63
OILW	White	12/24	52	63
OILS	Oil pressure sender 12/24 VDC, single pole, M10 x 1K			
OILS2	Oil pressure sender 12/24 VDC, double pole, M10 x 1K			



OIL

Fuel gauge

Available in 63 mm diameter. Suitable for both 12 VDC and 24 VDC.

Type	Colour	Voltage (DC)	Cut-out size (Ø mm)	Overall diameter (mm)
FUELB	Black	12/24	52	63
FUELW	White	12/24	52	63



FUEL

Fresh water gauge

Available in 63 mm diameter. Suitable for both 12 VDC and 24 VDC.

Type	Colour	Voltage (DC)	Cut-out size (Ø mm)	Overall diameter (mm)
WATERB	Black	12/24	52	63
WATERW	White	12/24	52	63



WATER



Dashboard instruments with black or white dials

Rudder indicator

Available in 63 mm diameter. Suitable for both 12 VDC and 24 VDC.

Type	Colour	Voltage (DC)	Cut-out size (Ø mm)	Overall diameter (mm)
RUddb	Black	12/24	52	63
RUddw	White	12/24	52	63



RUDD

Rudder position sending unit

Type RUDDS is required for indicators 63 mm (RUddb, RUddw) and should be ordered separately.

Type	Description	Voltage (DC)
RUDDS	Rudder position sending unit	12/24



RUDDS

Rudder angle sensor

The rudder angle sensor measures the angle of the rudder.
Output: NMEA2000 signal.

Specifications

- ± 165 degrees measuring range
- 9-32V operating voltage
- <60 mA working current
- IP67 rating

Type	Description
CANNRUDDS	Rudder angle sensor



CANNRUDDS

NEW!

Rudder indicator

Available in 114 mm diameter. Suitable for both 12 VDC and 24 VDC.

Type	Colour	Voltage (DC)	Cut-out size (Ø mm)	Overall diameter (mm)
RUddb40	Black	12/24	100	114
RUddw40	White	12/24	100	114



RUDD.40

Heavy Duty position sending unit

Type RUDDSHD is required for 114 mm indicators (RUddb40, RUddw40) and should be ordered separately.

Type	Description	Voltage (DC)
RUDDSHD	Heavy Duty position sending unit	12/24



RUDDSHD



Boat instruments

Tank senders / sensors

Universal sender for fresh water, petrol/gasoline and diesel fuel

Universal tank sender for fresh water, petrol and diesel fuel (type SENSOR). Available in seven different lengths: 280, 320, 380, 480, 580, 680 or 780 mm. The VETUS universal tank sender indicates the difference in fluid level in steps of 2.5 cm. Just compare this with other systems which can only show three positions (full - about half full - empty).

Specifications

- Empty 300 Ω
- Full 10 Ω
- For 12 and 24 VDC

Each tube length consists of the maximum number of read contacts (electronic switches), instead of the bare minimum of three (full, half full, empty). As a result VETUS tank gauges display tank levels with maximum accuracy. The read contacts are sealed "fluid-tight".

Type	Length (mm)	Voltage (DC)
SENSOR280	280	12/24
SENSOR320	320	12/24
SENSOR380	380	12/24
SENSOR480	480	12/24
SENSOR580	580	12/24
SENSOR680	680	12/24
SENSOR780	780	12/24



SENSOR

Tank level sensor

The tank level sensor measures the tank level of petrol, gasoline, diesel and fresh water tanks. Output: NMEA2000 signal.

Specifications

- 9-16V operating voltage
- IP67 rating

Type	Description	Length (mm)
CANNFLS28	Tank level sensor	280
CANNFLS32	Tank level sensor	320
CANNFLS38	Tank level sensor	380
CANNFLS48	Tank level sensor	480
CANNFLS58	Tank level sensor	580
CANNFLS68	Tank level sensor	680
CANNFLS78	Tank level sensor	780

CANNFLS



NEW!

Waste water tank sensor type WWSENSORA

Easy measurement

Simple to fit, reliable waste water tank sensor. Adjustable arm length ranging from 200 to 412 mm.

Specifications

- Empty 300 Ω
- Full 0 Ω
- For 12 and 24 VDC

Type	Description	Voltage (DC)
WWSENSORA	Waste water sensor	12/24

WWSENSORA





Tank senders / sensors

Sender for fuel tanks

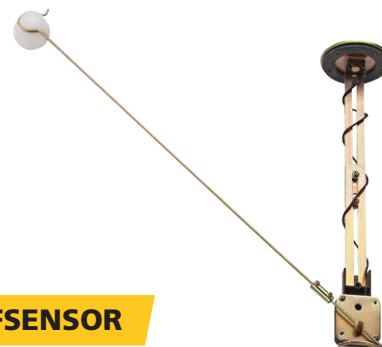
Sender for all rigid petrol and diesel fuel tanks suitable for heights between 140 to 660 mm. Both the vertical strip and the horizontal float arm are completely adjustable.

Specifications

- Empty 280 Ω
- Full 40 Ω
- For 12 and 24 VDC

Type	Description	Voltage (DC)
FSENSOR	Fuel tank float	12/24

FSENSOR



All VETUS level gauges are matched to our tank senders and can be connected directly to each other for accurate reading. To connect certain VDO level indicators to a VETUS tank sender, it is necessary to install a signal converter (code EP46849) in the circuit.

Ultrasonic level sensors

Accurate, contactless tank monitoring

The VETUS SENSORA and SENSORB are advanced ultrasonic level sensors designed to monitor tank contents without any moving parts or direct contact with the liquid. These sensors can be used in waste water (black and grey water), fresh water, diesel fuel, or petrol tanks of almost any shape and size - up to 120 cm deep. Max. tank capacity 5000 liter. Perfect for modern boats and yachts, they offer easy installation and high reliability. Once installed, the sensor can be calibrated on the spot using a built-in LED and wire. No extra tools are needed.

SENSORA

SENSORB



Specifications

SENSORA - Analogue output sensor

- Contactless ultrasonic measurement for high reliability
- Compatible with all VETUS analogue tank level gauges and WWCP panel
- Easy onboard calibration with LED and a calibration wire
- Ideal for black, grey, fresh water, petrol, and diesel fuel tanks
- Not suitable for use with metal tanks

Specifications

SENSORB - CAN bus sensor

- Uses RS485 bus interface (CAN bus type)
- Designed for integration with digital VETUS display SENSORD
- Contactless, reliable, and easy to calibrate
- Ideal for high-end digital installations
- Not suitable for use with metal tanks

By using an RS485 user interface, data can be transmitted over long distances without signal loss, there is a higher degree of noise immunity, and support for eight sensors connected to one SENSORD panel.

Feature	SENSORA	SENSORB
Output interface	Analogue	RS485 Bus (CAN bus)
Voltage	12 / 24 VDC	12 / 24 VDC
Current consumption	35 mA	35 mA
Max. tank depth	120 cm	120 cm
Accuracy	$\pm 5\%$	$\pm 5\%$
Temperature range	-20 °C to +70 °C	-20 °C to +70 °C
Mounting flange	SAE, 5-hole	SAE, 5-hole
Dimensions	$\varnothing 77$ mm x 23 mm	$\varnothing 77$ mm x 23 mm
Compatibility	Analogue gauges, WWCP panel	SENSORD digital display only
Suitable for	Water, fuel, black/grey water tanks	Water, fuel, black/grey water tanks
Not suitable for	Metal tanks	Metal tanks

Boat instruments

Tank senders / sensors

Waste water control panel type WWCP

Integrated tank level monitoring

This easy-to-use control panel with security lock can be used manually or automatically to control the full tank pump-out and manage the complete waste water system. The WWCP panel is connected to a VETUS level sensor (type WWSENSORA) and indicates the content level in the tank using LED's, it will ignore brief maximum level peaks caused by boat movements.

For detailed information see the Waste water section, page 191.

WWCP



Ultrasonic level system-bus version (RS485-bus) and graphic display

The VETUS ultrasonic level sensor, type SENSORB is contactless and will measure the fluid level in any shape and type of tank (except metal tanks), regardless of its dimensions, but with a maximum depth of 120 cm. It is suitable for use with: petrol, fresh water, black and grey waste water. After installing the SENSORB it can be calibrated very easily using the SENSORD graphic display. The graphic display instrument model SENSORD can be used to show the contents of up to four different tanks on one screen. A maximum of eight tanks can be monitored with this system.

Specifications

- Power supply: 8 - 32 VDC
- Current consumption Instrument: 125 mA at 12 VDC 63 mA at 24 VDC Including background lighting
- Current consumption sensor: 35mA
- Number of sensors: max. 8
- Number of display instruments: max. 2
- Max. current on alarm output: 200 mA
- Language selection: Dutch, English, German, French, Spanish and Italian
- Operating temperature: 0 to +50 °C
- Protection class: IP66

EMC-directive 89/336/EEC, 92/31/EEC and 93/68/EEC

SENSORD



The tank management system consists of a display instrument (SENSORD) and an ultrasonic level sensor (SENSORB) for each tank. The required number of sensors must be purchased separately.

Type	Description	Dimensions (mm)
SENSORD	Display for level indication via bus-system, max four tanks	110 x 110

Switch panels

Type P8FA

After mounting, the panel is splash proof from front face (IP 64). It has eight separate circuits, each provided with a switch, indicator LED and fuse holder and it is suitable for both 12 and 24 VDC circuits.

The eight fuse holders are located in a separate compartment, which can be opened at the front of the panel and either type of fuse may be fitted. Sixty self-adhesive name/symbol plates for different functions are supplied. There are also two covers supplied for the fuse compartment, depending on whether automatic fuses or conventional automotive (ATO) fuses are used. The panel is completely pre-wired and provided with a terminal rail, for connection of the power supply and equipment. The panel is made of synthetic and non-corrosive materials.

Specifications

- Dimensions: 99 x 161 mm
- Built-in depth: 45 mm

Type	Specifications	Voltage (DC)
FUSE06A4	Automatic fuse 6 Amps, for P8FA Set of four pcs.	12/24
FUSE08A4	Automatic fuse 8 Amps, for P8FA Set of four pcs.	12/24
FUSE10A4	Automatic fuse 10 Amps, for P8FA Set of four pcs.	12/24
FUSE15A4	Automatic fuse 15 Amps, for P8FA Set of four pcs.	12/24
P8FA	Switch panel, for eight blade fuses or automatic fuses (sixteen blade fuses supplied)	12/24

The following automotive (ATO) fuses are supplied as standard:
2 x 1A, 2 x 3A, 4 x 5A, 2 x 7.5A, 4 x 10A and 2 x 15A. Automatic fuses may be ordered as optional equipment (see price list).

P8FA



The panel can be used with conventional automotive (ATO) fuses or with automatic fuses.



Switch panels

Type P6

This panel features six on/off switches, six monitoring LED's and a choice of either six circuit breakers or fuses of 10A.

Specifications

- Dimensions: 94 x 156 mm
- Built-in depth: 50 mm

Available for 12 or 24 VDC circuits. Sixty self-adhesive name/symbol plates for different functions are supplied.

Type	Specifications	Voltage (DC)
P6F12	Switch panel type P6 with 6 fuses	12
P6F24	Switch panel type P6 with 6 fuses	24
P12F12	Switch panel type P12 with 12 fuses	12
P12F24	Switch panel type P12 with 12 fuses	24
P6CB12	Switch panel type P6 with 6 circuit breakers	12
P6CB24	Switch panel type P6 with 6 circuit breakers	24
P12CB12	Switch panel type P12 with 12 circuit breakers	12
P12CB24	Switch panel type P12 with 12 circuit breakers	24



P6CB12

P6CB24

Circuit breakers



P6F12

P6F24

Fuses

Type P12

This panel features twelve on/off switches, twelve monitoring LED's and a choice of either twelve circuit breakers or fuses of 10A.

Specifications

- Dimensions: 188 x 156 mm
- Built-in depth: 50 mm

Available for 12 or 24 VDC circuits. Sixty self-adhesive name/symbol plates for different functions are supplied.



P12F12

P12F24

Fuses



P12CB12

P12CB24

Circuit breakers

VETUS switch panels are supplied pre-wired. The only work required is to connect the positive and negative power supply of the various equipment (lights, pumps etc.). These panels are made of synthetic and non-corrosive materials, but are not waterproof.

Detectors



Gas detector GD1000 panel and sensor

The VETUS gas detector model GD1000 offers a gas detection system for a range of combustible gases including propane, butane, methane and hydrogen. In addition it will also detect poisonous carbon monoxide.

A single sensor is supplied as standard, which can detect both flammable gases (such as bottled gas) and carbon monoxide. A second sensor can be fitted as an option, for gas detection in an alternative location.

In case a cooking gas supply valve is installed, it can be actuated by a push button on the gas detector panel. If this solenoid valve is in the open position (or not fitted), the presence of gas is detected continuously. If the valve is closed, detection will take place intermittently.

An electronically operated gas valve which is incorporated in the gas supply line, can be connected to the output 'valve' on de the GD1000. Max. allowable current is 1 A. The valve is not supplied with the GD1000.

GD1000 and PD1000

Specifications

- Voltage: 12 or 24 VDC
- Maximum relay contact ratings for extractor fan, gas solenoid valve and external alarm: 1 A for each function
- Control panel dimensions: 85 x 85 mm
- Built-in depth: 40 mm
- Sensor: 35 x 26 x 62 mm high

Type	Specifications	Voltage (DC)
GD1000	Gas & carbon monoxide detector, incl. sensor	12/24
GSENSOR	Additional sensor for gas & carbon monoxide detector type GD1000	12/24



Gas detector PD1000 panel and sensor

Gas detector model PD1000 specifically detects petrol vapour to prevent the risk of explosion in the engine room, as well as poisonous carbon monoxide (CO).

This gas detector can be supplied with one or two sensors. Both detection functions are carried out simultaneously. All other functions are as described for model GD1000 shown above.

Gas detector PD1000 is suitable for both 12 and 24 VDC supply and its dimensions are identical to model GD1000.

Type	Specifications	Voltage (DC)
PD1000	Petrol vapour & carbon monoxide detector, incl. sensor	12/24
PSENSOR	Extra sensor for petrol vapour detection	12/24

It is recommended that the possible presence of petrol vapour and carbon monoxide be checked on a permanent basis; even when the boat is not in use! Therefore, always keep the power supply to this gas detector switched on.